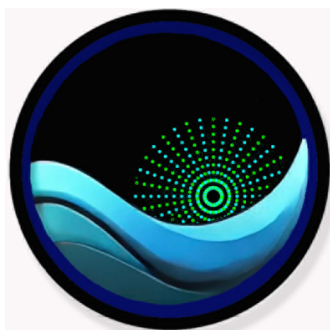
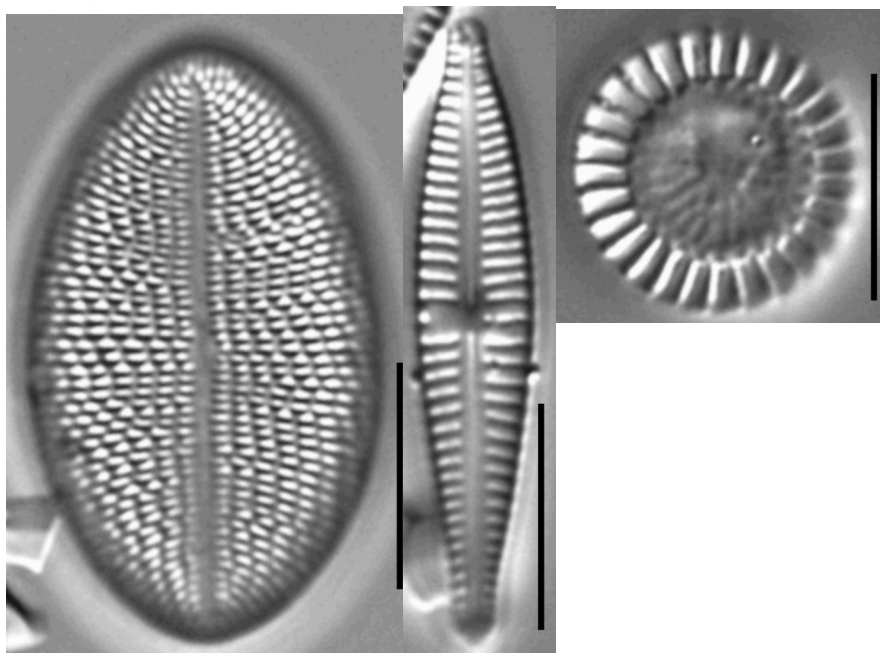


National Ecological Observatory Network Pilot Diatom Voucher Flora-Ver.1.0 July 2025



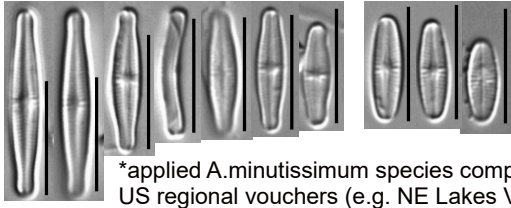
neon
Operated by Battelle



RHITHRON

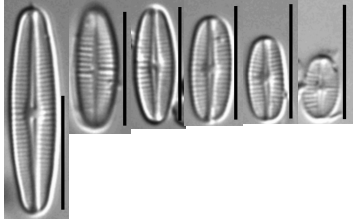
Missoula, Montana

Achnanthydium
minutissimum



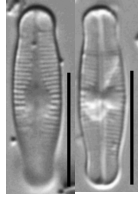
*applied A.minutissimum species complex similar to US regional vouchers (e.g. NE Lakes V3 2021)

Achnanthydium
rivulare



*DONA

Achnanthydium
reimeri



*DONA

Adlafia
minuscula



*Cantonati 2017
Plate43 Figs70-74

Amphipleura
pellucida



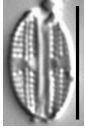
*DONA

Amphora
copulata



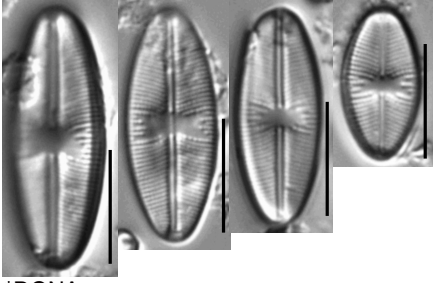
*DONA

Amphora
pediculus



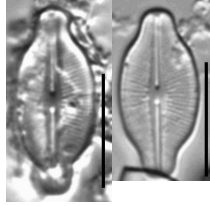
*DONA

Cavinula
variostrata

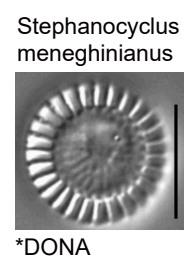
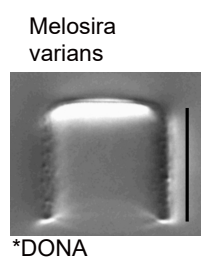
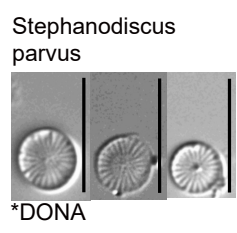
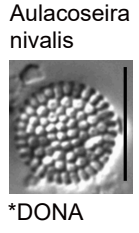
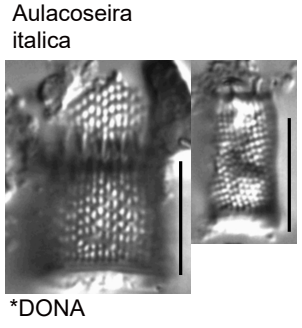
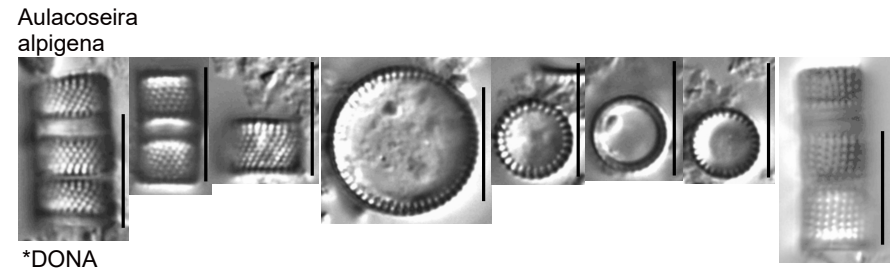
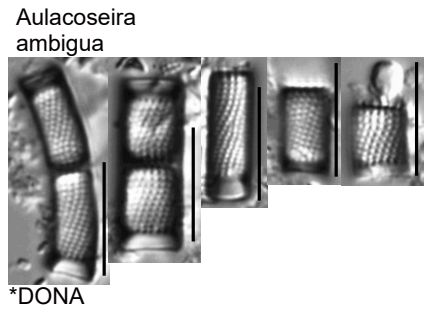


*DONA

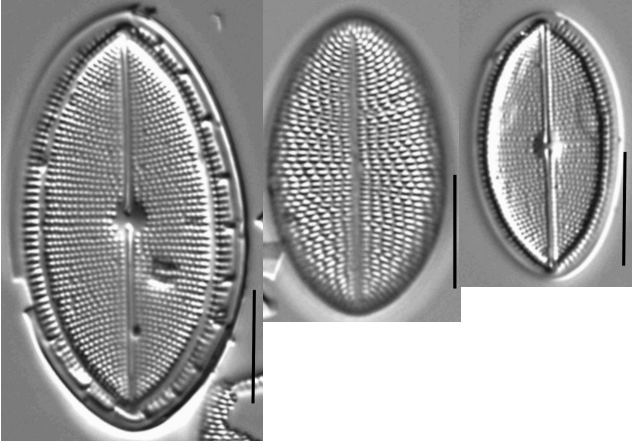
Cavinula
pusio



*DONA

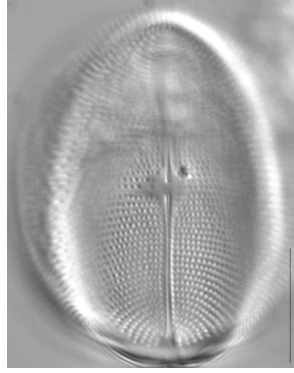


Cocconeis
placentula sensu lato



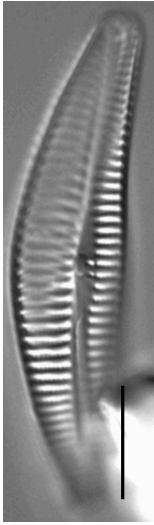
*DONA

Cocconeis
pediculus



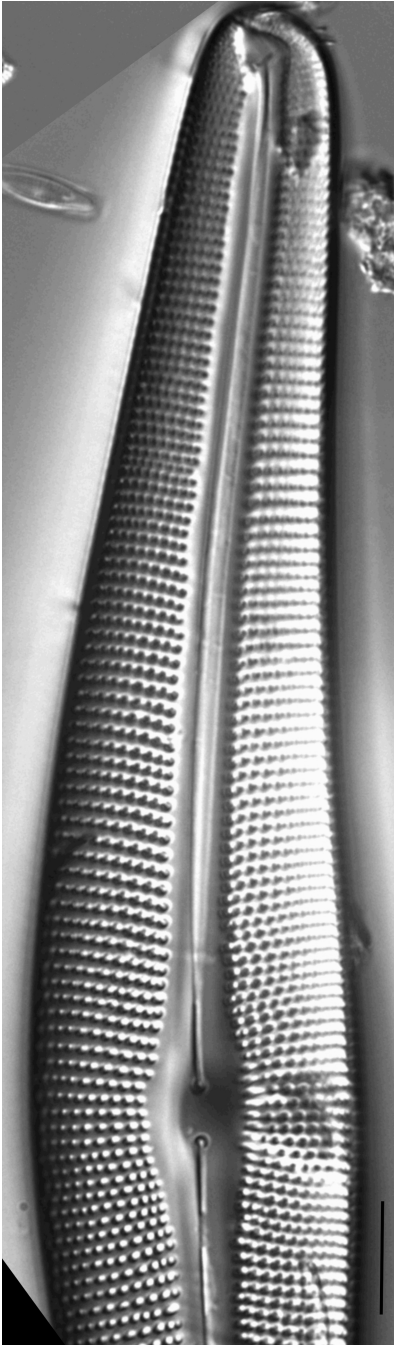
*DONA

Cymbella
blinnii

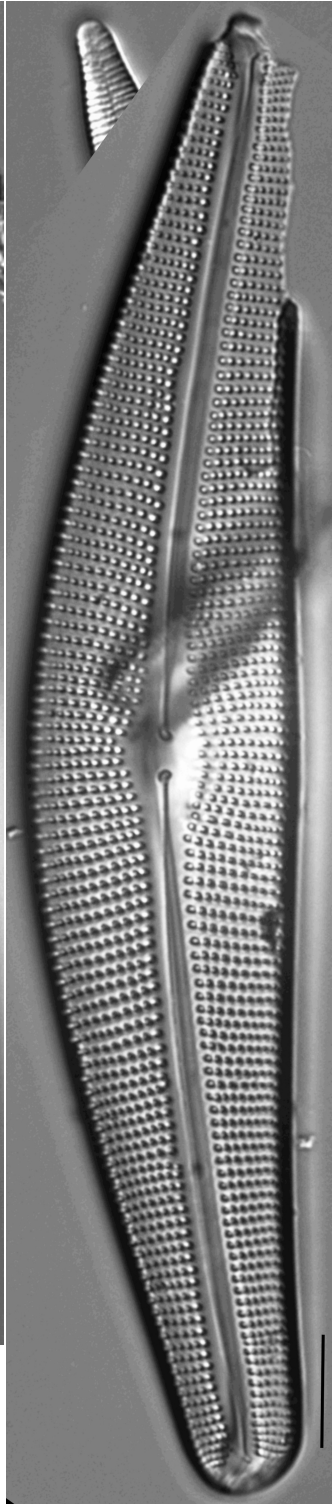


*DONA

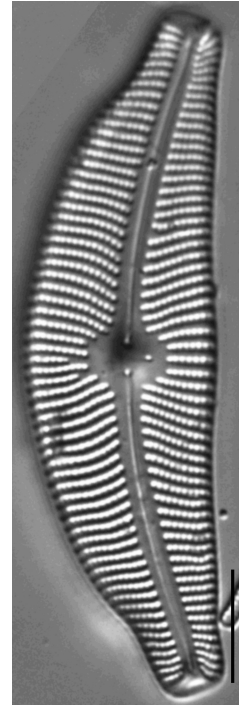
Cymbella
lanceolata



*DONA

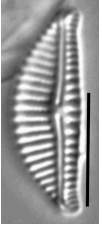


Cymbella
tumida



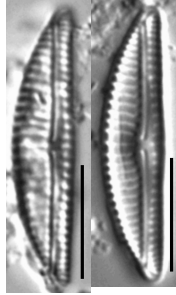
*DONA

Encyonema
ventricosum



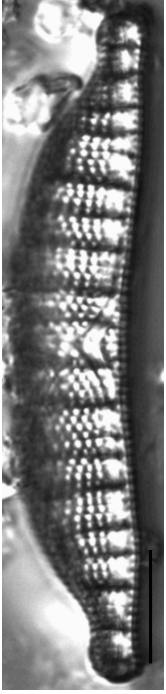
*Bahls 2021 DOM V1
Plate176 Figs30-35

Encyonema
minutiforme



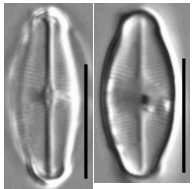
*Bahls 2021 DOM V1
Plate175 Figs28-34

Epithemia
adnata



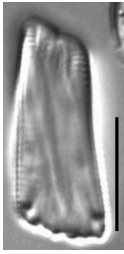
*DONA

Eucoconeis
laevis



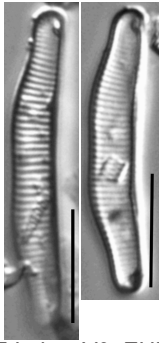
*DONA

Eunotia rhomboidea



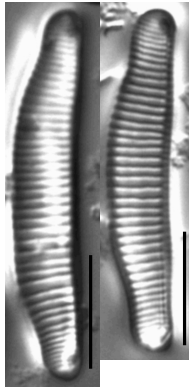
*DONA

Eunotia implicata



*NE Lakes V3_EUN38

Eunotia minor



*NE Lakes V3_EUN80

Eunotia incisa



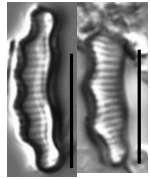
*DONA

Eunotia botuliformis



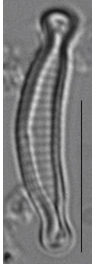
*NE Lakes V3_EUN16

Eunotia perpusilla



*DONA

Eunotia microcephala



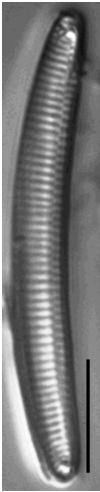
*DONA

Eunotia valida



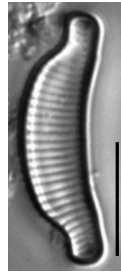
*NE Lakes V3_EUN69

Eunotia bilunaris



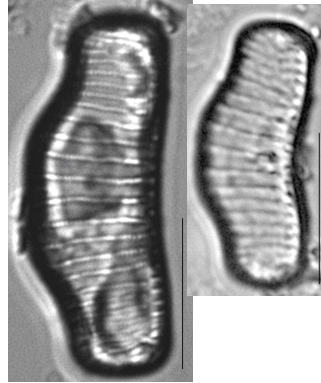
*DONA

Eunotia ursamaioris



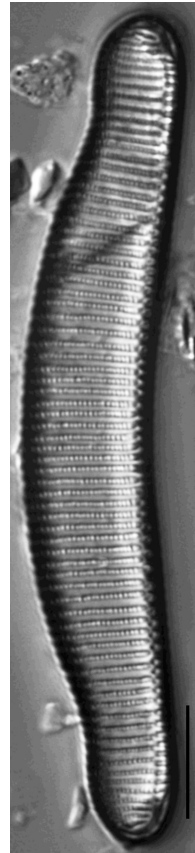
*Lange-Bertalot 2011
DOE V6 Plate152 Figs1-49

Eunotia curtagrunowii



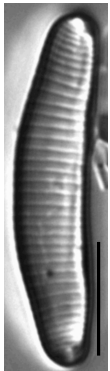
Lange-Bertalot etal 2011
Plate 195 Figs 1-29

Eunotia metamonodon



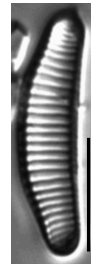
*DONA

Eunotia



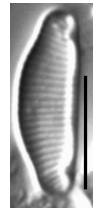
**Eunotia* sp. 5 NE Lakes?
NE Lakes V3_EUN35

Eunotia



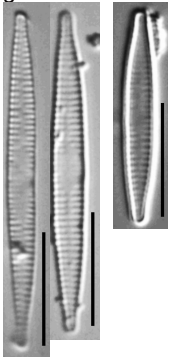
**Eunotia* sp. 6 NE Lakes?
NE Lakes V3_EUN404

Eunotia



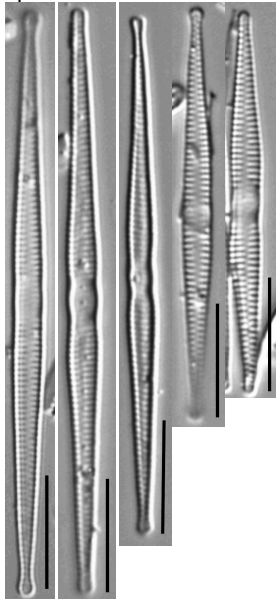
**Eunotia* sp. 11 NE Lakes?
NE Lakes V3_EUN81

Fragilaria gracilis



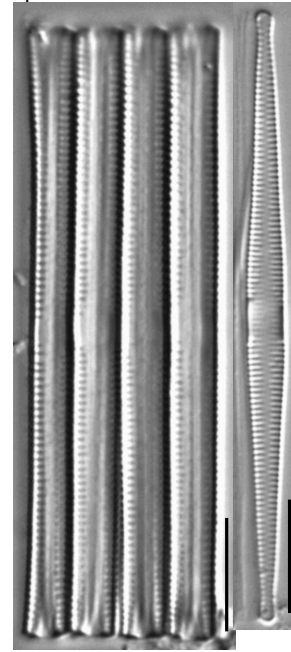
*Cantonati 2017
Plate10 Figs21-26

Fragilaria
sp1



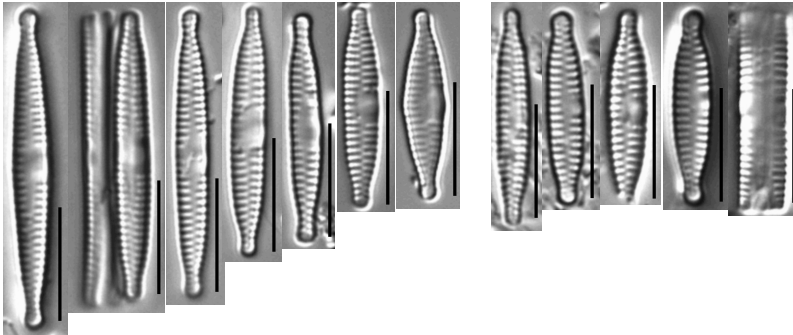
*see Van de Vijver et al 2022 Figs118-154 as
Synedra vaucheriae Kützing sensu Brébisson
**occur in frustule pairs in girdle, never chains

Fragilaria
sp2



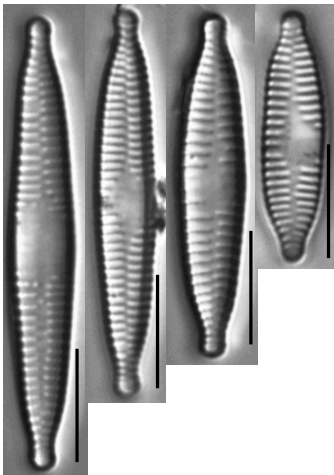
*see Van de Vijver et al 2022 Figs36-54 as
Synedra rumpens var *familiaris* Kützing sensu Van Heurck
**occur often in frustule chains in girdle

Fragilaria
pectinalis



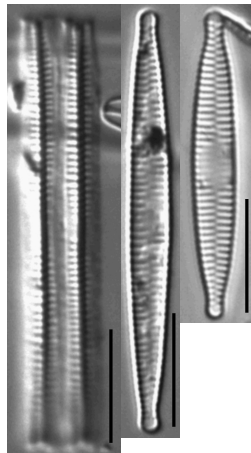
*Wetzel and Ector 2015
Figs 61-89

Fragilaria
vaucheriae



*Wetzel and Ector 2015
Figs2-38

Fragilaria
sp3



*chain forming?

Fragilariforma
virescens



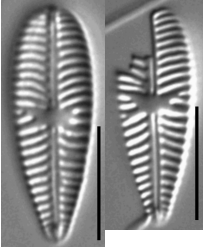
*DONA

Frustulia
vulgaris



*DONA

Gomphonella
olivacea



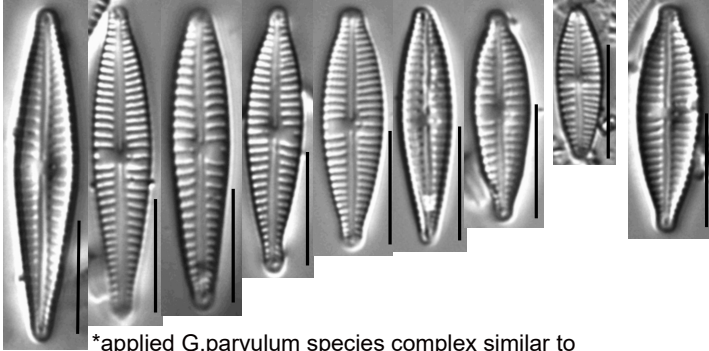
*DONA

Gomphonema
lagenula



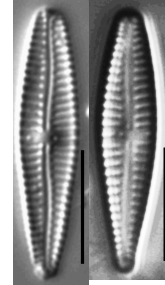
*DONA

Gomphonema
parvulum



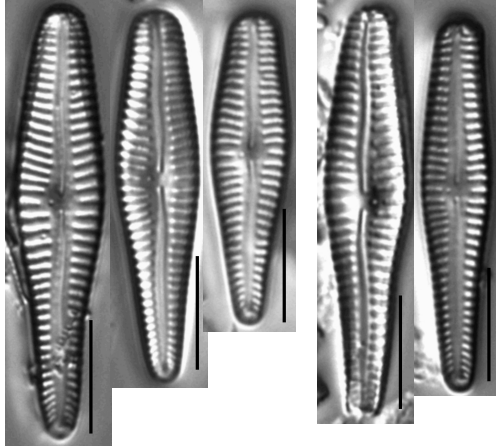
*applied G.parvulum species complex similar to US regional vouchers (e.g. USGS SESQA 2014)

Gomphonema
angustatum



*Bahls 2023
DOM V2 Plate77 Figs1-35

Gomphonema
subclavatum



*Bahls 2023
DOM V2 Plate70 Figs16-25

Gomphonema



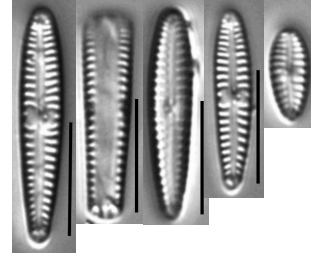
*G.subclavatum?

Gomphonema



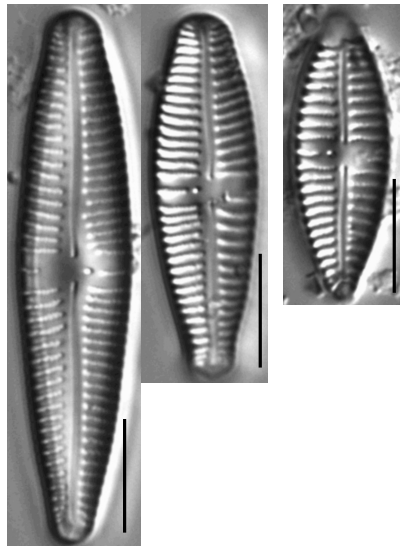
*G.sp42 SESQA in
NE Lakes V3_GOM14?

Gomphonema
kobayasii



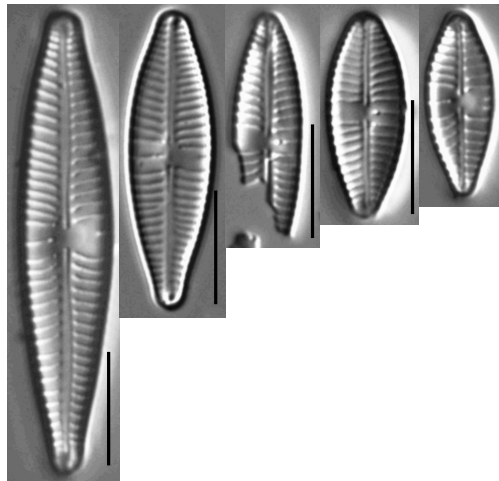
*applied G.kobayasii species complex similar to US regional vouchers (e.g. USGS PNSQA 2015)

Gomphonema
micropus



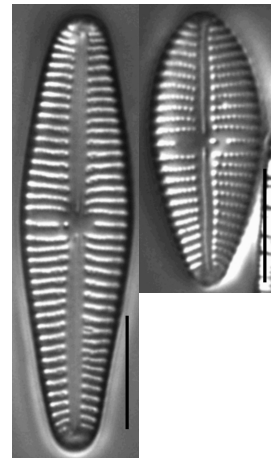
*NE Lakes V3_GOM11

Gomphonema
sp1

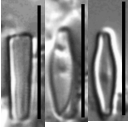


*see Bahls 2023 DOM V3 Plate60 Figs 27-32
as G.longilineare
**see NE Lakes V3 GOM501 as G.amoenum
***see Andrejic 2019 Figs 54-81 as G.sp2 and
Figs 82-115 as G.micropus

Gomphonema
sp2

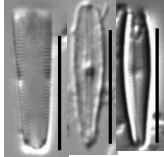


Gomphosphenia
praegnans



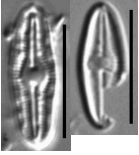
*Ress 2016
Figs27-42

Gomphosphenia
americana



*Ress 2016
Figs45-51

Humidophila
perpusilla



*DONA

Humidophila
simplex

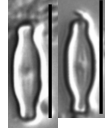


*Van de Vijver 2022
Figs 54-81

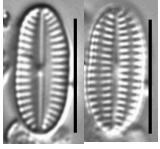
Humidophila
sp1



Humidophila
sp2

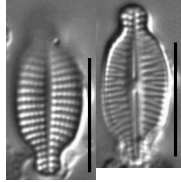


Karayevia
suchlandtii



*DONA

Karayevia
laterostrata

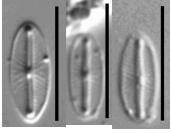


*DONA

Luticola
sp1

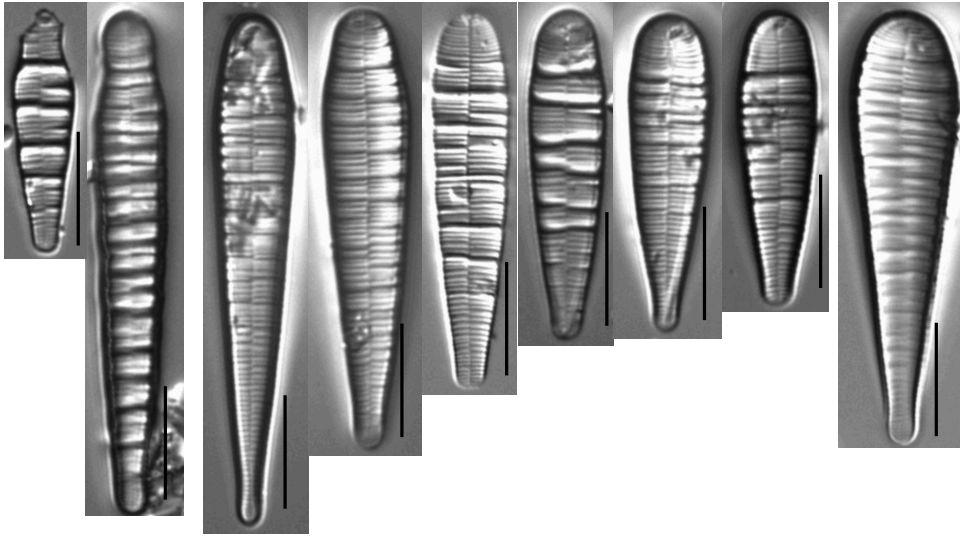


Mayamaea
permitis



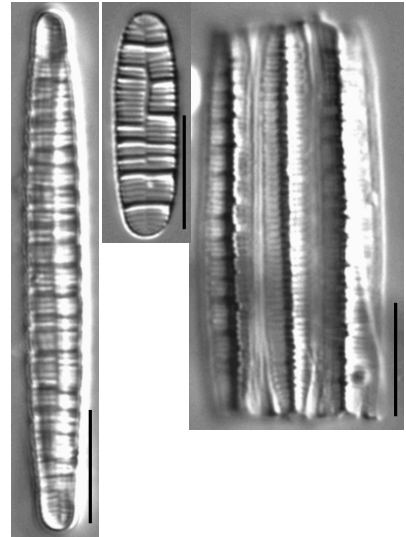
*Cantonati 2017
Plate50 Figs13-19

Meridion
circulare v. constrictum



*DONA
**Variable morphology (headpole) in KS population

Meridion
lineare



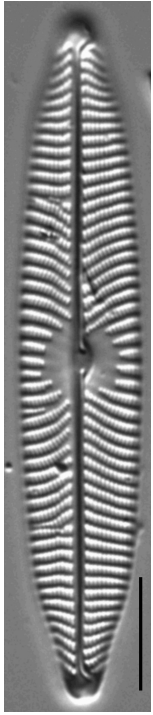
*Bahls 2021 DOM V1
Plate25 Figs1-34

Meridion
anceps



*DONA

Navicula viridulacalcis subsp. *neomundana*



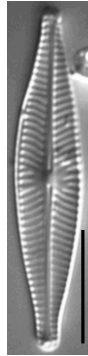
*DONA

Navicula sp1



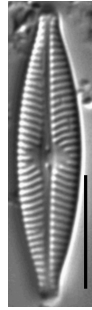
*N.lundii?

Navicula cryptocephala



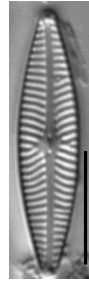
*DONA

Navicula aitchelbee



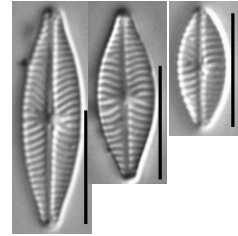
*DONA

Navicula sp2



**Navicula* sp297101?
Bahls 2021 DOM V1
Plate 102 Figs 36-39

Navicula metareichardtiana



*DONA

Navicula veneta



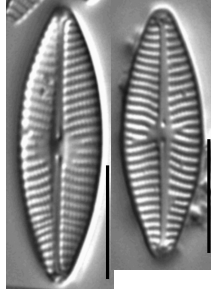
*DONA

Navicula tripunctata



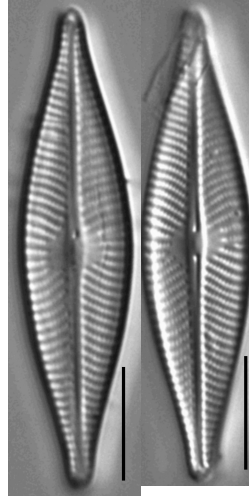
*DONA

Navicula antonii



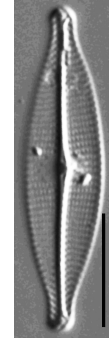
*DONA

Navicula trivialis



*DONA

Navicula gregaria



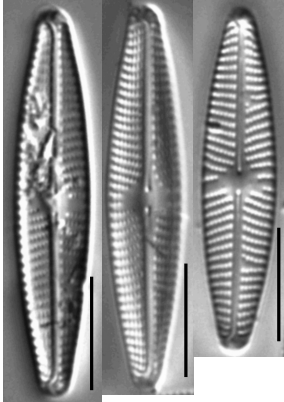
*DONA

Navicula capitatoradiata



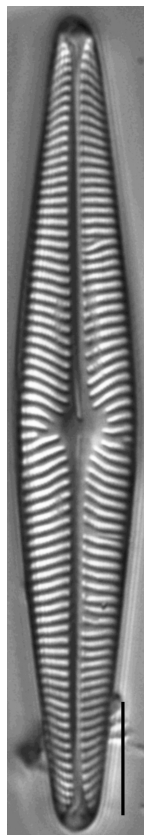
*DONA

Navicula libonensis



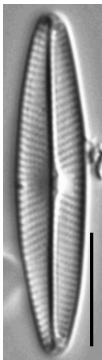
*DONA

Navicula radiosa



*DONA

Navicula symmetrica

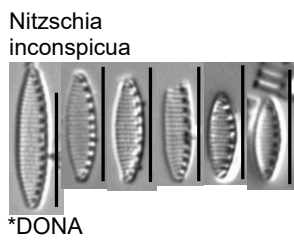


*DONA

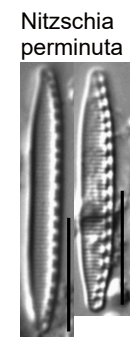
Neidium
alpinum v. quadripunctatum



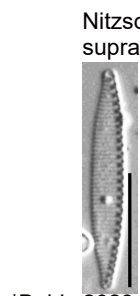
*NE Lakes V3_NED01



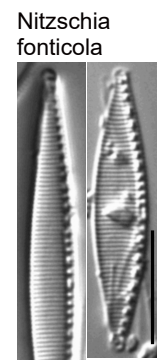
*DONA



*Bahls 2023 DOM V2 Plate231 Figs1-11



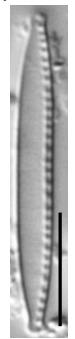
*Bahls 2023 DOM V2 Plate250 Figs20-24



*DONA

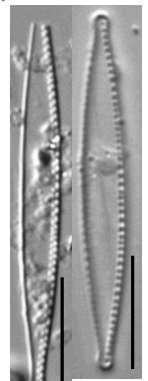


Nitzschia palea v. debilis



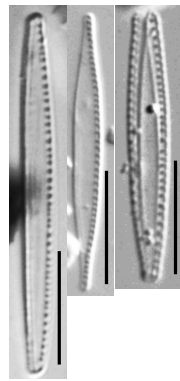
*DONA

Nitzschia palea v. tenuirostris



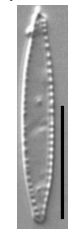
*DONA

Nitzschia archibaldii



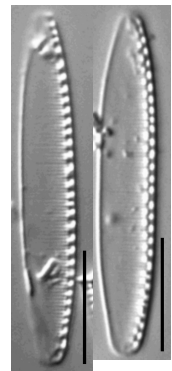
*Bahls 2023 DOM V2 Plate243 Fig1-4

Nitzschia paleacea



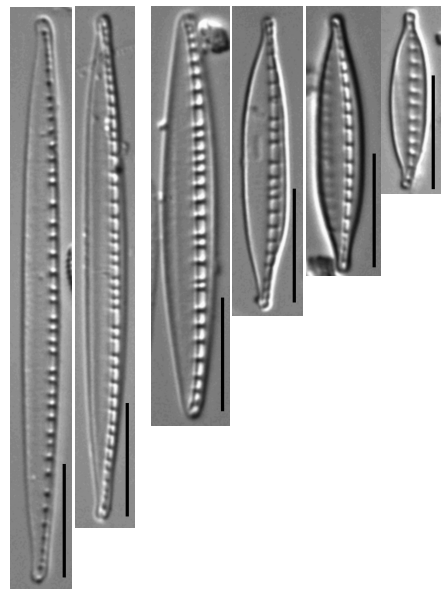
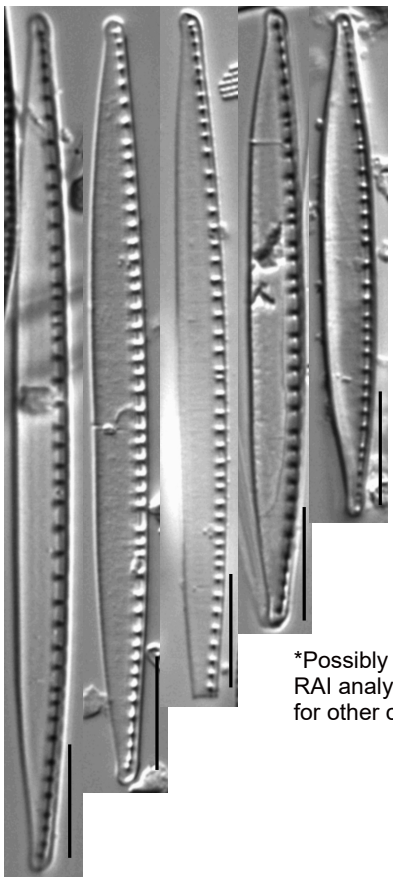
*DONA

Nitzschia communis



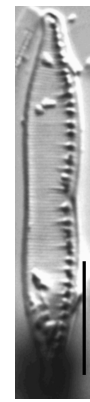
*DONA

Nitzschia dissipata



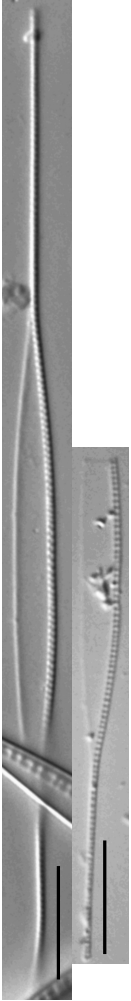
*Possibly split into 3 morpho-species, however RAI analysts have found issues with consistency for other clients/projects when splitting these

Nitzschia hamburgiensis



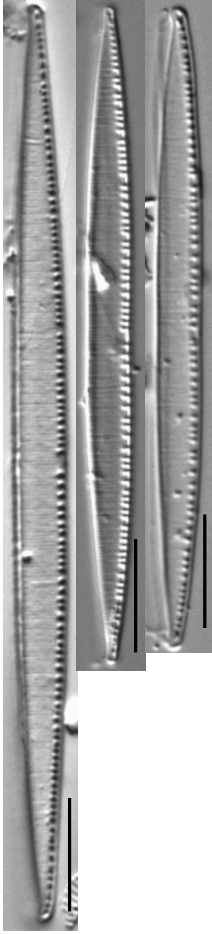
NE Lakes V3_NIT04

Nitzschia acicularis



*DONA

Nitzschia subtilis

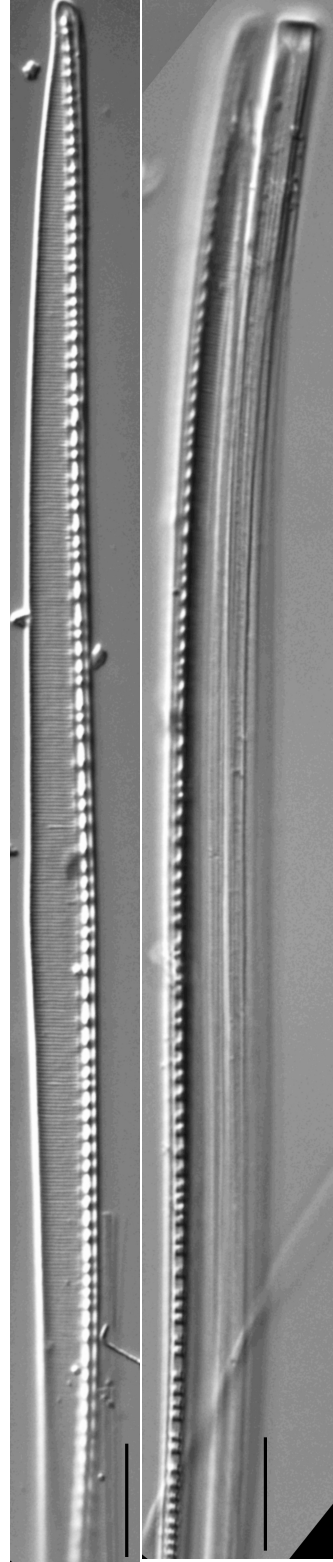


*Bahls 2023 DOM V2
Plate243 Figs22-23

Nitzschia sp2

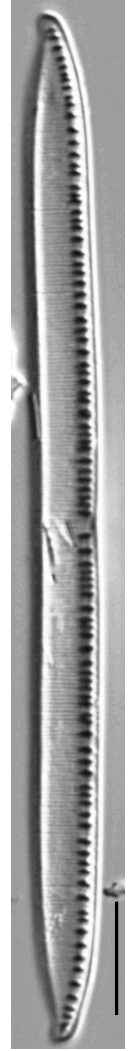


Nitzschia wuellerstorffii



*Cantonati 2017
Plate116 Figs1-4

Nitzschia linearis



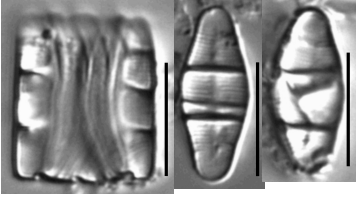
*DONA

Nupela
subrostrata



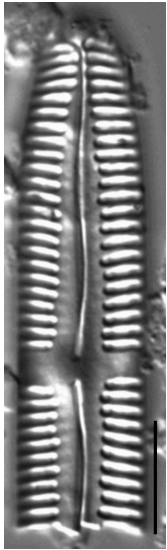
*DONA

Odontidium
mesodon



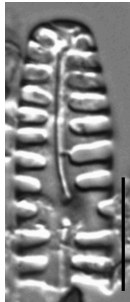
*DONA

Pinnularia
inconstans



*Bahls 2023 DOM V2
Plate188 Figs6-11

Pinnularia
borealis



*Bahls 2023 DOM V2
Plate161 Figs7-12

Pinnularia
marchica



*Bahls 2023 DOM V2
Plate163 Figs29-32

Pinnularia
sinistra

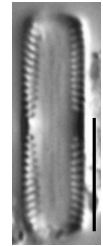


*Bahls 2023 DOM V2
Plate163 Figs41-47

Pinnularia
sp1



Pinnularia



Planothidium
sp1

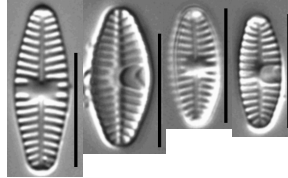


Planothidium
lanceolatum



*DONA

Planothidium
frequentissimum



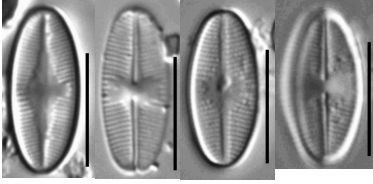
*DONA

Platessa
oblongella



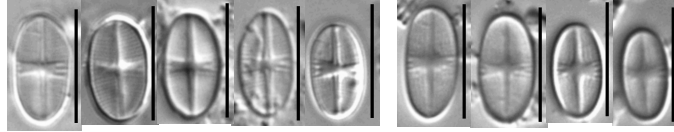
*DONA

Psammothidium
daonense



*DONA

Psammothidium
subatomoides



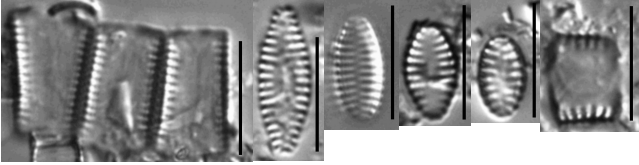
*DONA

Psammothidium
bioretii



*DONA

Stausira
construens v. venter

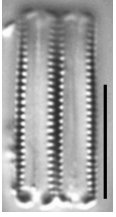


*DONA

Stausira
sp1



Pseudostaurosira



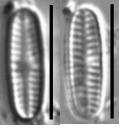
Reimeria

uniseriata



*DONA

Rossithidium
nodosum



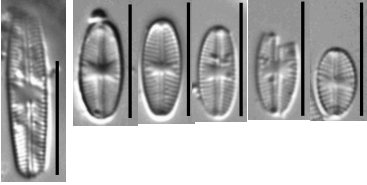
*DONA

Sellaphora
difficillima



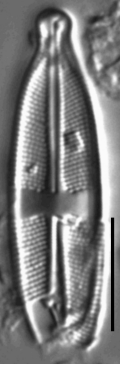
*KLB 1986 2/1
Plate80 Figs7-8

Sellaphora
atomoides



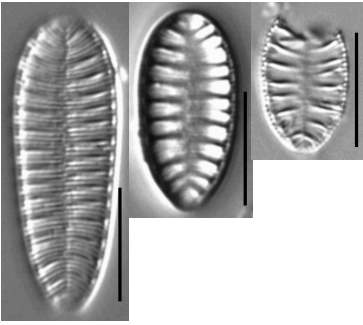
*DONA

Stauroneis
pseudagrestis



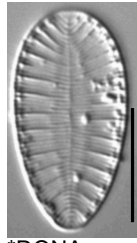
*DONA

Suirella
pinnata



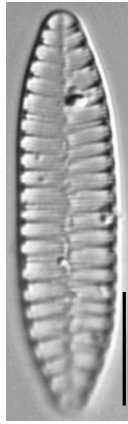
*DONA

Suirella
lacrimula



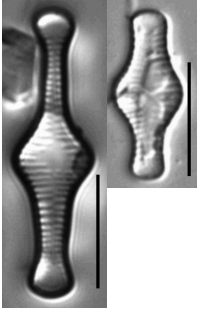
*DONA

Suirella
angusta



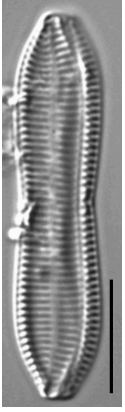
*DONA

Tabellaria
focculosa



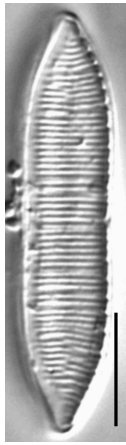
*DONA

Tryblionella
apiculata



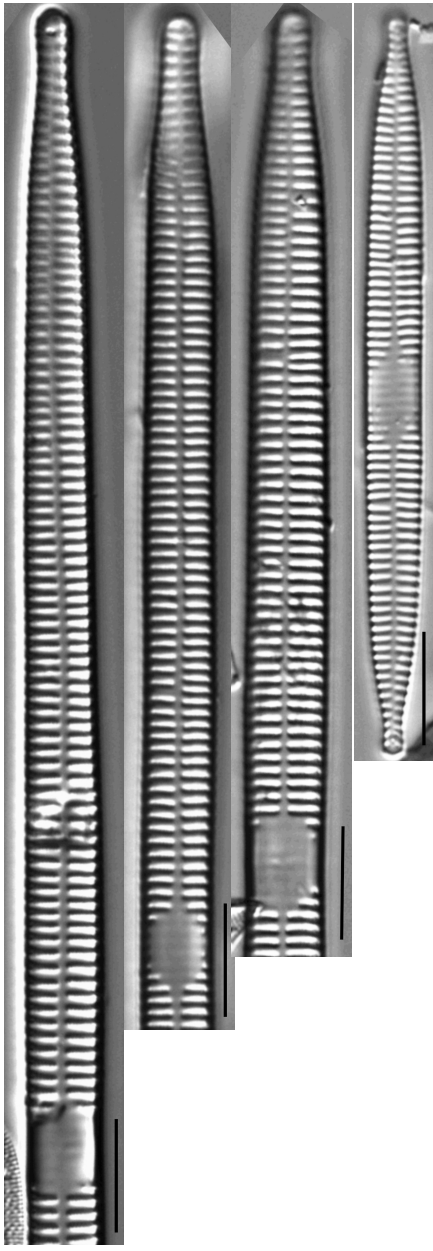
*DONA

Tryblionella
calida

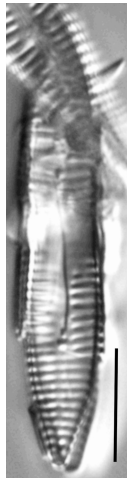


*DONA

Ulnaria
sp1

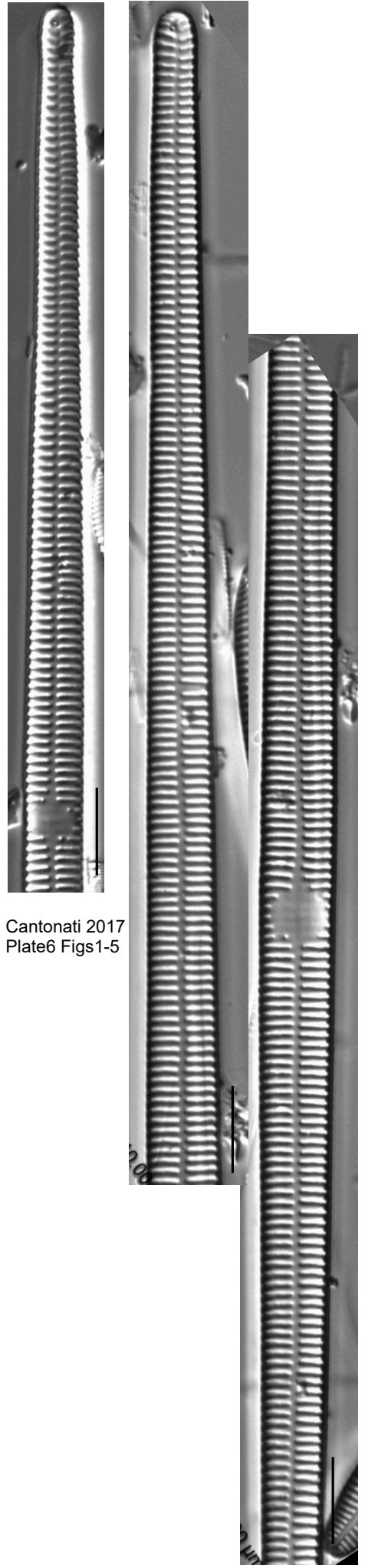


Ulnaria



*U.contracta?

Ulnaria
ulna



Cantonati 2017
Plate6 Figs1-5