

<i>Title:</i> NEON Sensor Command, Control, and Configuration: Single Aspirated Air Temperature		<i>Date:</i> 01/07/2014
<i>NEON Doc. #:</i> NEON.DOC.000302	<i>Author:</i> D. Smith	<i>Revision:</i> B

NEON SENSOR COMMAND, CONTROL, AND CONFIGURATION: SINGLE ASPIRATED AIR TEMPERATURE

PREPARED BY	ORGANIZATION	DATE
Derek Smith	FIU	01/07/2014
Ed Ayers	FIU	05/09/2012
Hank Loescher	FIU	05/09/2012

APPROVALS	ORGANIZATION	APPROVAL DATE
David Tazik	CCB PROJ SCI	12/09/2013
Hanne Buur	CCB DIR SE	12/06/2013

RELEASED BY	ORGANIZATION	RELEASE DATE
Stephen Craft	SE	01/07/2014

See configuration management system for approval history.

© 2014 NEON Inc. All rights reserved.

<i>Title:</i> NEON Sensor Command, Control, and Configuration: Single Aspirated Air Temperature		<i>Date:</i> 01/07/2014
<i>NEON Doc. #:</i> NEON.DOC.000302	<i>Author:</i> D. Smith	<i>Revision:</i> B

Change Record

REVISION	DATE	ECO #	DESCRIPTION OF CHANGE
A	05/16/2012	ECO-00402	Initial release
B	01/07/2014	ECO-00592	Updated turbine references and DP IDs. Made changes to present information more clearly.

Title: NEON Sensor Command, Control, and Configuration: Single Aspirated Air Temperature		Date: 01/07/2014
NEON Doc. #: NEON.DOC.000302	Author: D. Smith	Revision: B

TABLE OF CONTENTS

1 DESCRIPTION.....1

1.1 Purpose 1

1.2 Scope..... 1

2 RELATED DOCUMENTS AND ACRONYMS1

2.1 Applicable Documents 1

2.2 Reference Documents..... 1

2.3 Acronyms 2

3 INTRODUCTION2

4 OVERVIEW OF SENSOR CONFIGURATION3

4.1 Temperature sensor..... 3

4.2 Aspirated Shield 3

4.3 Heater 3

5 COMMAND AND CONTROL3

5.1 Heater control..... 3

APPENDIX A RATIONALE FOR HEATING TIME.....5

LIST OF TABLES AND FIGURES

Table 1. SAAT sensor-related LO DPs and other ancillary DPs associated with this document..... 2

Table 2. Aspirated shield fan configuration settings 3

Table 3. Aspirated shield turbine configuration settings 3

Figure 1. Command and control for turning the heater on as well as generating a flow rate flag in the event of a sensor malfunction 4

Title: NEON Sensor Command, Control, and Configuration: Single Aspirated Air Temperature		Date: 01/07/2014
NEON Doc. #: NEON.DOC.000302	Author: D. Smith	Revision: B

1 DESCRIPTION

1.1 Purpose

This document specifies the command, control, and configuration details for operating the Single Aspirated Air Temperature (SAAT) assembly and sensor. It includes a detailed discussion of all necessary requirements for operational control parameters, conditions/constraints, set points, and any necessary error handling. All Level 0 Data Products generated by the sensor are identified.

1.2 Scope

This document specifies the command, control, and configuration that is needed for operating the SAAT assembly. It does not provide implementation details, except for cases where these stem directly from the sensor conditions as described here. This document assumes that air temperature will be measured using a Thermometrics Climate PRT Probe (NEON P/N: 0303550001, 0303550002, or 0303550003 depending on required cable length) (AD[02]) and a Met One Instruments 62789 Aspirated Radiation Shield (NEON P/N 0329810000).

2 RELATED DOCUMENTS AND ACRONYMS

2.1 Applicable Documents

Applicable documents contain information that shall be applied in the current document. Examples are higher level requirements documents, standards, rules and regulations.

AD [01]	NEON.DOC.000001	NEON Observatory Design
AD [02]	NEON.DOC.000291	NEON Configured Sensor List
AD [03]	NEON.DOC.005003	NEON Scientific Data Products Catalog
AD [04]	NEON.DOC.005005	NEON Level 0 Data Products Catalog
AD [05]	NEON.DOC.000646	ATBD Single Aspirated Air Temperature
AD [06]	NEON.DOC.000780	ATBD 2D Wind Speed and Direction

2.2 Reference Documents

Reference documents contain information complementing, explaining, detailing, or otherwise supporting the information included in the current document.

RD [01]	NEON.DOC.000008	NEON Acronym List
RD [02]	NEON.DOC.000243	NEON Glossary of Terms

Title: NEON Sensor Command, Control, and Configuration: Single Aspirated Air Temperature		Date: 01/07/2014
NEON Doc. #: NEON.DOC.000302	Author: D. Smith	Revision: B

2.3 Acronyms

Acronym	Explanation
ATBD	Algorithm Theoretical Basis Document
C ³	Command, Control, and Configuration Document
SOP	Standard Operating Procedures
QA/QC	Quality Assurance/Quality Control
TIS	Terrestrial Instrument System
L0	Level 0
L1	Level 1
ENG	NEON Engineering group
CI	NEON Cyberinfrastructure group
DPS	NEON Data Products group
CVAL	NEON Calibration, Validation, and Audit Laboratory

3 INTRODUCTION

The sensor configuration and sensor command and control described here are related to the SAAT data product. A description of how sensor readings shall be converted to air temperature is presented in the associated ATBD (AD[05]). The TIS assembly to generate this data product consists of 4 components: a temperature sensor, i.e., a Platinum Resistance Thermometer (PRT), aspirated shield comprised of one fan and one turbine, and a heater. Configuration settings and the command and control structure are described separately for each component.

Table 1. SAAT sensor-related L0 DPs and other ancillary DPs associated with this document

Data product	Sample Frequency	Units	Data stream ID
PRT resistance at temperature T (R_T)	1 Hz	Ω	NEON.DXX.XXX.DP0.00002.001.001.001.XXX.001
Fan Speed	1 Hz	RPM	NEON.DXX.XXX.DP0.00002.001.002.001.XXX.001
Turbine Speed (S_T)	1 Hz	RPM	NEON.DXX.XXX.DP0.00002.001.003.001.XXX.001
Heater Status (H)	State Change	Binary	NEON.DXX.XXX.DP0.00002.001.004.001.XXX.001
2D Sonic Anemometer U component (U)	1 Hz	m s^{-1}	NEON.DXX.XXX.DP0.00001.001.001.001.XXX.001
2D Sonic Anemometer V component (V)	1 Hz	m s^{-1}	NEON.DXX.XXX.DP0.00001.001.002.001.XXX.001

Title: NEON Sensor Command, Control, and Configuration: Single Aspirated Air Temperature		Date: 01/07/2014
NEON Doc. #: NEON.DOC.000302	Author: D. Smith	Revision: B

4 OVERVIEW OF SENSOR CONFIGURATION

4.1 Temperature sensor

The temperature sensor does not require any configuration.

4.2 Aspirated Shield

The current assembly design includes one fan and one turbine that are housed within the aspirated shield. The fan ensures that the temperature sensor is adequately aspirated. The turbine is used to monitor the flow rate within the aspirated shield and ensure that sufficient aspiration is present. Sensor configuration settings are shown in the tables below.

Table 2. Aspirated shield fan configuration settings

Parameter	Default Setting
Aspirator fan	On
Acquisition rate: Fan speed	1 Hz
Raw data	Fan speed (NEON.DXX.XXX.DP0.00002.001.002.001.XXX.001)

Table 3. Aspirated shield turbine configuration settings

Parameter	Default Setting
Turbine	Off
Acquisition rate: Turbine speed (RPM)	1 Hz
Raw data	Turbine speed (NEON.DXX.XXX.DP0.00002.001.003.001.XXX.001)

4.3 Heater

The heater (NEON.DXX.XXX.DP0.00002.001.004.001.XXX.001) does not require any configuration.

5 COMMAND AND CONTROL

5.1 Heater control

The heater shall be used to melt ice that is restricting the flow of air through the aspirated shield. Figure 1 represents the logic for cycling the heater on and off as well as assessing whether or not the assembly is functioning properly and sufficient aspiration is present. If sufficient aspiration is not present a flow quality flag will be set high (i.e., QF_F = 1) and the problem tracking and reporting system will issue a trouble ticket, as specified in Figure 1. Z represents the time period that the heater shall be switched on during a single heating event. Based on the assumptions in Appendix A, z = 448 seconds. If the design differs from these assumptions, a new value for z shall be calculated.

Additional inputs include: 1) the heater status, 2) turbine speed, 3) temperature sensor output for the current timestamp, which is used to determine whether freezing conditions are present, and 4) the 2D wind speed measurement from the corresponding tower level, which is needed to account for bias in the turbine measurement when wind speeds are > 12 m/s. The real-time horizontal wind speed is required for heater control, as shown in Figure 1. Horizontal wind speed will be determined from data products NEON.DXX.XXX.DP0.00001.001.001.001.XXX.001 and NEON.DXX.XXX.DP0.00001.001.002.001.XXX.001 according to Eq. (3) in AD[06]. Likewise, real-time temperature from the corresponding PRT is needed to control the heater on the SAAT sensor. The 1 Hz PRT observations, i.e., NEON.DXX.XXX.DP0.00002.001.001.001.XXX.001, will need to be converted to temperature as shown in Eq. (1) in AD[05].

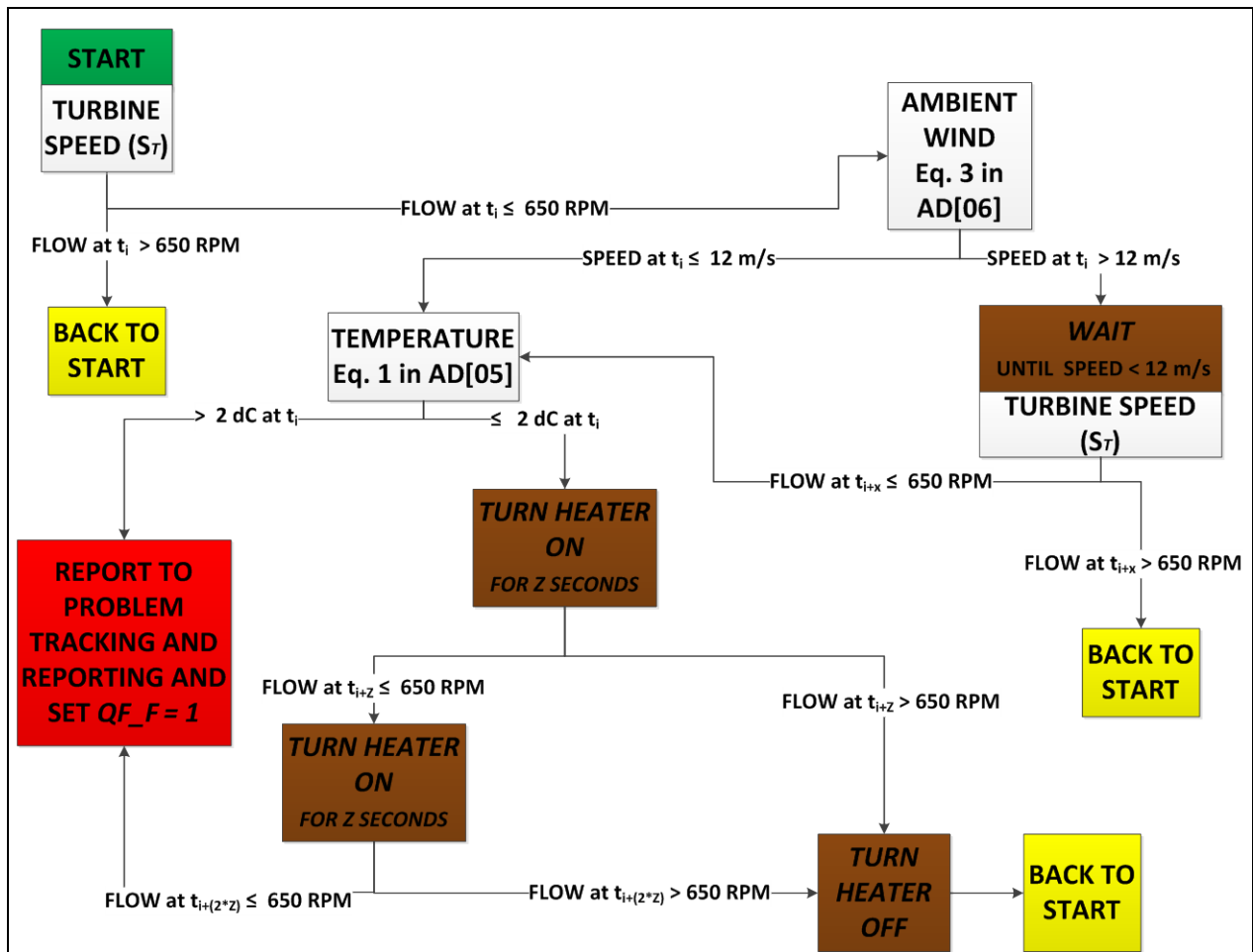


Figure 1. Command and control for turning the heater on as well as generating a flow rate flag in the event of a sensor malfunction

Title: NEON Sensor Command, Control, and Configuration: Single Aspirated Air Temperature		Date: 01/07/2014
NEON Doc. #: NEON.DOC.000302	Author: D. Smith	Revision: B

APPENDIX A RATIONALE FOR HEATING TIME

The heater shall be sufficient to melt ice that is 0.31 cm (0.125 inches) thick on the outside of the inlet tube of the aspirated shield over a length of 20.32 cm (8 inches). The diameter of the aspirated shield inlet is 8.90 cm (3.5 inches).

The volume of the 20.32 cm length of the aspirated shield inlet is 1264.14 cm³:

$$1264.14 = 20.32 \times \pi \left(\frac{8.90}{2} \right)^2$$

The volume of the 20.32 cm length of the aspirated shield inlet covered in 0.31 thick ice is 1446.40 cm³:

$$1446.40 = 20.32 \times \pi \left(\frac{8.90 + 0.31 + 0.31}{2} \right)^2$$

Therefore, the volume of ice covering the aspirated shield is 182.26 cm³:

$$182.26 = 1446.40 - 1264.14$$

If we assume a density of 0.92 g cm⁻³ for ice, the weight of the ice is 167.68 g:

$$167.68 = 182.26 \times 0.92$$

The enthalpy latent heat of fusion for ice is 334 J g⁻¹ (i.e., 334 W s g⁻¹). Therefore, the energy required to melt the ice is 56,005 W s:

$$56005 = 167.68 \times 334$$

If we assume a 250 W heater is used, the heater would need to be on for 224 seconds to melt the ice:

$$224 = \frac{56005}{250}$$

To provide additional heat to ensure melting, the time is doubled to give a heating time (z) of 448 seconds.