

<i>Title:</i> TOS Site Characterization Report: Domain 05		<i>Date:</i> 01/23/2017
<i>NEON Doc. #:</i> NEON.DOC.003889	<i>Author:</i> R.Krauss	<i>Revision:</i> A

TOS SITE CHARACTERIZATION REPORT: DOMAIN 05

PREPARED BY	ORGANIZATION	DATE
Rachel Krauss	SCI	12/12/2016
Michael Patterson	SCI	12/12/2016
Oliver Smith	SCI	12/12/2016

APPROVALS	ORGANIZATION	APPROVAL DATE
Andrea Thorpe	SCI	01/03/2017
Mike Stewart	SYS	01/22/2017

RELEASED BY	ORGANIZATION	RELEASE DATE
Judy Salazar	CM	01/23/2017

See configuration management system for approval history.

The National Ecological Observatory Network is a project solely funded by the National Science Foundation and managed under cooperative agreement by Battelle. Any opinions, findings, and conclusions or recommendations expressed in this material are those of the author(s) and do not necessarily reflect the views of the National Science Foundation.



<i>Title:</i> TOS Site Characterization Report: Domain 05		<i>Date:</i> 01/23/2017
<i>NEON Doc. #:</i> NEON.DOC.003889	<i>Author:</i> R.Krauss	<i>Revision:</i> A

CHANGE RECORD

REVISION	DATE	ECO#	DESCRIPTION OF CHANGE
A	01/23/2017	ECO-04370	Initial Release

TABLE OF CONTENTS

1	DESCRIPTION	1
1.1	Purpose	1
1.2	Scope	1
2	RELATED DOCUMENTS AND ACRONYMS	1
2.1	Applicable Documents	1
2.2	Reference Documents	1
2.3	Acronyms	2
3	DOMAIN 05 OVERVIEW: GREAT LAKES DOMAIN	3
4	CORE SITE- UNDERC (UNDE)	5
4.1	TOS Spatial Sampling Design	5
4.2	Belowground Biomass	9
4.2.1	Site-Specific Methods	9
4.2.2	Results	9
4.3	Plant Characterization and Phenology Species Selection	11
4.3.1	Site-Specific Methods	11
4.3.2	Results	12
4.4	Beetles	17
4.4.1	Site-Specific Methods	17
4.4.2	Results	18
4.5	Mosquitoes	18
4.5.1	Site-Specific Methods	18
4.5.2	Results	18
4.6	Ticks	20
4.6.1	Site-Specific Methods	20
4.6.2	Results	20
4.7	Species Reference Lists	20

<i>Title:</i> TOS Site Characterization Report: Domain 05		<i>Date:</i> 01/23/2017
<i>NEON Doc. #:</i> NEON.DOC.003889	<i>Author:</i> R.Krauss	<i>Revision:</i> A

5	RELOCATABLE SITE 1- STEIGERWALDT (STEI)	21
5.1	TOS Spatial Sampling Design	21
5.2	Belowground Biomass	26
5.2.1	Site-Specific Methods	26
5.2.2	Results	26
5.3	Plant Characterization and Phenology Species Selection	28
5.3.1	Site-Specific Methods	28
5.3.2	Results	29
5.4	Beetles	34
5.4.1	Site-Specific Methods	34
5.5	Mosquitoes	34
5.5.1	Site-Specific Methods	34
5.6	Ticks	35
5.6.1	Site-Specific Methods	35
5.7	Species Reference Lists	35
6	RELOCATABLE SITE 2- TREEHAVEN (TREE)	36
6.1	TOS Spatial Sampling Design	36
6.2	Belowground Biomass	41
6.2.1	Site-Specific Methods	41
6.2.2	Results	41
6.3	Plant Characterization and Phenology Species Selection	43
6.3.1	Site-Specific Methods	43
6.3.2	Results	44
6.4	Beetles	51
6.4.1	Site-Specific Methods	51
6.5	Mosquitoes	51
6.5.1	Site-Specific Methods	51
6.6	Ticks	51
6.6.1	Site-Specific Methods	51
6.7	Species Reference Lists	51

<i>Title:</i> TOS Site Characterization Report: Domain 05		<i>Date:</i> 01/23/2017
<i>NEON Doc. #:</i> NEON.DOC.003889	<i>Author:</i> R.Krauss	<i>Revision:</i> A

7 REFERENCES	53
8 APPENDIX A: DATA PRODUCT NUMBERS	53

LIST OF TABLES AND FIGURES

Table 1	NLCD land cover classes and area within the TOS site boundary at UNDE.	7
Table 2	NLCD land cover classes and TOS plot numbers at UNDE.	7
Table 3	Number of Distributed Base Plots per NLCD land cover class per protocol at UNDE.	8
Table 4	Number of Tower Plots per protocol at UNDE.	9
Table 5	Fine root mass per depth increment (cm) at UNDE.	9
Table 6	Cumulative fine root mass as a function of depth (cm) at UNDE.	10
Table 7	Fine root biomass sampling summary data at UNDE.	11
Table 8	Site plant characterization and phenology species summary at UNDE.	12
Table 9	Per plot breakdown of species richness, diversity, and herbaceous cover at UNDE.	17
Table 10	Beetle identification results at UNDE.	18
Table 11	Mosquito identification results at UNDE.	18
Table 12	Tick identification results at UNDE.	20
Table 13	NLCD land cover classes and area within the TOS site boundary at STEI.	23
Table 14	NLCD land cover classes and TOS plot numbers at STEI.	24
Table 15	Number of Distributed Base plots per NLCD land cover class per protocol at STEI.	24
Table 16	Number of Tower Plots per protocol at STEI.	25
Table 17	Fine root mass per depth increment (cm) at STEI.	26
Table 18	Cumulative fine root mass as a function of depth (cm) at STEI.	27
Table 19	Fine root biomass sampling summary data at STEI.	28
Table 20	Site plant characterization and phenology species summary at STEI.	29
Table 21	Per plot breakdown of species richness, diversity, and herbaceous cover at STEI.	34
Table 22	NLCD land cover classes and area within the TOS site boundary at TREE.	38
Table 23	NLCD land cover classes and TOS plot numbers at TREE.	39
Table 24	Number of Distributed Base plots per NLCD land cover class per protocol at TREE.	39
Table 25	Number of Tower Plots per protocol at TREE.	40
Table 26	Fine root mass per depth increment (cm) at TREE.	41

<i>Title:</i> TOS Site Characterization Report: Domain 05		<i>Date:</i> 01/23/2017
<i>NEON Doc. #:</i> NEON.DOC.003889	<i>Author:</i> R.Krauss	<i>Revision:</i> A

Table 27	Cumulative fine root mass as a function of depth (cm) at TREE.	42
Table 28	Fine root biomass sampling summary data at TREE.	43
Table 29	Site plant characterization and phenology species summary at TREE.	44
Table 30	Per plot breakdown of species richness, diversity, and herbaceous cover at TREE.	50
Table 31	NEON data product names and descriptions.	53
Figure 1	NEON project map with Domain 05 highlighted in red.	3
Figure 2	Site boundaries within Domain 05.	3
Figure 3	Map of TOS plot centroids within the NEON TOS sampling boundary at UNDE.	6
Figure 4	Map of the tower airshed and TOS centroids at UNDE.	6
Figure 5	Cumulative root mass by pit depth at UNDE.	11
Figure 6	Map of tower and distributed sampling are boundaries at STEI.	22
Figure 7	Map of distributed TOS plot centroids within the NEON TOS sampling boundary at STEI.	22
Figure 8	Map of the tower airshed and TOS centroids at STEI.	23
Figure 9	Cumulative root mass by pit depth at STEI.	28
Figure 10	Map of TOS plot centroids within the NEON TOS sampling boundary at TREE.	37
Figure 11	Map of the tower airshed and TOS centroids at TREE.	38
Figure 12	Cumulative root mass by pit depth at TREE.	43

<i>Title:</i> TOS Site Characterization Report: Domain 05		<i>Date:</i> 01/23/2017
<i>NEON Doc. #:</i> NEON.DOC.003889	<i>Author:</i> R.Krauss	<i>Revision:</i> A

1 DESCRIPTION

1.1 Purpose

Domain and site-specific information collected and described here is used to inform the execution of protocols for the NEON Terrestrial Observation System (TOS), and complements the official NEON TOS data products generated from each site. In addition, the TOS spatial layout and plot allocation is described for each site within the domain.

1.2 Scope

This document includes any site specific characterization methods and the results of characterization efforts for each of the three sites in the Great Lakes domain. For more information about the sampling methods, reference the TOS Site Characterization Methods Document (RD[06]). The geographic coordinates for all TOS sampling locations can be found in the Reference Documents area of the NEON Data Portal and are provided with TOS data product downloads.

2 RELATED DOCUMENTS AND ACRONYMS

2.1 Applicable Documents

Applicable documents contain information that shall be applied in the current document. Examples are higher level requirements documents, standards, rules and regulations.

AD[01]	NEON.DOC.004300	EHSS Policy, Program, and Management Plan
AD[02]	NEON.DOC.050005	Field Operations Job Instruction Training Plan
AD[03]	NEON.DOC.000909	TOS Science Design for Ground Beetle Abundance and Diversity
AD[04]	NEON.DOC.000910	TOS Science Design for Mosquito Abundance, Diversity and Phenology
AD[05]	NEON.DOC.000912	TOS Science Design for Plant Diversity
AD[06]	NEON.DOC.000915	TOS Science Design for Small Mammal Abundance and Diversity
AD[07]	NEON.DOC.000914	TOS Science Design for Plant Biomass, Productivity, and Leaf Area Index
AD[08]	NEON.DOC.000001	NEON Observatory Design

2.2 Reference Documents

Reference documents contain information complementing, explaining, detailing, or otherwise supporting the information included in the current document.

<i>Title:</i> TOS Site Characterization Report: Domain 05		<i>Date:</i> 01/23/2017
<i>NEON Doc. #:</i> NEON.DOC.003889	<i>Author:</i> R.Krauss	<i>Revision:</i> A

RD[01]	NEON.DOC.000008	NEON Acronym List
RD[02]	NEON.DOC.000243	NEON Glossary of Terms
RD[03]	NEON.DOC.000913	TOS Science Design for Spatial Sampling
RD[04]	NEON.DOC.011058	TIS Site Characterization Report
RD[05]	NEON.DOC.002067	AIS Site Characterization Report
RD[06]	NEON.DOC.003885	TOS Site Characterization Methods
RD[07]	NEON.DOC.000481	TOS Protocol and Procedure: Small Mammal Sampling
RD[08]	NEON.DOC.014041	TOS Protocol and Procedure: Breeding Landbird Abundance and Diversity

2.3 Acronyms

Acronym	Definition
BOLD	Barcode of Life Datasystems
NLCD	National Land Cover Database

3 DOMAIN 05 OVERVIEW: GREAT LAKES DOMAIN

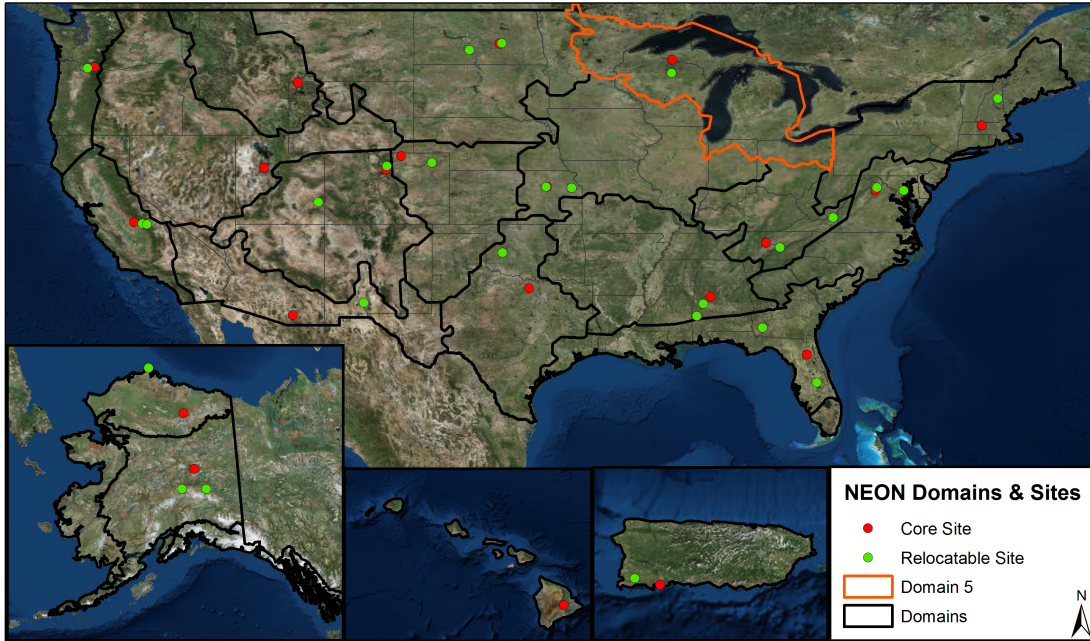


Figure 1: NEON project map with Domain 05 highlighted in red.

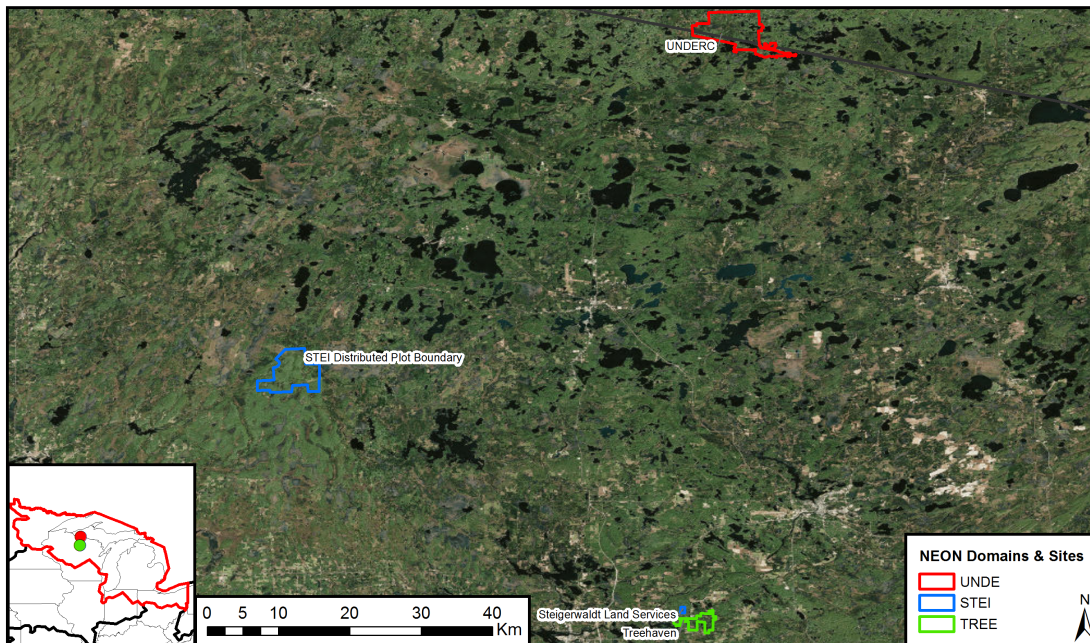


Figure 2: Site boundaries within Domain 05.

<i>Title:</i> TOS Site Characterization Report: Domain 05		<i>Date:</i> 01/23/2017
<i>NEON Doc. #:</i> NEON.DOC.003889	<i>Author:</i> R.Krauss	<i>Revision:</i> A

The Great Lakes Domain is a matrix of forest and water advancing NEON’s ecohydrology theme to examine the connectivity between terrestrial and aquatic ecosystems. Landuse (focusing on forest management) is the main grand challenge theme for this Domain.

- States included in the domain: Illinois, Indiana, Michigan, Minnesota, Ohio, Pennsylvania, West Virginia, Wisconsin
- Core site: UNDERC
- Relocatable 1: Steigerwaldt
- Relocatable 2: Treehaven
- Science themes: Forest Management

Title: TOS Site Characterization Report: Domain 05		Date: 01/23/2017
NEON Doc. #: NEON.DOC.003889	Author: R.Krauss	Revision: A

4 CORE SITE- UNDERC (UNDE)

NEON’s Domain 5 core site is located at the University of Notre Dame Environmental Research Center (UNDERC). Straddling the border between Northern Wisconsin and Michigan’s Upper Peninsula, the UNDERC property comprises approximately 7500 (30.35 km²) acres and is maintained as an environmental education and research facility.

The UNDERC property represents a regenerating, minimally managed forest that is characteristic of the region. This site was selected in contrast with other Great Lakes sites, Treehaven and Steigerwaldt which have varying forestry management history/management and planned future use.

Key Characteristics:

- Site host: University of Notre Dame Environmental Research Center
- Located in: Gogebic County, Michigan and Vilas County, Wisconsin
- TOS Sampling Area: 29.39 km²
- Elevation: 500-540m
- Dominant vegetation type- The UNDERC property primarily includes second-growth Northern mesic forest with dominant species including, red and sugar maple (*Acer rubrum* and *A. saccharum*), aspen (*Populus tremuloides* and *P. grandidentata*) and paper birch (*Betula papyrifera*). Evergreen forests are dominated by balsam fir (*Abies balsamea*) and may also include hemlock (*Tsuga canadensis*) and in the numerous wet areas, cedar (*Thuja occidentalis*) and black spruce (*Picea mariana*). Poorly drained soils on the site can give rise to open, acidic sphagnum bogs dotted with tamarack (*Larix laricina*), black spruce and Ericaceous shrubs.
- General management: Region-wide logging for pine in the late 1800s and early to mid-1900’s led to clear cutting of most forested areas on the property. The main parcel was donated to the University in the 1930s. Timber harvest continued into the 1950s and later, leaving a mixture of successional forest regrowth. Since the 1970s, the site has been minimally managed to maintain access for recreational, educational and research goals.
- UNDERC also has 30 lakes comprising 1350 acres (5.46 km²), including Crampton Lake, a NEON aquatics site. See the AIS site characterization report for more details (RD[05]).
- Plot Selection: NEON TOS Plots were allocated across the site following NEON standard criteria and avoiding existing research.

4.1 TOS Spatial Sampling Design

TOS plots were allocated at UNDE according to a spatially balanced and stratified-random design (RD[3]). The 2006 National Land Cover Database (NLCD) was selected for stratification because of the consistent and comparable data availability across the United States. The maps below depict the plot locations for the first year of NEON sampling. Some plot locations may change over time due to logistics, safety, and science requirements. Please visit the NEON website (<http://www.neonscience.org>) for updated plot locations at each site.

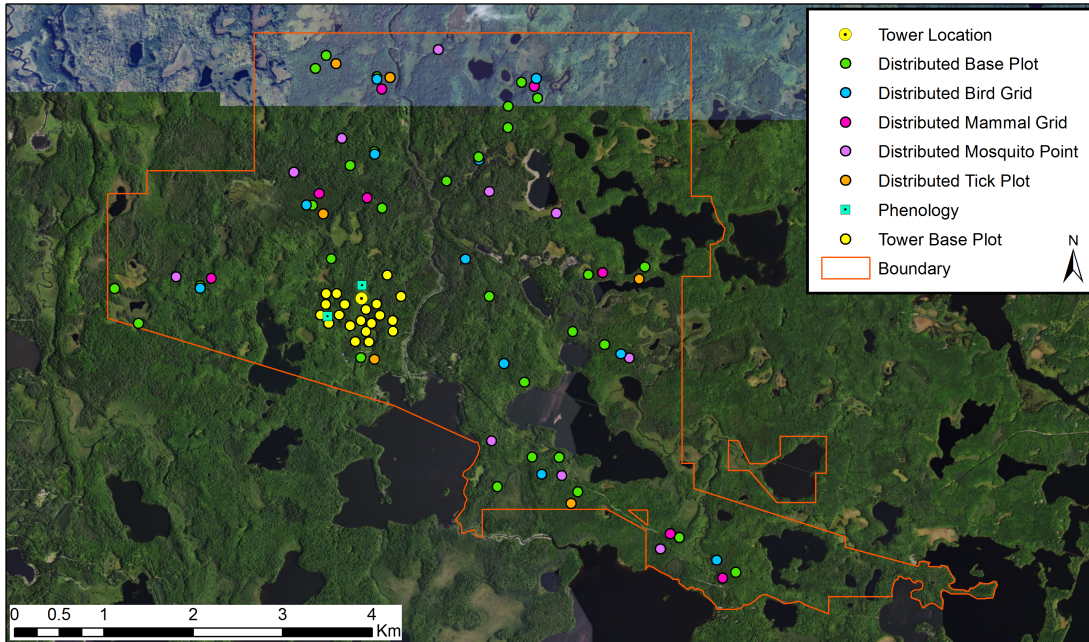


Figure 3: Map of TOS plot centroids within the NEON TOS sampling boundary at UNDE.

For a list of protocols associated with each plot see tables below; for additional spatial design information see RD[03].

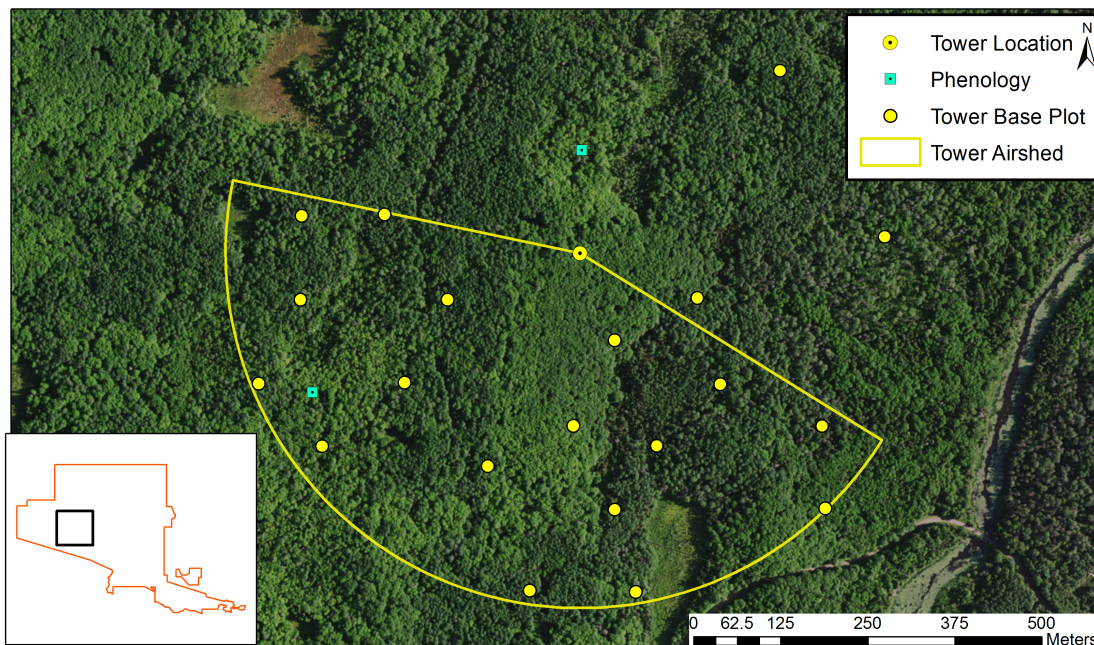


Figure 4: Map of the tower airshed and TOS centroids at UNDE.

More information about the tower airshed can be found in the FIU site characterization report (RD[04]).

Table 1: NLCD land cover classes and area within the TOS site boundary at UNDE.

NLCD Class	Site Area (km ²)	Percent (%)
Woody Wetlands	13.36	45.37
Deciduous Forest	6.28	21.33
Open Water	4.17	14.17
Mixed Forest	2.57	8.72
Developed Open Space	1.36	4.63
Evergreen Forest	0.76	2.58
Emergent Herbaceous Wetlands	0.72	2.46
Shrub Scrub	0.19	0.64
Grassland Herbaceous	0.03	0.1

Note: Any NLCD land cover classes less than 5% will not be sampled. Additionally, no sampling will take place in Water, Developed, or Barren Land NLCD classes.

Table 2: NLCD land cover classes and TOS plot numbers at UNDE.

Plot Type	Plot Subtype	NLCD Class	Number of Plots Established
Distributed	Base Plot	Deciduous Forest	10
Distributed	Base Plot	Mixed Forest	6
Distributed	Base Plot	Woody Wetlands	14
Distributed	Bird Grid	Deciduous Forest	2
Distributed	Bird Grid	Mixed Forest	3
Distributed	Bird Grid	Woody Wetlands	6
Distributed	Mammal Grid	Deciduous Forest	2
Distributed	Mammal Grid	Mixed Forest	2
Distributed	Mammal Grid	Woody Wetlands	4
Distributed	Mosquito Point	Deciduous Forest	3
Distributed	Mosquito Point	Mixed Forest	1
Distributed	Mosquito Point	Woody Wetlands	6
Distributed	Tick Plot	Deciduous Forest	2
Distributed	Tick Plot	Mixed Forest	1
Distributed	Tick Plot	Woody Wetlands	3
Tower	Base Plot	NA	20
Tower	phenology	NA	2

Note: NLCD land cover classes are not used to stratify Tower Plots.

Table 3: Number of Distributed Base Plots per NLCD land cover class per protocol at UNDE.

Plot Type	Plot Subtype	NLCD Class	Protocols	Number of Plots
Distributed	Base Plot	Deciduous Forest	Beetles	3
Distributed	Base Plot	Mixed Forest	Beetles	2
Distributed	Base Plot	Woody Wetlands	Beetles	5
Distributed	Base Plot	Deciduous Forest	Canopy Foliage Chemistry	7
Distributed	Base Plot	Mixed Forest	Canopy Foliage Chemistry	4
Distributed	Base Plot	Woody Wetlands	Canopy Foliage Chemistry	4
Distributed	Base Plot	Deciduous Forest	Coarse Downed Wood	7
Distributed	Base Plot	Mixed Forest	Coarse Downed Wood	4
Distributed	Base Plot	Woody Wetlands	Coarse Downed Wood	9
Distributed	Base Plot	Deciduous Forest	Digital Hemispherical Photos for Leaf Area Index	7
Distributed	Base Plot	Mixed Forest	Digital Hemispherical Photos for Leaf Area Index	4
Distributed	Base Plot	Woody Wetlands	Digital Hemispherical Photos for Leaf Area Index	9
Distributed	Base Plot	Deciduous Forest	Herbaceous Biomass	7
Distributed	Base Plot	Mixed Forest	Herbaceous Biomass	4
Distributed	Base Plot	Woody Wetlands	Herbaceous Biomass	9
Distributed	Base Plot	Deciduous Forest	Plant Diversity	10
Distributed	Base Plot	Mixed Forest	Plant Diversity	6
Distributed	Base Plot	Woody Wetlands	Plant Diversity	14
Distributed	Base Plot	Deciduous Forest	Soil Biogeochemistry	7
Distributed	Base Plot	Mixed Forest	Soil Biogeochemistry	4
Distributed	Base Plot	Deciduous Forest	Soil Microbes	4
Distributed	Base Plot	Mixed Forest	Soil Microbes	2
Distributed	Base Plot	Deciduous Forest	Vegetation Structure	7
Distributed	Base Plot	Mixed Forest	Vegetation Structure	4
Distributed	Base Plot	Woody Wetlands	Vegetation Structure	9

Note: Distributed Base Plots typically support more than one TOS protocol; 'Number of Plots' cannot be added to get total TOS Distributed Base Plot number.

Table 4: Number of Tower Plots per protocol at UNDE.

Plot Type	Plot Subtype	Protocols	Number of Plots
Tower	Base Plot	Below Ground Biomass Coring	20
Tower	Base Plot	Canopy Foliage Chemistry	4
Tower	Base Plot	Coarse Downed Wood	20
Tower	Base Plot	Digital Hemispherical Photos for Leaf Area Index	20
Tower	Base Plot	Herbaceous Biomass	20
Tower	Base Plot	Litterfall and Fine Woody Debris	20
Tower	Base Plot	Plant Diversity	3
Tower	Base Plot	Soil Biogeochemistry	4
Tower	Base Plot	Soil Microbes	4
Tower	Base Plot	Vegetation Structure	20
Tower	Phenology	Plant Phenology	2

Note: Tower Base Plots typically support more than one TOS protocol; ‘Number of Plots’ cannot be added to get the total TOS Tower Base Plot number.

4.2 Belowground Biomass

4.2.1 Site-Specific Methods

Belowground biomass characterization data were collected down to a depth of 200 cm by NEON staff in September 2013. Since the NEON protocol for long-term, operational sampling of belowground biomass only collects data to a depth of 30 cm, the belowground biomass site characterization data are critical for scaling belowground biomass measurements to greater depths; see the TOS Science Design for Plant Biomass, Productivity, and Leaf Area Index (AD[7]) for more information. Samples were collected following the standard methods outlined in TOS Site Characterization Methods (RD[6]). Roots were sorted to two diameter size categories (≤ 2 mm and 2-30 mm) and by root status (live or dead). The tables below summarize all the belowground biomass less than or equal to 30 mm diameter; size class data and more information can be found by searching the NEON data portal for the data product numbers in Appendix A.

4.2.2 Results

Table 5: Fine root mass per depth increment (cm) at UNDE.

Upper Depth	Lower Depth	Mean (mg per cm ³)	Std Dev
0	10	4.59	1.82
10	20	1.21	0.71

Upper Depth	Lower Depth	Mean (mg per cm ³)	Std Dev
20	30	0.41	0.3
30	40	0.26	0.19
40	50	0.97	1.53
50	60	0.04	0.04
60	70	0.02	0.01
70	80	0.03	0.02
80	90	0.17	0.21
90	100	0.15	0.18
100	120	0.11	0.16
120	140	0.14	0.09
140	160	0.03	0.02
160	180	0.01	0.02
180	200	0	0

Table 6: Cumulative fine root mass as a function of depth (cm) at UNDE.

Upper Depth	Lower Depth	Mean Cumulative (g per m ²)	Cumulative Std Dev
0	10	459.09	182.45
10	20	579.86	248.43
20	30	620.55	277.5
30	40	646.67	296.14
40	50	743.25	441.28
50	60	747.21	438.78
60	70	749.65	437.5
70	80	752.8	437.49
80	90	769.51	421.05
90	100	784.89	408.03
100	120	806.55	390.62
120	140	834.37	378.55
140	160	839.57	382.82
160	180	841.47	381.41
180	200	841.6	381.54

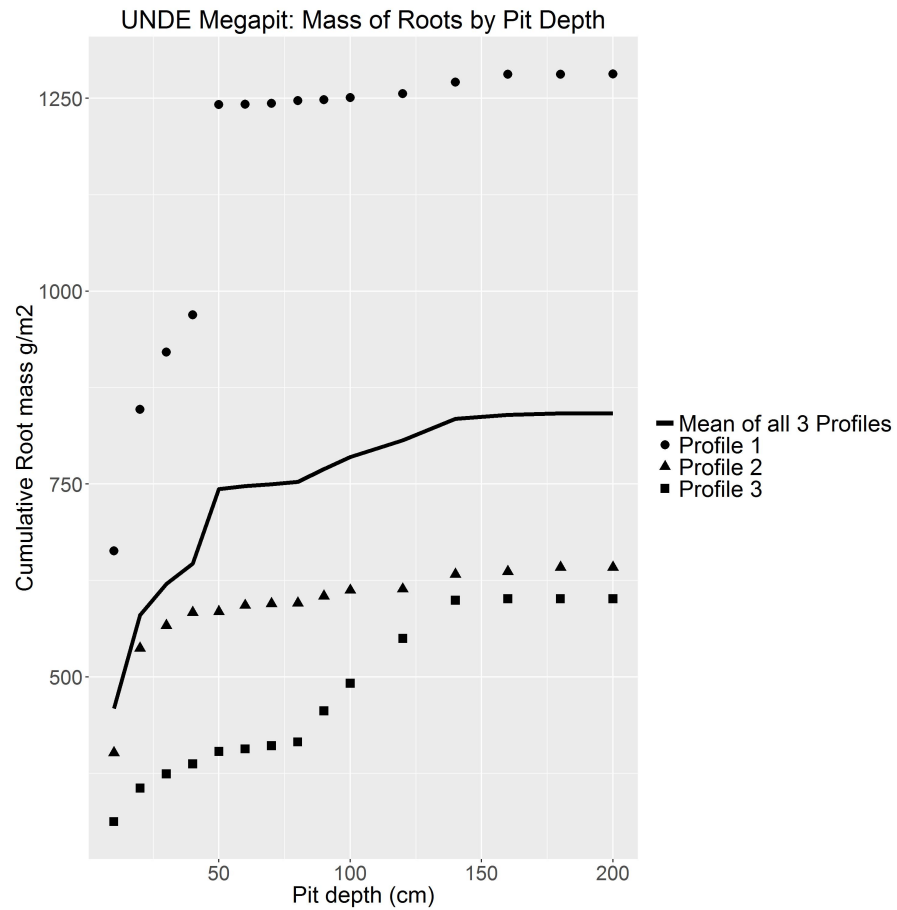


Figure 5: Cumulative root mass by pit depth at UNDE.

Table 7: Fine root biomass sampling summary data at UNDE.

Total Pit Depth (cm)	200
Total Cumulative Mass at 30cm (g per m ²)	620.55
Total Cumulative Mass at 100cm (g per m ²)	784.89
Total Cumulative Mass (g per m ²)	841.6

4.3 Plant Characterization and Phenology Species Selection

4.3.1 Site-Specific Methods

Plant characterization data were collected by an external contractor during the summer of July 2013 following the standard methods outlined in TOS Site Characterization Methods (RD[6]). For more information on this protocol and data product numbers see Appendix A.

4.3.2 Results

Table 8: Site plant characterization and phenology species summary at UNDE.

Taxon ID	Scientific Name	Rank	Mean Percent Cover	Mean Canopy Area per m ²	Mean ABH (cm ² per m ²)
ACSA3	<i>Acer saccharum</i> Marshall	1	10	NA	8.3
ABBA	<i>Abies balsamea</i> (L.) Mill.	2	14	NA	0.84
ACRU	<i>Acer rubrum</i> L.	3	9	NA	3.98
POTR5	<i>Populus tremuloides</i> Michx.	4	<1	NA	4.46
POGR4	<i>Populus grandidentata</i> Michx.	5	<1	NA	4.21
COCO6	<i>Corylus cornuta</i> Marshall	6	5	NA	NA
PTAQ	<i>Pteridium aquilinum</i> (L.) Kuhn	7	4	NA	NA
ALIN2	<i>Alnus incana</i> (L.) Moench	8	3	NA	NA
OSCI	<i>Osmunda cinnamomea</i> L.	9	3	NA	NA
ATFI	<i>Athyrium filix-femina</i> (L.) Roth	10	3	NA	NA
OSVI	<i>Ostrya virginiana</i> (Mill.) K. Koch	11	3	NA	0.02
DRIN5	<i>Dryopteris intermedia</i> (Muhl. ex Willd.) A. Gray	12	2	NA	NA
FRNI	<i>Fraxinus nigra</i> Marshall	13	2	NA	0.46
PIGL	<i>Picea glauca</i> (Moench) Voss	14	<1	NA	1.21
PIMA	<i>Picea mariana</i> (Mill.) Britton, Sterns & Poggenb.	15	1	NA	0.5
COCA13	<i>Cornus canadensis</i> L.	16	2	NA	NA
LALA	<i>Larix laricina</i> (Du Roi) K. Koch	17	NA	NA	1.51
MACA4	<i>Maianthemum canadense</i> Desf.	18	2	NA	NA
RUID	<i>Rubus idaeus</i> L.	19	1	NA	NA
ILMU	<i>Ilex mucronata</i> (L.) Powell, Savolainen & Andrews	20	1	NA	NA

Taxon ID	Scientific Name	Rank	Mean Percent Cover	Mean Canopy Area per m ²	Mean ABH (cm ² per m ²)
CACO7	<i>Carex communis</i> L.H. Bailey	21	1	NA	NA
CAPE6	<i>Carex pensylvanica</i> Lam.	22	<1	NA	NA
DIPA9	<i>Dirca palustris</i> L.	23	<1	NA	NA
PHCO24	<i>Phegopteris connectilis</i> (Michx.) Watt	24	<1	NA	NA
RUPU	<i>Rubus pubescens</i> Raf.	25	<1	NA	NA
BEPA	<i>Betula papyrifera</i> Marshall	26	NA	NA	0.39
LEGR	<i>Ledum groenlandicum</i> Oeder	27	<1	NA	NA
OSCL	<i>Osmorhiza claytonii</i> (Michx.) C.B. Clarke	28	<1	NA	NA
LYDE	<i>Lycopodium dendroideum</i> Michx.	29	<1	NA	NA
FRPE	<i>Fraxinus pennsylvanica</i> Marshall	30	<1	NA	0.03
ILVE	<i>Ilex verticillata</i> (L.) A. Gray	31	<1	NA	NA
GYDR	<i>Gymnocarpium dryopteris</i> (L.) Newman	32	<1	NA	NA
TRBO2	<i>Trientalis borealis</i> Raf.	33	<1	NA	NA
VAMY	<i>Vaccinium myrtilloides</i> Michx.	34	<1	NA	NA
COAL2	<i>Cornus alternifolia</i> L. f.	35	<1	NA	NA
DOUM2	<i>Doellingeria umbellata</i> (Mill.) Nees	36	<1	NA	NA
LYAN2	<i>Lycopodium annotinum</i> L.	37	<1	NA	NA
ORAS	<i>Oryzopsis asperifolia</i> Michx.	37	<1	NA	NA
AMAR3	<i>Amelanchier arborea</i> (Michx. f.) Fernald	39	<1	NA	NA
PRSE2	<i>Prunus serotina</i> Ehrh.	40	<1	NA	0.07
CATU2	<i>Carex tuckermanii</i> Dewey	41	<1	NA	NA
THOC2	<i>Thuja occidentalis</i> L.	42	NA	NA	0.19
TIAM	<i>Tilia americana</i> L.	43	<1	NA	0.18

Taxon ID	Scientific Name	Rank	Mean Percent Cover	Mean Canopy Area per m ²	Mean ABH (cm ² per m ²)
GAH12	<i>Gaultheria hispidula</i> (L.) Muhl. ex Bigelow	44	<1	NA	NA
CADI6	<i>Carex disperma</i> Dewey	45	<1	NA	NA
CLBO3	<i>Clintonia borealis</i> (Aiton) Raf.	46	<1	NA	NA
PIST	<i>Pinus strobus</i> L.	47	<1	NA	0.16
BEAL2	<i>Betula alleghaniensis</i> Britton	48	<1	NA	0.14
OXMO	<i>Oxalis montana</i> Raf.	49	<1	NA	NA
LOCA7	<i>Lonicera canadensis</i> W. Bartram ex Marshall	50	<1	NA	NA
ONSE	<i>Onoclea sensibilis</i> L.	51	<1	NA	NA
ARTR	<i>Arisaema triphyllum</i> (L.) Schott	52	<1	NA	NA
CAREX	<i>Carex</i> sp.	53	<1	NA	NA
COTR2	<i>Coptis trifolia</i> (L.) Salisb.	54	<1	NA	NA
HIERA	<i>Hieracium</i> sp.	54	<1	NA	NA
BRAR9	<i>Brachyelytrum aristosum</i> (Michx.) Trel.	56	<1	NA	NA
MIRE	<i>Mitchella repens</i> L.	57	<1	NA	NA
EQSY	<i>Equisetum sylvaticum</i> L.	58	<1	NA	NA
PYEL	<i>Pyrola elliptica</i> Nutt.	59	<1	NA	NA
RUFL	<i>Rubus flagellaris</i> Willd.	59	<1	NA	NA
PHME13	<i>Photinia melanocarpa</i> (Michx.) K.R. Robertson & Phipps	61	<1	NA	NA
CAAR3	<i>Carex arctata</i> Boott ex Hook.	62	<1	NA	NA
GAPR2	<i>Gaultheria procumbens</i> L.	62	<1	NA	NA
IRVE2	<i>Iris versicolor</i> L.	64	<1	NA	NA
ACRU2	<i>Actaea rubra</i> (Aiton) Willd.	65	<1	NA	NA
CAGR2	<i>Carex gracillima</i> Schwein.	65	<1	NA	NA
CAIN12	<i>Carex intumescens</i> Rudge	65	<1	NA	NA
GATR3	<i>Galium triflorum</i> Michx.	65	<1	NA	NA

Taxon ID	Scientific Name	Rank	Mean Percent Cover	Mean Canopy Area per m ²	Mean ABH (cm ² per m ²)
ULRU	<i>Ulmus rubra</i> Muhl.	69	<1	NA	0.01
RIBES	<i>Ribes</i> sp.	70	<1	NA	NA
ARNU2	<i>Aralia nudicaulis</i> L.	71	<1	NA	NA
PRVI	<i>Prunus virginiana</i> L.	71	<1	NA	NA
VEOF2	<i>Veronica officinalis</i> L.	71	<1	NA	NA
PRPE2	<i>Prunus pensylvanica</i> L. f.	74	<1	NA	NA
SPAL2	<i>Spiraea alba</i> Du Roi	75	<1	NA	NA
CACA11	<i>Carex canescens</i> L.	76	<1	NA	NA
CAGY4	<i>Carex gynandra</i> Schwein.	76	<1	NA	NA
EUMA27	<i>Eurybia macrophylla</i> (L.) Cass.	76	<1	NA	NA
FRVI	<i>Fragaria virginiana</i> Duchesne	76	<1	NA	NA
LIBO3	<i>Linnaea borealis</i> L.	76	<1	NA	NA
PYCH	<i>Pyrola chlorantha</i> Sw.	76	<1	NA	NA
RARE2	<i>Ranunculus recurvatus</i> Poir.	76	<1	NA	NA
VIRO2	<i>Viola rotundifolia</i> Michx.	76	<1	NA	NA
ACPA	<i>Actaea pachypoda</i> Elliott	84	<1	NA	NA
CLVU	<i>Clinopodium vulgare</i> L.	84	<1	NA	NA
GLST	<i>Glyceria striata</i> (Lam.) Hitchc.	84	<1	NA	NA
KAPO	<i>Kalmia polifolia</i> Wangenh.	84	<1	NA	NA
POCU6	<i>Polygonum cuspidatum</i> Siebold & Zucc.	84	<1	NA	NA
POSC3	<i>Polygonum scandens</i> L.	84	<1	NA	NA
PYROL	<i>Pyrola</i> sp.	84	<1	NA	NA
SYCI	<i>Symphotrichum ciliolatum</i> (Lindl.) Á. Löve & D. Löve	84	<1	NA	NA
TAOF	<i>Taraxacum officinale</i> F.H. Wigg.	84	<1	NA	NA
ACSP2	<i>Acer spicatum</i> Lam.	93	<1	NA	NA
COSE16	<i>Cornus sericea</i> L.	94	<1	NA	NA
RHAL	<i>Rhamnus alnifolia</i> L'Hér.	95	<1	NA	NA

Taxon ID	Scientific Name	Rank	Mean Percent Cover	Mean Canopy Area per m ²	Mean ABH (cm ² per m ²)
FRAM2	<i>Fraxinus americana</i> L.	96	<1	NA	NA
ANQU	<i>Anemone quinquefolia</i> L.	97	NA	NA	NA
CACA4	<i>Calamagrostis canadensis</i> (Michx.) P. Beauv.	97	NA	NA	NA
CALA11	<i>Carex lasiocarpa</i> Ehrh.	97	NA	NA	NA
CAMA12	<i>Carex magellanica</i> Lam. ssp. <i>irrigua</i> (Wahlenb.) Hultén	97	NA	NA	NA
CATH2	<i>Caulophyllum thalictroides</i> (L.) Michx.	97	NA	NA	NA
CIAL	<i>Circaea alpina</i> L.	97	NA	NA	NA
CILA2	<i>Cinna latifolia</i> (Trevis. ex Goepf.) Griseb.	97	NA	NA	NA
CORNU	<i>Cornus</i> sp.	97	NA	NA	NA
CRATA	<i>Crataegus</i> sp.	97	NA	NA	NA
DILO	<i>Diervilla lonicera</i> Mill.	97	NA	NA	NA
EUGR5	<i>Euthamia graminifolia</i> (L.) Nutt.	97	NA	NA	NA
GALIU	<i>Galium</i> sp.	97	NA	NA	NA
GATI	<i>Galium tinctorium</i> (L.) Scop.	97	NA	NA	NA
GEMA4	<i>Geum macrophyllum</i> Willd.	97	NA	NA	NA
GEUM	<i>Geum</i> sp.	97	NA	NA	NA
LYOB	<i>Lycopodium obscurum</i> L.	97	NA	NA	NA
MAIAN	<i>Maianthemum</i> sp.	97	NA	NA	NA
MILIU	<i>Milium</i> sp.	97	NA	NA	NA
MOHY3	<i>Monotropa hypopithys</i> L.	97	NA	NA	NA
MOUN3	<i>Monotropa uniflora</i> L.	97	NA	NA	NA
OSCL2	<i>Osmunda claytoniana</i> L.	97	NA	NA	NA
POBI2	<i>Polygonatum biflorum</i> (Walter) Elliott	97	NA	NA	NA
SCLA2	<i>Scutellaria lateriflora</i> L.	97	NA	NA	NA
VIOLA	<i>Viola</i> sp.	97	NA	NA	NA

Note: Mean canopy area is collected for shrubs. Mean area at breast height (ABH) is collected for trees. Taxon IDs and scientific names are based on the USDA Plants database (plants.usda.gov).

Table 9: Per plot breakdown of species richness, diversity, and herbaceous cover at UNDE.

Plot ID	Species Richness	Shannon Diversity Index	Percent Total Herbaceous Cover
14694	26	2.4	52
UNDE_037	23	2.4	133
UNDE_038	22	1.49	73
UNDE_043	31	2.64	79
UNDE_044	23	2.63	56
UNDE_045	33	2.83	68
UNDE_047	15	2	62
UNDE_048	22	2.33	40
UNDE_049	37	2.74	149
UNDE_050	31	2.83	53
UNDE_052	27	2.02	69
UNDE_053	19	2.32	85
UNDE_054	11	1.61	60
UNDE_055	20	2.04	88
UNDE_056	26	2.56	38
UNDE_057	18	2.1	51
UNDE_058	24	2.34	75
UNDE_059	20	1.88	77
UNDE_060	27	2.86	54
UNDE_061	14	1.78	19

Note: Percent herbaceous cover was measured by species and then added together to calculate the percent total herbaceous cover for each plot. Plot 14694 is no longer being sampled and was not assigned a UNDE plot ID.

4.4 Beetles

4.4.1 Site-Specific Methods

Beetle site characterization was conducted in June 2013 by NEON staff following the standard methods outlined in TOS Site Characterization Methods (RD[6]). Beetle site characterization data was collected to start site level teaching collections. All samples were pooled before being sent for identification. For DNA sequence data generated as a result of these efforts, visit the Barcode of Life Datasystems (BOLD) at <http://www.boldsystems.org>. For more information on this protocol and data product numbers see Appendix A.

Title: TOS Site Characterization Report: Domain 05		Date: 01/23/2017
NEON Doc. #: NEON.DOC.003889	Author: R.Krauss	Revision: A

4.4.2 Results

Table 10: Beetle identification results at UNDE.

Sample ID	Scientific Name
NEONTcarabid8107	<i>Poecilus lucublandus</i>
NEONTcarabid8109	<i>Pterostichus coracinus</i>
NEONTcarabid8108	<i>Sphaeroderus stenostomus lecontei</i>
NEONTcarabid8106	<i>Pterostichus pensylvanicus</i>
NEONcarabid8105	<i>Pterostichus pensylvanicus</i>

4.5 Mosquitoes

4.5.1 Site-Specific Methods

Mosquito site characterization was conducted in June 2013 by NEON staff following the standard methods outlined in TOS Site Characterization Methods (RD[6]) to test protocol methods and start site level species lists. All samples were pooled before being sent for identification. No pathogen testing was performed. For DNA sequence data generated as a result of these efforts, visit the Barcode of Life Datasystems (BOLD) at <http://www.boldsystems.org>. For more information on this protocol and data product numbers see Appendix A.

4.5.2 Results

Table 11: Mosquito identification results at UNDE.

Vial ID	Scientific Name	sex	Individual Count
UNDE.June2013.SC.1	<i>Aedes canadensis canadensis</i>	female	74
UNDE.June2013.SC.1	<i>Aedes cinereus</i>	female	18
UNDE.June2013.SC.1	<i>Aedes provocans</i>	female	1
UNDE.June2013.SC.1	<i>Aedes spp.</i>	female	96
UNDE.June2013.SC.1	<i>Aedes spp.</i>	male	1
UNDE.June2013.SC.1	<i>Coquillettidia perturbans</i>	female	9
UNDE.June2013.SC.1	<i>Culex restuans</i>	female	1
UNDE.June2013.SC.2	<i>Aedes canadensis canadensis</i>	female	89
UNDE.June2013.SC.2	<i>Aedes cinereus</i>	female	12
UNDE.June2013.SC.2	<i>Aedes provocans</i>	female	3
UNDE.June2013.SC.2	<i>Aedes vexans</i>	female	1

Vial ID	Scientific Name	sex	Individual Count
UNDE.June2013.SC.2	<i>Aedes spp.</i>	female	84
UNDE.June2013.SC.2	<i>Coquillettidia perturbans</i>	female	7
UNDE.June2013.SC.2	<i>Culex restuans</i>	female	4
UNDE.June2013.SC.3	<i>Aedes canadensis canadensis</i>	female	78
UNDE.June2013.SC.3	<i>Aedes cinereus</i>	female	8
UNDE.June2013.SC.3	<i>Aedes excrucians</i>	female	5
UNDE.June2013.SC.3	<i>Aedes provocans</i>	female	9
UNDE.June2013.SC.3	<i>Aedes spp.</i>	female	90
UNDE.June2013.SC.3	<i>Aedes spp.</i>	male	2
UNDE.June2013.SC.3	<i>Anopheles punctipennis</i>	female	2
UNDE.June2013.SC.3	<i>Coquillettidia perturbans</i>	female	6
UNDE.June2013.SC.4	<i>Aedes canadensis canadensis</i>	female	82
UNDE.June2013.SC.4	<i>Aedes cinereus</i>	female	8
UNDE.June2013.SC.4	<i>Aedes excrucians</i>	female	2
UNDE.June2013.SC.4	<i>Aedes provocans</i>	female	5
UNDE.June2013.SC.4	<i>Aedes vexans</i>	female	1
UNDE.June2013.SC.4	<i>Aedes spp.</i>	female	83
UNDE.June2013.SC.4	<i>Coquillettidia perturbans</i>	female	17
UNDE.June2013.SC.4	<i>Culex restuans</i>	female	2
UNDE.June2013.SC.5	<i>Aedes canadensis canadensis</i>	female	90
UNDE.June2013.SC.5	<i>Aedes cinereus</i>	female	8
UNDE.June2013.SC.5	<i>Aedes excrucians</i>	female	2
UNDE.June2013.SC.5	<i>Aedes provocans</i>	female	2
UNDE.June2013.SC.5	<i>Aedes vexans</i>	female	1
UNDE.June2013.SC.5	<i>Aedes spp.</i>	female	85
UNDE.June2013.SC.5	<i>Coquillettidia perturbans</i>	female	10
UNDE.June2013.SC.5	<i>Culex restuans</i>	female	2

Title: TOS Site Characterization Report: Domain 05		Date: 01/23/2017
NEON Doc. #: NEON.DOC.003889	Author: R.Krauss	Revision: A

4.6 Ticks

4.6.1 Site-Specific Methods

Tick drags were conducted at UNDE in June 2013 by NEON staff to test protocol methods and calculate capture rates. No pathogen testing was performed. All samples were pooled before being sent for identification. For more information on this protocol and data product numbers see Appendix A.

4.6.2 Results

Table 12: Tick identification results at UNDE.

Sample ID	Scientific Name
20130625.SC.1	<i>Dermacentor variabilis</i>
20130625.SC.1	<i>Ixodes scapularis</i>

4.7 Species Reference Lists

A review of the literature for taxonomic lists of interest for each site was conducted prior to field work. In the case of vertebrates that NEON may capture (e.g., reptiles, amphibians, small mammals), these lists were often required to secure permits. Key references identified in this effort are listed below. Species lists and associated references for small mammals and breeding landbirds can be found in the appendices of the respective protocols (RD[07], RD[08]).

Bousquet, Y. 2012. Catalogue of Geadephaga (Coleoptera, Adephaga) of America, north of Mexico. ZooKeys, (245), 1-1722.

Centers for Disease Control and Prevention. (2015). *Geographic distribution of ticks that bite humans*. Retrieved from http://www.cdc.gov/ticks/geographic_distribution.html

Darsie Jr., R. F., and R. A. Ward. 2005. Identification and geographical distribution of the mosquitoes of North America, North of Mexico. University Press of Florida, Gainesville.

University of Notre Dame.(2016). *Plants* Retrieved from <http://underc.nd.edu/underc-east/the-environment/plant-species/>

University of Notre Dame.(2016). *Vertebrates* Retrieved from <http://underc.nd.edu/underc-east/the-environment/vertebrate-species-lists/>

Title: TOS Site Characterization Report: Domain 05		Date: 01/23/2017
NEON Doc. #: NEON.DOC.003889	Author: R.Krauss	Revision: A

5 RELOCATABLE SITE 1- STEIGERWALDT (STEI)

The Domain 5 relocatable terrestrial site Steigerwaldt consists of two separate properties that are not spatially connected. The site of NEON’s tower and related field study plots is managed and owned by Steigerwaldt Land Services, Inc. and is located to the east of Tomahawk, WI, approximately 1 mile north of the Treehaven site. However, the property was too small for NEON’s Distributed Plot activities. Consequently, NEON has established a separate set of Distributed Plots in the Park Falls District of the Chequamegon-Nicolet National Forest (CNNF), about 30 miles NW of the Steigerwaldt tower.

The Steigerwaldt tower location and surrounding Tower Plots are approximately 1 mile due north of the Treehaven tower and its surrounding plots. Because the sites are managed differently, the close proximity of the towers could help isolate the effect of management practices on carbon cycling dynamics.

Key Characteristics:

- Site host: Steigerwaldt Land Services and Chequamegon-Nicolet National Forest (CNNF)
- Located in: Lincoln and Price counties, Wisconsin
- Combined Area: 23.4 km²
- Elevation: 460-530m
- Dominant vegetation type- The Steigerwaldt tower site is a young, even-aged stand, with aspen (*Populus tremuloides*), red maple (*Acer rubrum*), and balsam fir (*Abies balsamea*) among the most abundant tree species. The NEON study area in the CNNF Park Falls District encompasses a diversity of forest stands. The area includes pine, hemlock, aspen, northern hardwoods, including CCC-planted red and jack pine plantations.
- General management: The Steigerwaldt tower site is managed for timber production and recreation. The stand was cut in 2005, with some scattered oak and hemlock left for wildlife food and roost. Roads are planted with clover as additional food source for deer and ruffed grouse. Logging is active in the area, although different management systems may vary. The CNNF Park Falls District’s timber program has recently been dominated by salvage timber projects following ice and hail damage, windstorms, tornadoes, and spruce decline, followed by a recent focus in over-mature aspen stands in both Price and Taylor County. Over the last several years, the District has been moving out of salvage mode with recently approved vegetation management and forest health projects in pine and hardwood management areas.
- Plot Selection: NEON TOS Plots were allocated across the site following NEON standard criteria and avoiding existing research. The NEON study area in the CNNF is in close proximity to other research activities that have focused on land-atmosphere carbon interactions including the Chequamegon Ecosystem Atmosphere Study, or ChEAS.

5.1 TOS Spatial Sampling Design

TOS plots were allocated at STEI according to a spatially balanced and stratified-random design (RD[3]). The 2006 National Land Cover Database (NLCD) was selected for stratification because of the consistent and comparable data availability across the United States. The maps below depict the plot locations for the first year of NEON sampling. Some plot locations may change over time due to logistics, safety, and science requirements. Please visit the NEON website (<http://www.neonscience.org>) for updated plot locations at each site.

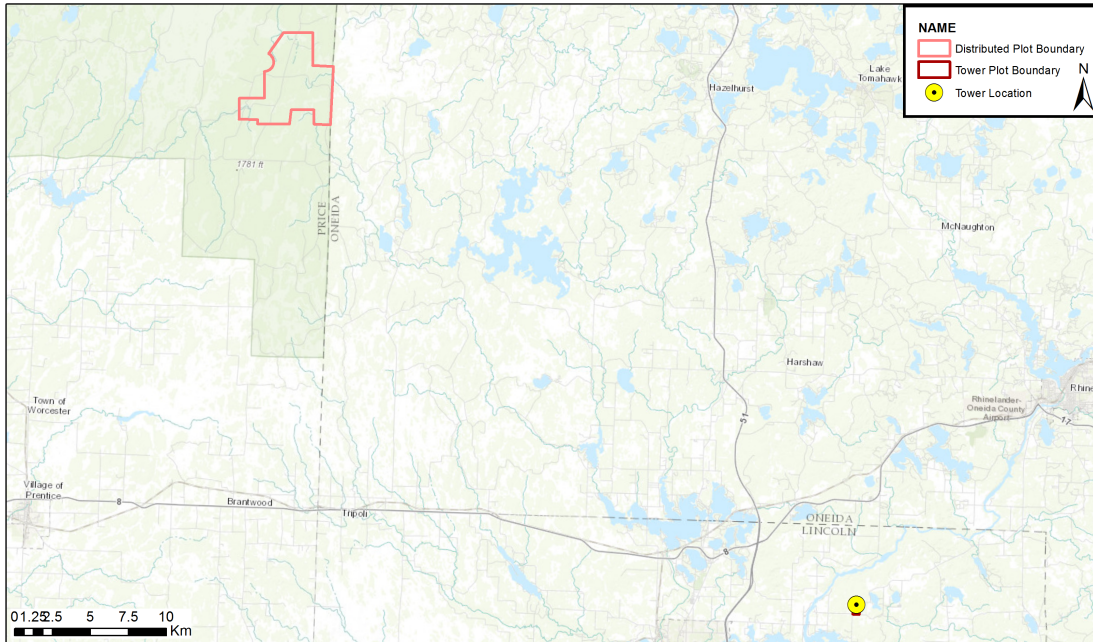


Figure 6: Map of tower and distributed sampling area boundaries at STEI.

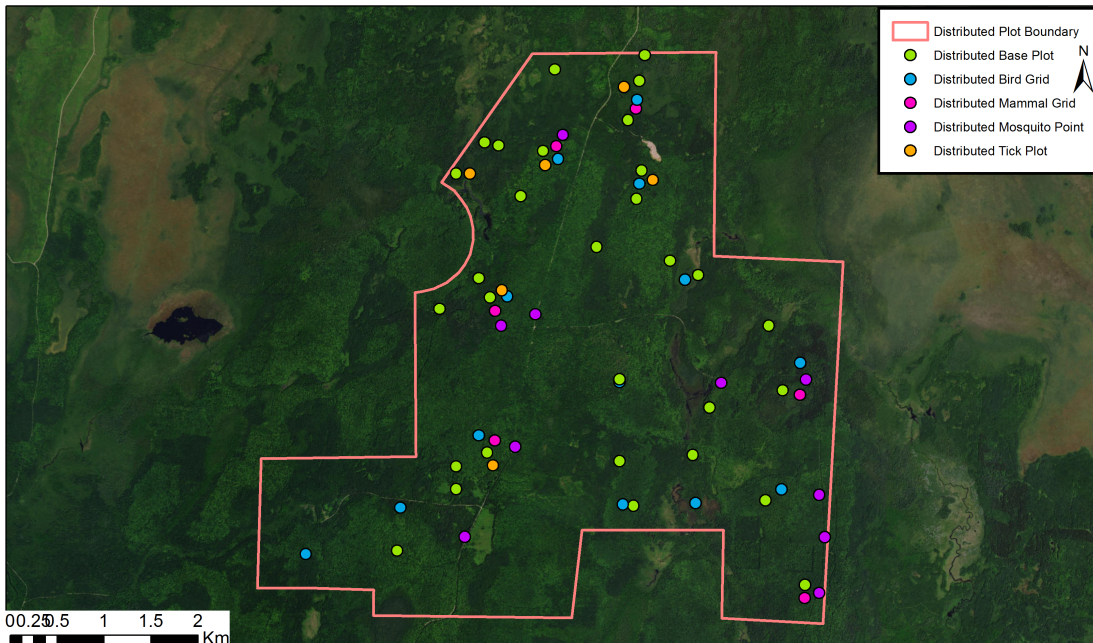


Figure 7: Map of distributed TOS plot centroids within the NEON TOS sampling boundary at STEI.

For a list of protocols associated with each plot see tables below; for additional spatial design information see

RD[03].

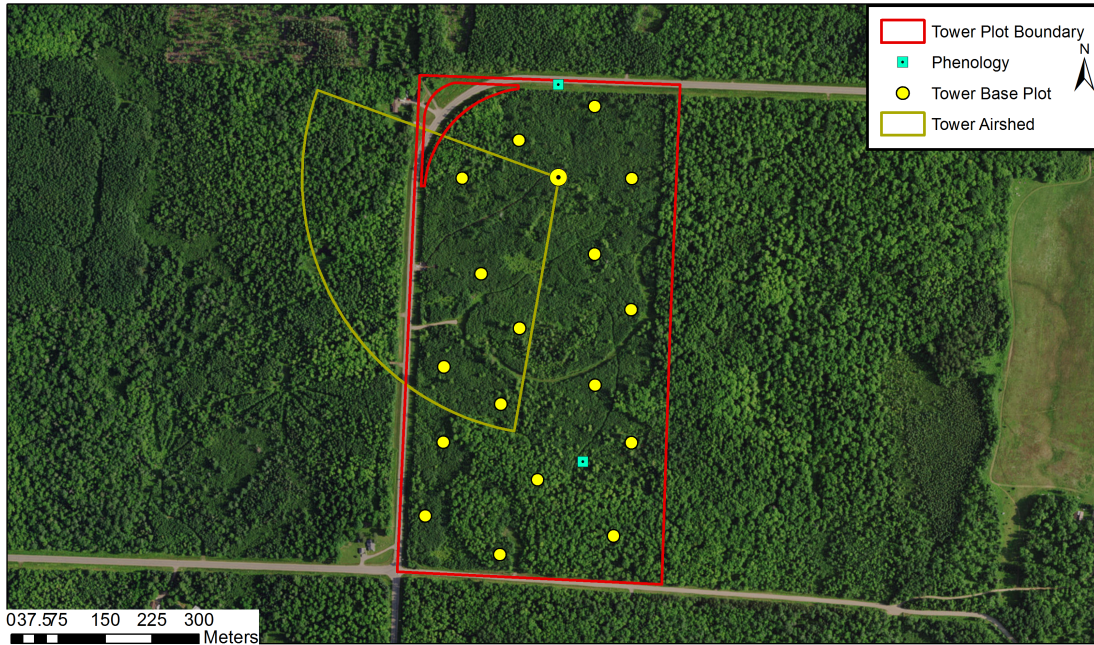


Figure 8: Map of the tower airshed and TOS centroids at STEI.

More information about the tower airshed can be found in the TIS site characterization report (RD[04]).

Table 13: NLCD land cover classes and area within the TOS site boundary at STEI.

NLCD Class	Site Area (km ²)	Percent (%)
Deciduous Forest	16.71	70.34
Woody Wetlands	3.17	13.34
Mixed Forest	2.35	9.89
Developed Open Space	0.61	2.56
Emergent Herbaceous Wetlands	0.43	1.82
Evergreen Forest	0.22	0.94
Grassland Herbaceous	0.13	0.56
Shrub Scrub	0.08	0.33
Open Water	0.04	0.17
Cultivated Crops	0.01	0.06

Note: Any NLCD land cover classes less than 5% will not be sampled. Additionally, no sampling will take place in Water, Developed, or Barren Land NLCD classes.

Table 14: NLCD land cover classes and TOS plot numbers at STEI.

Plot Type	Plot Subtype	NLCD Class	Number of Plots Established
Distributed	Base Plot	Deciduous Forest	17
Distributed	Base Plot	Mixed Forest	6
Distributed	Base Plot	Woody Wetlands	7
Distributed	Bird Grid	Deciduous Forest	10
Distributed	Bird Grid	Mixed Forest	2
Distributed	Bird Grid	Woody Wetlands	3
Distributed	Mammal Grid	Deciduous Forest	4
Distributed	Mammal Grid	Mixed Forest	1
Distributed	Mammal Grid	Woody Wetlands	1
Distributed	Mosquito Point	Deciduous Forest	8
Distributed	Mosquito Point	Mixed Forest	1
Distributed	Mosquito Point	Woody Wetlands	1
Distributed	Tick Plot	Deciduous Forest	4
Distributed	Tick Plot	Mixed Forest	1
Distributed	Tick Plot	Woody Wetlands	1
Tower	Base Plot	NA	17
Tower	Phenology Plot	NA	2

Note: NLCD land cover classes are not used to stratify Tower Plots.

Table 15: Number of Distributed Base plots per NLCD land cover class per protocol at STEI.

Plot Type	Plot Subtype	NLCD Class	Protocols	Number of Plots
Distributed	Base Plot	Deciduous Forest	Beetles	8
Distributed	Base Plot	Mixed Forest	Beetles	1
Distributed	Base Plot	Woody Wetlands	Beetles	1
Distributed	Base Plot	Deciduous Forest	Canopy Foliage Chemistry	5
Distributed	Base Plot	Mixed Forest	Canopy Foliage Chemistry	1
Distributed	Base Plot	Deciduous Forest	Coarse Downed Wood	16
Distributed	Base Plot	Mixed Forest	Coarse Downed Wood	2
Distributed	Base Plot	Woody Wetlands	Coarse Downed Wood	2
Distributed	Base Plot	Deciduous Forest	Digital Hemispherical Photos for Leaf Area Index	16

Plot Type	Plot Subtype	NLCD Class	Protocols	Number of Plots
Distributed	Base Plot	Mixed Forest	Digital Hemispherical Photos for Leaf Area Index	2
Distributed	Base Plot	Woody Wetlands	Digital Hemispherical Photos for Leaf Area Index	2
Distributed	Base Plot	Deciduous Forest	Herbaceous Biomass	16
Distributed	Base Plot	Mixed Forest	Herbaceous Biomass	2
Distributed	Base Plot	Woody Wetlands	Herbaceous Biomass	2
Distributed	Base Plot	Deciduous Forest	Plant Diversity	17
Distributed	Base Plot	Mixed Forest	Plant Diversity	6
Distributed	Base Plot	Woody Wetlands	Plant Diversity	7
Distributed	Base Plot	Deciduous Forest	Soil Biogeochemistry	5
Distributed	Base Plot	Mixed Forest	Soil Biogeochemistry	1
Distributed	Base Plot	Deciduous Forest	Soil Microbes	5
Distributed	Base Plot	Mixed Forest	Soil Microbes	1
Distributed	Base Plot	Deciduous Forest	Vegetation Structure	16
Distributed	Base Plot	Mixed Forest	Vegetation Structure	2
Distributed	Base Plot	Woody Wetlands	Vegetation Structure	2

Note: Distributed Base Plots typically support more than one TOS protocol; 'Number of Plots' cannot be added to get total TOS Distributed Base Plot number.

Table 16: Number of Tower Plots per protocol at STEI.

Plot Type	Plot Subtype	Protocols	Number of Plots
Tower	Base Plot	Below Ground Biomass Coring	17
Tower	Base Plot	Canopy Foliage Chemistry	4
Tower	Base Plot	Coarse Downed Wood	17
Tower	Base Plot	Digital Hemispherical Photos for Leaf Area Index	17
Tower	Base Plot	Herbaceous Biomass	17
Tower	Base Plot	Litterfall and Fine Woody Debris	17
Tower	Base Plot	Plant Diversity	3
Tower	Base Plot	Soil Biogeochemistry	4
Tower	Base Plot	Soil Microbes	4
Tower	Base Plot	Vegetation Structure	17
Tower	Phenology	Plant Phenology	2

Note: Tower Base Plots typically support more than one TOS protocol; ‘Number of Plots’ cannot be added to get total TOS Tower Base Plot number.

5.2 Belowground Biomass

5.2.1 Site-Specific Methods

Belowground biomass characterization data were collected down to a depth of 200 cm by NEON staff in June 2015. Since the NEON protocol for long-term, operational sampling of belowground biomass only collects data to a depth of 30 cm, the belowground biomass site characterization data are critical for scaling belowground biomass measurements to greater depths; see the TOS Science Design for Plant Biomass, Productivity, and Leaf Area Index (AD[7]) for more information. Samples were collected following the standard methods outlined in TOS Site Characterization Methods (RD[6]). Roots were sorted to two diameter size categories (≤ 4 mm and 4-30 mm) and by root status (live or dead). The tables below summarize all the belowground biomass less than or equal to 30 mm diameter; size class data and more information can be found by searching the NEON data portal for the data product numbers in Appendix A.

5.2.2 Results

Table 17: Fine root mass per depth increment (cm) at STEI.

Upper Depth	Lower Depth	Mean (mg per cm ³)	Std Dev
0	10	5.71	2.07
10	20	1.91	0.42
20	30	1.43	0.81
30	40	1.52	1.28
40	50	0.55	0.5
50	60	0.17	0.05
60	70	0.09	0.1
70	80	0.06	0.07
80	90	0.01	0.02
90	100	0	0
100	120	0.05	0.07
120	140	0	0.01
140	160	0.05	0.08
160	180	0	0
180	200	0.01	0.01

Table 18: Cumulative fine root mass as a function of depth (cm) at STEI.

Upper Depth	Lower Depth	Mean Cumulative (g per m²)	Cumulative Std Dev
0	10	571.03	206.79
10	20	762.51	216.62
20	30	905.68	297.26
30	40	1058.06	413.93
40	50	1112.83	457.46
50	60	1129.67	462.49
60	70	1139.07	471.87
70	80	1144.7	478.31
80	90	1146.08	480.32
90	100	1146.41	480.3
100	120	1157.18	472.04
120	140	1157.91	473.07
140	160	1167.27	463.44
160	180	1167.39	463.46
180	200	1169.62	464.88

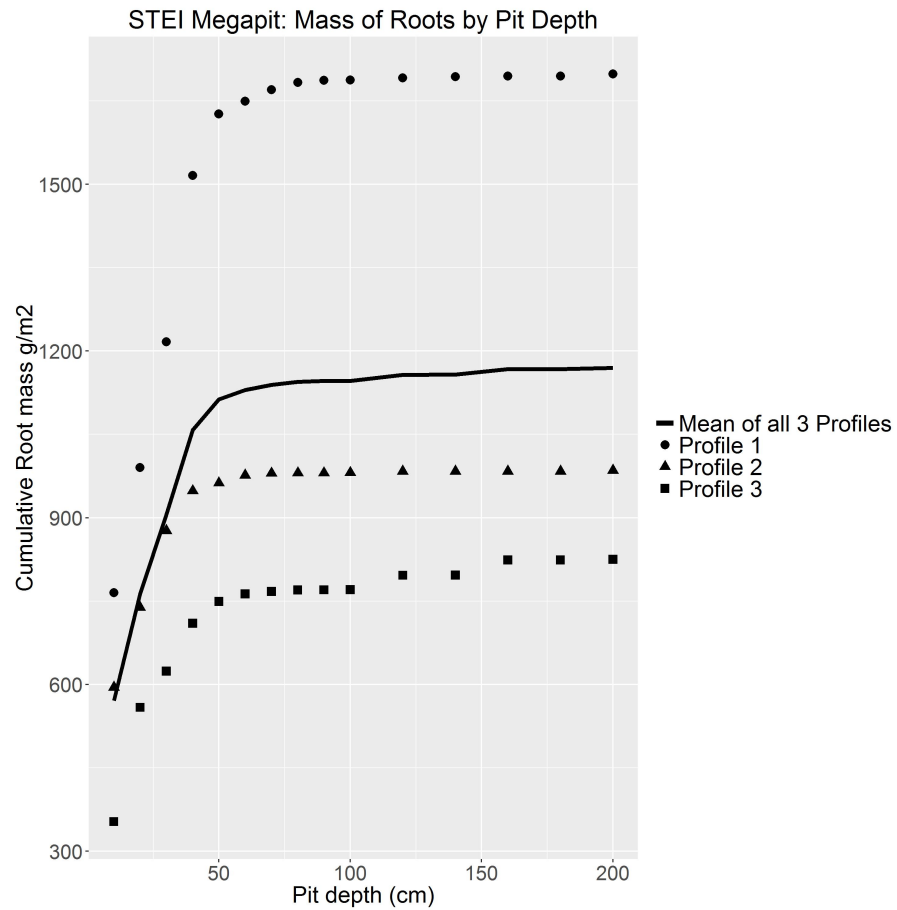


Figure 9: Cumulative root mass by pit depth at STEI.

Table 19: Fine root biomass sampling summary data at STEI.

Total Pit Depth (cm)	200
Total Cumulative Mass at 30cm (g per m ²)	905.68
Total Cumulative Mass at 100cm (g per m ²)	1146.41
Total Cumulative Mass (g per m ²)	1169.62

5.3 Plant Characterization and Phenology Species Selection

5.3.1 Site-Specific Methods

Plant characterization data were collected by NEON staff during the summer of June 2013 following the standard methods outlined in TOS Site Characterization Methods (RD[6]). For more information on this protocol and data product numbers see Appendix A.

5.3.2 Results

Table 20: Site plant characterization and phenology species summary at STEI.

Taxon ID	Scientific Name	Rank	Mean Percent Cover	Mean Canopy Area per m ²	Mean ABH (cm ² per m ²)
POTR5	<i>Populus tremuloides</i> Michx.	1	<1	0.05	5.1
ABBA	<i>Abies balsamea</i> (L.) Mill.	2	3	0.008	1.31
ACRU	<i>Acer rubrum</i> L.	3	<1	0.11	1.39
TSCA	<i>Tsuga canadensis</i> (L.) Carrière	4	<1	NA	1.93
CACA18	<i>Carpinus caroliniana</i> Walter	5	<1	0.001	0
ILVE	<i>Ilex verticillata</i> (L.) A. Gray	6	<1	0.005	0
PTAQ	<i>Pteridium aquilinum</i> (L.) Kuhn	7	4	NA	NA
PIGL	<i>Picea glauca</i> (Moench) Voss	8	<1	NA	0.13
COCA13	<i>Cornus canadensis</i> L.	9	4	NA	NA
FRPE	<i>Fraxinus pennsylvanica</i> Marshall	10	<1	0.001	0.01
CAPE6	<i>Carex pensylvanica</i> Lam.	11	3	NA	NA
FRNI	<i>Fraxinus nigra</i> Marshall	12	<1	NA	0.06
QURU	<i>Quercus rubra</i> L.	14	<1	0	0.45
CAIN12	<i>Carex intumescens</i> Rudge	15	2	NA	NA
ACSA3	<i>Acer saccharum</i> Marshall	16	<1	NA	0.32
MACA4	<i>Maianthemum canadense</i> Desf.	17	1	NA	NA
RUID	<i>Rubus idaeus</i> L.	18	1	NA	NA
DOUM2	<i>Doellingeria umbellata</i> (Mill.) Nees	19	1	NA	NA
PIST	<i>Pinus strobus</i> L.	20	<1	NA	0.22
FRAM2	<i>Fraxinus americana</i> L.	21	<1	0.003	0.01
POGR4	<i>Populus grandidentata</i> Michx.	22	<1	NA	0.17

Taxon ID	Scientific Name	Rank	Mean Percent Cover	Mean Canopy Area per m ²	Mean ABH (cm ² per m ²)
ORAS	<i>Oryzopsis asperifolia</i> Michx.	23	<1	NA	NA
CACA4	<i>Calamagrostis canadensis</i> (Michx.) P. Beauv.	24	<1	NA	NA
RUPU	<i>Rubus pubescens</i> Raf.	25	<1	NA	NA
LOCA7	<i>Lonicera canadensis</i> W. Bartram ex Marshall	26	<1	NA	NA
OSCI	<i>Osmunda cinnamomea</i> L.	27	<1	NA	NA
COCO6	<i>Corylus cornuta</i> Marshall	28	<1	NA	NA
BRAR9	<i>Brachyelytrum aristosum</i> (Michx.) Trel.	29	<1	NA	NA
ALINR	<i>Alnus incana</i> (L.) Moench ssp. <i>rugosa</i> (Du Roi) R.T. Clausen	30	NA	0.007	0
CAGR2	<i>Carex gracillima</i> Schwein.	31	<1	NA	NA
HIAU	<i>Hieracium aurantiacum</i> L.	32	<1	NA	NA
TRBO2	<i>Trientalis borealis</i> Raf.	33	<1	NA	NA
LALA	<i>Larix laricina</i> (Du Roi) K. Koch	34	<1	NA	0.04
VAMY	<i>Vaccinium myrtilloides</i> Michx.	35	<1	NA	NA
TIAM	<i>Tilia americana</i> L.	36	<1	NA	0.08
OSCL	<i>Osmorhiza claytonii</i> (Michx.) C.B. Clarke	37	<1	NA	NA
LUAC	<i>Luzula acuminata</i> Raf.	38	<1	NA	NA
CACR6	<i>Carex crinita</i> Lam.	39	<1	NA	NA
CAAR3	<i>Carex arctata</i> Boott ex Hook.	40	<1	NA	NA
DRIN5	<i>Dryopteris intermedia</i> (Muhl. ex Willd.) A. Gray	40	<1	NA	NA
OSVI	<i>Ostrya virginiana</i> (Mill.) K. Koch	42	<1	NA	NA
CADE9	<i>Carex deweyana</i> Schwein.	43	<1	NA	NA
PYEL	<i>Pyrola elliptica</i> Nutt.	44	<1	NA	NA
SALIX	<i>Salix</i> sp.	45	NA	NA	NA

Taxon ID	Scientific Name	Rank	Mean Percent Cover	Mean Canopy Area per m ²	Mean ABH (cm ² per m ²)
VEOF2	<i>Veronica officinalis</i> L.	46	<1	NA	NA
DRCA11	<i>Dryopteris carthusiana</i> (Vill.) H.P. Fuchs	47	<1	NA	NA
MIRE	<i>Mitchella repens</i> L.	48	<1	NA	NA
SCMI2	<i>Scirpus microcarpus</i> J. Presl & C. Presl	49	<1	NA	NA
FRVI	<i>Fragaria virginiana</i> Duchesne	50	<1	NA	NA
LYAN2	<i>Lycopodium annotinum</i> L.	51	<1	NA	NA
ULAM	<i>Ulmus americana</i> L.	52	<1	NA	0.03
ANQU	<i>Anemone quinquefolia</i> L.	53	<1	NA	NA
AMELA	<i>Amelanchier</i> sp.	54	<1	NA	NA
ONSE	<i>Onoclea sensibilis</i> L.	55	<1	NA	NA
RUOC	<i>Rubus occidentalis</i> L.	56	<1	NA	NA
CACA11	<i>Carex canescens</i> L.	57	<1	NA	NA
SOLID	<i>Solidago</i> sp.	57	<1	NA	NA
CABR15	<i>Carex brunnescens</i> (Pers.) Poir.	59	<1	NA	NA
IRVE2	<i>Iris versicolor</i> L.	60	<1	NA	NA
FRVE	<i>Fragaria vesca</i> L.	61	<1	NA	NA
ARTR	<i>Arisaema triphyllum</i> (L.) Schott	62	<1	NA	NA
CAPR9	<i>Carex projecta</i> Mack.	63	<1	NA	NA
COTR2	<i>Coptis trifolia</i> (L.) Salisb.	63	<1	NA	NA
PRSE2	<i>Prunus serotina</i> Ehrh.	63	<1	NA	NA
PHCO24	<i>Phegopteris connectilis</i> (Michx.) Watt	66	<1	NA	NA
ATFI	<i>Athyrium filix-femina</i> (L.) Roth	67	<1	NA	NA
CIAR4	<i>Cirsium arvense</i> (L.) Scop.	67	<1	NA	NA
FRAXI	<i>Fraxinus</i> sp.	67	<1	NA	NA
OSCL2	<i>Osmunda claytoniana</i> L.	67	<1	NA	NA
POPR	<i>Poa pratensis</i> L.	67	<1	NA	NA

Taxon ID	Scientific Name	Rank	Mean Percent Cover	Mean Canopy Area per m ²	Mean ABH (cm ² per m ²)
RUAL	<i>Rubus allegheniensis</i> Porter	67	<1	NA	NA
SABE2	<i>Salix bebbiana</i> Sarg.	73	NA	NA	0.01
EQSY	<i>Equisetum sylvaticum</i> L.	74	<1	NA	NA
RUHI	<i>Rubus hispidus</i> L.	74	<1	NA	NA
VIRA	<i>Viburnum rafinesqueanum</i> Schult.	76	<1	NA	NA
ILMU	<i>Ilex mucronata</i> (L.) Powell, Savolainen & Andrews	77	<1	NA	NA
TAOFO	<i>Taraxacum officinale</i> F.H. Wigg. ssp. <i>officinale</i>	77	<1	NA	NA
CACA14	<i>Carex careyana</i> Torr. ex Dewey	79	<1	NA	NA
PRVI	<i>Prunus virginiana</i> L.	79	<1	NA	NA
SCPU	<i>Schizachne purpurascens</i> (Torr.) Swallen	81	<1	NA	NA
DILO	<i>Diervilla lonicera</i> Mill.	82	<1	NA	NA
EQFL	<i>Equisetum fluviatile</i> L.	82	<1	NA	NA
MATR4	<i>Maianthemum trifolium</i> (L.) Sloboda	82	<1	NA	NA
CLBO3	<i>Clintonia borealis</i> (Aiton) Raf.	85	<1	NA	NA
LYDE	<i>Lycopodium dendroideum</i> Michx.	85	<1	NA	NA
POCI	<i>Polygonum cilinode</i> Michx.	85	<1	NA	NA
SYLA4	<i>Symphyotrichum lateriflorum</i> (L.) Á. Löve & D. Löve	85	<1	NA	NA
BEAL2	<i>Betula alleghaniensis</i> Britton	89	<1	NA	NA
CAREX	<i>Carex</i> sp.	89	<1	NA	NA
COAL2	<i>Cornus alternifolia</i> L. f.	89	<1	NA	NA
COCO13	<i>Conoclinium coelestinum</i> (L.) DC.	89	<1	NA	NA

Taxon ID	Scientific Name	Rank	Mean Percent Cover	Mean Canopy Area per m ²	Mean ABH (cm ² per m ²)
GAPR2	<i>Gaultheria procumbens</i> L.	89	<1	NA	NA
GATR3	<i>Galium triflorum</i> Michx.	89	<1	NA	NA
POPA5	<i>Polygala paucifolia</i> Willd.	89	<1	NA	NA
RUAC3	<i>Rumex acetosella</i> L.	89	<1	NA	NA
RUBUS	<i>Rubus</i> sp.	89	<1	NA	NA
VIBUR	<i>Viburnum</i> sp.	89	<1	NA	NA
VIOLA	<i>Viola</i> sp.	89	<1	NA	NA
2PLANT	Unknown plant	100	<1	NA	NA
ARNU2	<i>Aralia nudicaulis</i> L.	100	<1	NA	NA
BRPU6	<i>Bromus pubescens</i> Muhl. ex Willd.	100	<1	NA	NA
CHCA4	<i>Chenopodium capitatum</i> (L.) Asch.	100	<1	NA	NA
CHGL2	<i>Chelone glabra</i> L.	100	<1	NA	NA
CILA2	<i>Cinna latifolia</i> (Trevis. ex Goepp.) Griseb.	100	<1	NA	NA
EQPA	<i>Equisetum palustre</i> L.	100	<1	NA	NA
GATR2	<i>Galium trifidum</i> L.	100	<1	NA	NA
JUEF	<i>Juncus effusus</i> L.	100	<1	NA	NA
JUFI	<i>Juncus filiformis</i> L.	100	<1	NA	NA
LACA	<i>Lactuca canadensis</i> L.	100	<1	NA	NA
MATR	<i>Magnolia tripetala</i> (L.) L.	100	<1	NA	NA
MIMI22	<i>Mimosa microphylla</i> Dryand.	100	<1	NA	NA
MOUN3	<i>Monotropa uniflora</i> L.	100	<1	NA	NA
POA	<i>Poa</i> sp.	100	<1	NA	NA
POACEA	Poaceae sp.	100	<1	NA	NA
PRAL2	<i>Prenanthes alba</i> L.	100	<1	NA	NA
PRVU	<i>Prunella vulgaris</i> L.	100	<1	NA	NA
RIAM2	<i>Ribes americanum</i> Mill.	100	<1	NA	NA
RICY	<i>Ribes cynosbati</i> L.	100	<1	NA	NA

Note: Mean canopy area is collected for shrubs. Mean area at breast height (ABH) is collected for trees. Taxon IDs and scientific names are based on the USDA Plants database (plants.usda.gov).

Table 21: Per plot breakdown of species richness, diversity, and herbaceous cover at STEI.

Plot ID	Species Richness	Shannon Diversity Index	Percent Total Herbaceous Cover
STEI_046	31	2.92	66
STEI_047	49	3.27	115
STEI_048	35	2.94	128
STEI_049	34	2.9	112
STEI_050	42	2.67	166
STEI_051	29	3.06	46
STEI_052	39	2.91	102
STEI_053	41	2.57	129
STEI_054	32	2.96	70
STEI_055	30	2.82	72
STEI_056	24	2.11	108
STEI_057	33	2.89	118
STEI_058	31	2.93	51
STEI_059	36	2.62	71
STEI_060	38	2.99	88
STEI_061	33	2.52	104
STEI_062	33	2.71	99

Note: Percent herbaceous cover was measured by species and then added together to calculate the percent total herbaceous cover for each plot.

5.4 Beetles

5.4.1 Site-Specific Methods

Beetle site characterization was not conducted at STEI. For more information on this protocol and data product numbers see Appendix A.

5.5 Mosquitoes

5.5.1 Site-Specific Methods

Mosquito site characterization was not conducted at STEI. For more information on this protocol and data product numbers see Appendix A.

Title: TOS Site Characterization Report: Domain 05		Date: 01/23/2017
NEON Doc. #: NEON.DOC.003889	Author: R.Krauss	Revision: A

5.6 Ticks

5.6.1 Site-Specific Methods

No tick drags were conducted at STEI. For more information on this protocol and data product numbers see Appendix A.

5.7 Species Reference Lists

A review of the literature for taxonomic lists of interest for each site was conducted prior to field work. In the case of vertebrates that NEON may capture (e.g., reptiles, amphibians, small mammals), these lists were often required to secure permits. Key references identified in this effort are listed below. Species lists and associated references for small mammals and breeding landbirds can be found in the appendices of the respective protocols (RD[07], RD[08]).

Bousquet, Y. 2012. Catalogue of Geadephaga (Coleoptera, Adephaga) of America, north of Mexico. *ZooKeys*, (245), 1-1722.

Centers for Disease Control and Prevention.(2015). *Geographic distribution of ticks that bite humans*. Retrieved from http://www.cdc.gov/ticks/geographic_distribution.html

Darsie Jr., R. F., and R. A. Ward. 2005. Identification and geographical distribution of the mosquitoes of North America, North of Mexico. University Press of Florida, Gainesville.

University of Wisconsin-Stevens Point. *Treehaven 2012 Plant List*. Retrieved from https://www.uwsp.edu/cnr-ap/treehaven/Documents/2012_SummerSessionPlantList.pdf.

Watermolen, D.J. and M.D. Murrell. 2001. *Checklists of Wisconsin Vertebrates*. Pub-SS-964. Bureau of Integrated Science Services, Wisconsin Department of Natural Resources, Madison, WI.

Wisconsin Department of Natural Resources National Heritage Conversation Program.(2004). *Wisconsin Endangered and Threatened Species Laws & List*. Retrieved from <http://dnr.wi.gov/files/PDF/pubs/er/ER001.pdf>.

Wisconsin Department of Natural Resources National Heritage Conversation Program. *Wisconsin Amphibian & Reptile Checklist*. Retrieved from <http://dnr.wi.gov/files/PDF/pubs/er/ER0110.pdf>.

Title: TOS Site Characterization Report: Domain 05		Date: 01/23/2017
NEON Doc. #: NEON.DOC.003889	Author: R.Krauss	Revision: A

6 RELOCATABLE SITE 2- TREEHAVEN (TREE)

Treehaven, situated between Rhinelander and Tomahawk, WI, is one of two relocatable sites located in NEON's Great Lakes Domain. The Treehaven property spans 1400 acres (5.67 km²) and is owned and operated by the University of Wisconsin-Stevens Point (UWSP), College of Natural Resources.

The Treehaven tower location and surrounding Tower Plots are approximately 1 mile due south of the Steigerwaldt tower and its surrounding plots. Because the sites are managed differently, the close proximity of the towers could help isolate the effect of management practices on carbon cycling dynamics.

Key Characteristics:

- Site host: University of Wisconsin-Stevens Point (UWSP), College of Natural Resources and a Private Landowner
- Located in: Lincoln county, Wisconsin
- Area: 5.67 km²
- Elevation: 445-485m
- Dominant vegetation type- Most of the forests on the property are second growth forests which naturally regenerated after extensive fires and grazing were excluded from the site; however, there are a few, isolated, large diameter trees that pre-date the period of heavy timber harvest. Lowland areas consist of black spruce (*Picea mariana*)/tamarack (*Larix laricina*) and non-forested acid bog environments, along with a mix of sedge, shrub, hardwood and cedar wetlands. Upland sites are primarily composed of aspen (*Populus tremuloides*), paper birch (*Betula papyrifera*), and red maple (*Acer rubrum*), with a lesser area of mixed red pine (*Pinus resinosa*), white pine (*Pinus strobus*), white spruce (*Picea glauca*), and balsam fir (*Abies balsamea*). Red pines planted under the 1956 management plan are prominent along roads throughout the property. A minor component of northern hardwoods and hemlock hardwoods are also present in smaller area, especially on the western edge of the property.
- General management: From the mid 1800's until about 1930, the land was heavily harvested and burned with extensive cutovers and destructive wildfires. Farming was attempted on the cutover land and the open areas were subsequently grazed and mowed until the mid 1950s. In the 1950's the property came under new ownership and a management plan was developed calling for reforestation, sustainable timber harvest, and timber stand improvements. In 1979, 850 acres were donated to the University of Wisconsin-Stevens Point, and the university has since expanded to 1400 acres through additional purchases and donations. Since acquiring the land in 1979, UWSP students and staff have used the site to study forest vegetation, fire history, watersheds, and soils. In addition, forest improvement practices (timber harvest, thinning, and planting) have occurred on nearly 500 acres. Management activities in the proximity of NEON's tower currently are geared to the promotion of sugar maple.
- Plot Selection: NEON TOS Plots were allocated across the site following NEON standard criteria and avoiding existing research.

6.1 TOS Spatial Sampling Design

TOS plots were allocated at TREE according to a spatially balanced and stratified-random design (RD[3]). The 2006 National Land Cover Database (NLCD) was selected for stratification because of the consistent and comparable

data availability across the United States. At Treehaven, some of the grassland and shrubland areas were erroneously classified as emergent herbaceous wetland by the NLCD. Due to this uncertainty, these parts of landscape will not be sampled initially. The emergent herbaceous wetland pixels will be reclassified with data from NEON’s remote sensing platform and there will be a slight reallocation of sampling effort to facilitate observation of all target components of the landscape. TOS plots that are distributed throughout the site according to the spatial design are hereafter referred to as ‘Distributed Plots’. TOS plots that are randomly allocated within the airshed of the NEON Terrestrial Instrument System (TIS) tower to collect complementary data are not stratified by NLCD class; these plots are hereafter referred to as ‘Tower Plots’. The maps below depict the plot locations for the first year of NEON sampling. Some plot locations may change over time due to logistics, safety, and science requirements. Please visit the NEON website (<http://www.neonscience.org>) for updated plot locations at each site.

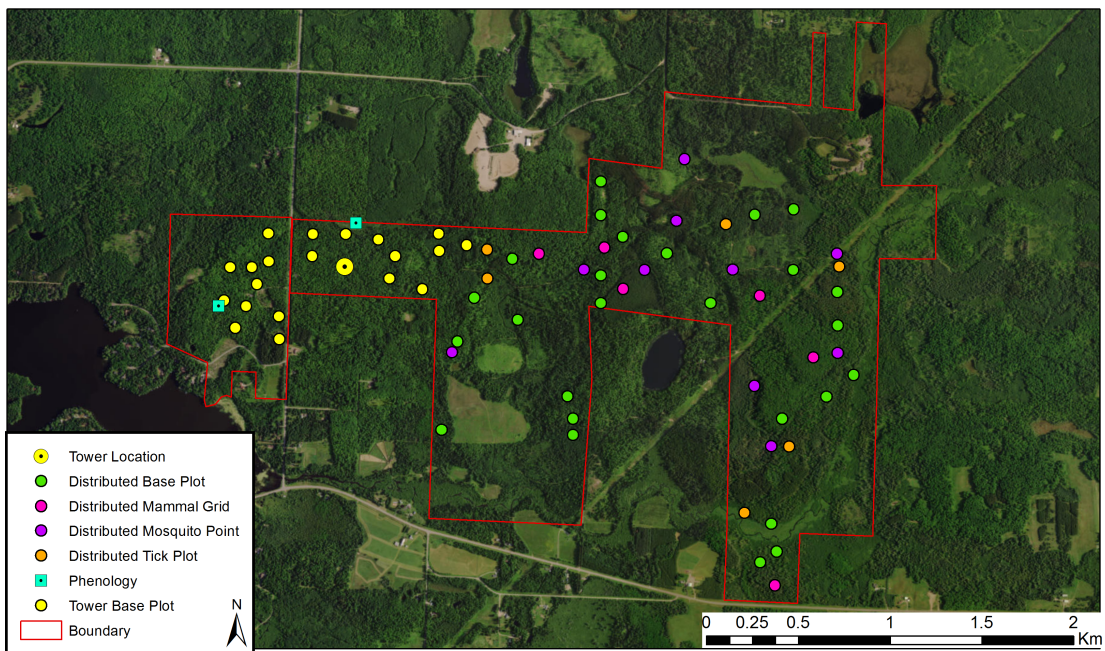


Figure 10: Map of TOS plot centroids within the NEON TOS sampling boundary at TREE.

For a list of protocols associated with each plot see tables below; for additional spatial design information see RD[03].

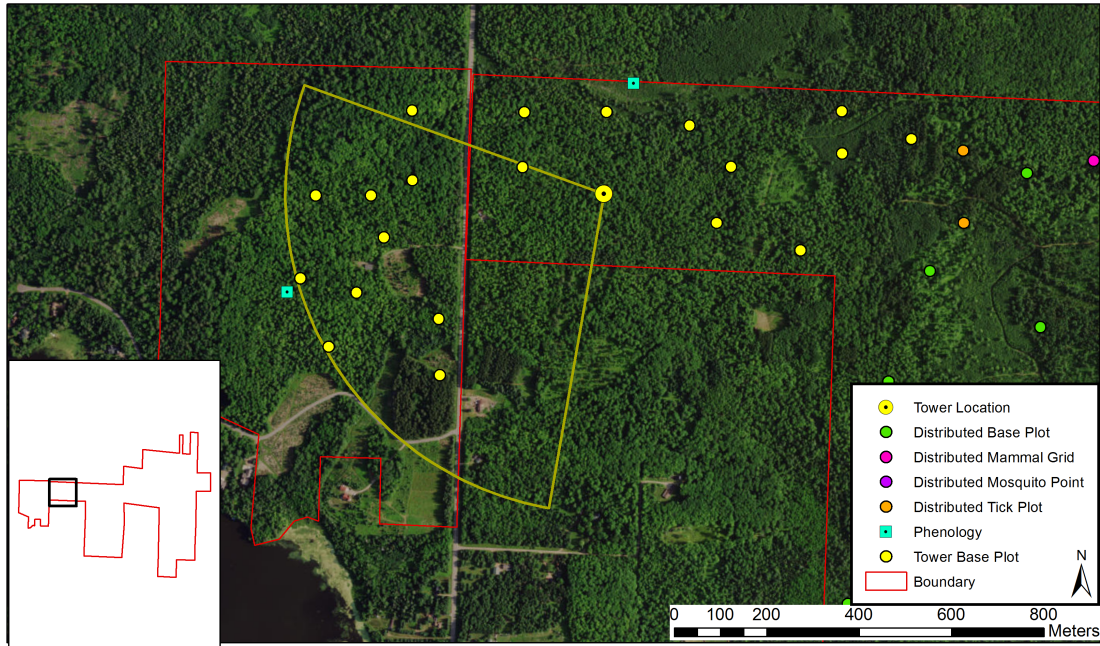


Figure 11: Map of the tower airshed and TOS centroids at TREE.

More information about the tower airshed can be found in the TIS site characterization report (RD[04]).

Table 22: NLCD land cover classes and area within the TOS site boundary at TREE.

NLCD Class	Site Area (km ²)	Percent (%)
Woody Wetlands	1.46	30.86
Mixed Forest	1.15	24.37
Deciduous Forest	0.98	20.66
Evergreen Forest	0.42	8.89
Emergent Herbaceous Wetlands	0.39	8.3
Grassland Herbaceous	0.2	4.19
Developed Open Space	0.09	1.94
Open Water	0.02	0.32
Shrub Scrub	0.01	0.25
Developed Low Intensity	0.01	0.21

Note: Any NLCD land cover classes less than 5% will not be sampled. Additionally, no sampling will take place in Water, Developed, or Barren Land NLCD classes.

Table 23: NLCD land cover classes and TOS plot numbers at TREE.

Plot Type	Plot Subtype	NLCD Class	Number of Plots Established
Distributed	Base Plot	Deciduous Forest	17
Distributed	Base Plot	Mixed Forest	6
Distributed	Base Plot	Woody Wetlands	7
Distributed	Bird Grid	Deciduous Forest	10
Distributed	Bird Grid	Mixed Forest	2
Distributed	Bird Grid	Woody Wetlands	3
Distributed	Mammal Grid	Deciduous Forest	4
Distributed	Mammal Grid	Mixed Forest	1
Distributed	Mammal Grid	Woody Wetlands	1
Distributed	Mosquito Point	Deciduous Forest	8
Distributed	Mosquito Point	Mixed Forest	1
Distributed	Mosquito Point	Woody Wetlands	1
Distributed	Tick Plot	Deciduous Forest	4
Distributed	Tick Plot	Mixed Forest	1
Distributed	Tick Plot	Woody Wetlands	1
Tower	Base Plot	NA	17
Tower	Phenology Plot	NA	2

Note: NLCD land cover classes are not used to stratify Tower Plots.

Table 24: Number of Distributed Base plots per NLCD land cover class per protocol at TREE.

Plot Type	Plot Subtype	NLCD Class	Protocols	Number of Plots
Distributed	Base Plot	Deciduous Forest	Beetles	8
Distributed	Base Plot	Mixed Forest	Beetles	1
Distributed	Base Plot	Woody Wetlands	Beetles	1
Distributed	Base Plot	Deciduous Forest	Canopy Foliage Chemistry	5
Distributed	Base Plot	Mixed Forest	Canopy Foliage Chemistry	1
Distributed	Base Plot	Deciduous Forest	Coarse Downed Wood	16
Distributed	Base Plot	Mixed Forest	Coarse Downed Wood	2
Distributed	Base Plot	Woody Wetlands	Coarse Downed Wood	2
Distributed	Base Plot	Deciduous Forest	Digital Hemispherical Photos for Leaf Area Index	16

Plot Type	Plot Subtype	NLCD Class	Protocols	Number of Plots
Distributed	Base Plot	Mixed Forest	Digital Hemispherical Photos for Leaf Area Index	2
Distributed	Base Plot	Woody Wetlands	Digital Hemispherical Photos for Leaf Area Index	2
Distributed	Base Plot	Deciduous Forest	Herbaceous Biomass	16
Distributed	Base Plot	Mixed Forest	Herbaceous Biomass	2
Distributed	Base Plot	Woody Wetlands	Herbaceous Biomass	2
Distributed	Base Plot	Deciduous Forest	Plant Diversity	17
Distributed	Base Plot	Mixed Forest	Plant Diversity	6
Distributed	Base Plot	Woody Wetlands	Plant Diversity	7
Distributed	Base Plot	Deciduous Forest	Soil Biogeochemistry	5
Distributed	Base Plot	Mixed Forest	Soil Biogeochemistry	1
Distributed	Base Plot	Deciduous Forest	Soil Microbes	5
Distributed	Base Plot	Mixed Forest	Soil Microbes	1
Distributed	Base Plot	Deciduous Forest	Vegetation Structure	16
Distributed	Base Plot	Mixed Forest	Vegetation Structure	2
Distributed	Base Plot	Woody Wetlands	Vegetation Structure	2

Note: Distributed Base Plots typically support more than one TOS protocol; ‘Number of Plots’ cannot be added to get total TOS Distributed Base Plot number.

Table 25: Number of Tower Plots per protocol at TREE.

Plot Type	Plot Subtype	Protocols	Number of Plots
Tower	Base Plot	Below Ground Biomass Coring	17
Tower	Base Plot	Canopy Foliage Chemistry	4
Tower	Base Plot	Coarse Downed Wood	17
Tower	Base Plot	Digital Hemispherical Photos for Leaf Area Index	17
Tower	Base Plot	Herbaceous Biomass	17
Tower	Base Plot	Litterfall and Fine Woody Debris	17
Tower	Base Plot	Plant Diversity	3
Tower	Base Plot	Soil Biogeochemistry	4
Tower	Base Plot	Soil Microbes	4
Tower	Base Plot	Vegetation Structure	17
Tower	Phenology	Plant Phenology	2

Note: Tower Base Plots typically support more than one TOS protocol; ‘Number of Plots’ cannot be added to get total TOS Tower Base Plot number.

6.2 Belowground Biomass

6.2.1 Site-Specific Methods

Belowground biomass characterization data were collected down to a depth of 200 cm by NEON staff in June 2015. Since the NEON protocol for long-term, operational sampling of belowground biomass only collects data to a depth of 30 cm, the belowground biomass site characterization data are critical for scaling belowground biomass measurements to greater depths; see the TOS Science Design for Plant Biomass, Productivity, and Leaf Area Index (AD[7]) for more information. Samples were collected following the standard methods outlined in TOS Site Characterization Methods (RD[6]). Roots were sorted to two diameter size categories (≤ 4 mm and 4-30 mm) and by root status (live or dead). The tables below summarize all the belowground biomass less than or equal to 30 mm diameter; size class data and more information can be found by searching the NEON data portal for the data product numbers in Appendix A.

6.2.2 Results

Table 26: Fine root mass per depth increment (cm) at TREE.

Upper Depth	Lower Depth	Mean (mg per cm ³)	Std Dev
0	10	22.49	2.17
10	20	8.04	3.35
20	30	4.01	1.13
30	40	1.57	1.01
40	50	1.36	1.13
50	60	0.93	1.36
60	70	0.41	0.33
70	80	0.29	0.15
80	90	0.04	0.02
90	100	0.01	0.01
100	120	0.08	0.13
120	140	0.04	0.07
140	160	0.02	0.03
160	180	0.4	0.05
180	200	0.05	0.07

Table 27: Cumulative fine root mass as a function of depth (cm) at TREE.

Upper Depth	Lower Depth	Mean Cumulative (g per m²)	Cumulative Std Dev
0	10	2248.63	217.33
10	20	3052.47	547.94
20	30	3453.82	619.24
30	40	3610.65	705.34
40	50	3746.55	817.97
50	60	3839.66	926.39
60	70	3880.41	941.26
70	80	3909.73	932
80	90	3913.44	931
90	100	3914.69	932.21
100	120	3929.92	951.62
120	140	3938.19	961.32
140	160	3941.9	965.98
160	180	4021.48	959.63
180	200	4031.47	970.99

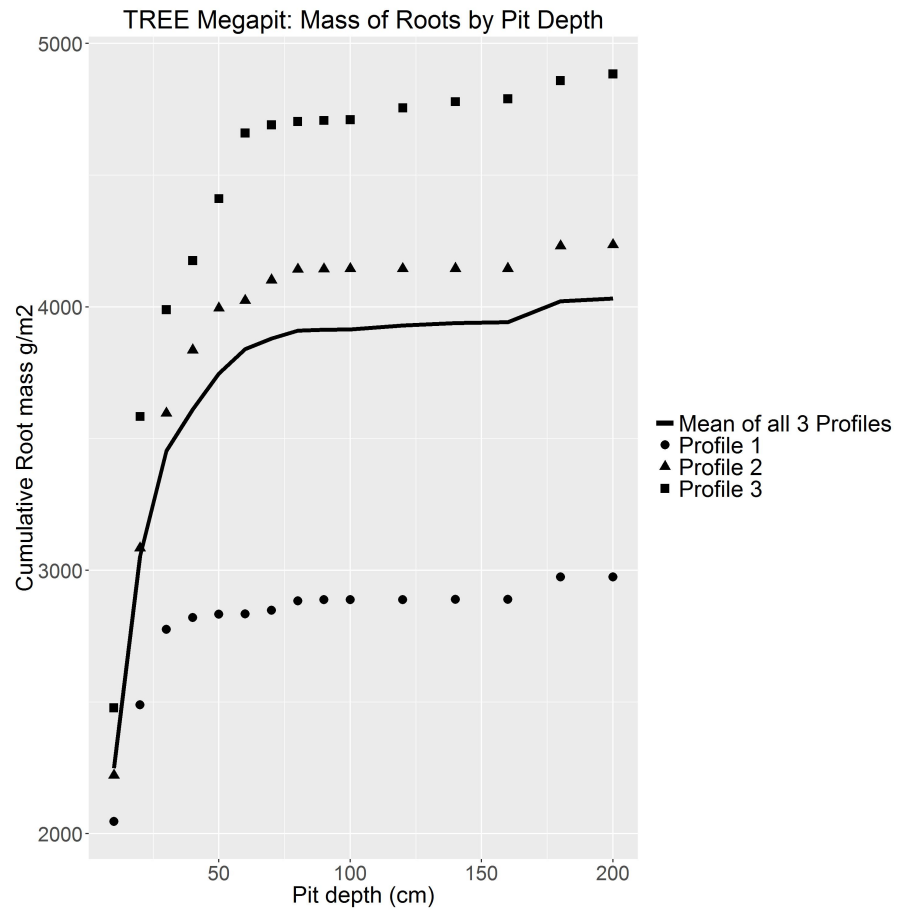


Figure 12: Cumulative root mass by pit depth at TREE.

Table 28: Fine root biomass sampling summary data at TREE.

Total Pit Depth (cm)	200
Total Cumulative Mass at 30cm (g per m ²)	3453.82
Total Cumulative Mass at 100cm (g per m ²)	3914.69
Total Cumulative Mass (g per m ²)	4031.47

6.3 Plant Characterization and Phenology Species Selection

6.3.1 Site-Specific Methods

Plant characterization data were collected by NEON staff during the summer of June 2013 following the standard methods outlined in TOS Site Characterization Methods (RD[6]). For more information on this protocol and data product numbers see Appendix A.

6.3.2 Results

Table 29: Site plant characterization and phenology species summary at TREE.

Taxon ID	Scientific Name	Rank	Mean Percent Cover	Mean Canopy Area per m ²	Mean ABH (cm ² per m ²)
ACSA3	<i>Acer saccharum</i> Marshall	1	1	NA	6.51
ACRU	<i>Acer rubrum</i> L.	2	1	0.015	4.67
ALINR	<i>Alnus incana</i> (L.) Moench ssp. <i>rugosa</i> (Du Roi) R.T. Clausen	3	<1	0.062	0.07
ABBA	<i>Abies balsamea</i> (L.) Mill.	4	2	NA	1.95
CAPE6	<i>Carex pensylvanica</i> Lam.	5	9	NA	NA
PIGL	<i>Picea glauca</i> (Moench) Voss	6	<1	NA	1.12
TSCA	<i>Tsuga canadensis</i> (L.) Carrière	7	<1	NA	1.25
ILVE	<i>Ilex verticillata</i> (L.) A. Gray	8	<1	0.029	0.02
POTR5	<i>Populus tremuloides</i> Michx.	10	<1	0.009	0.38
LALA	<i>Larix laricina</i> (Du Roi) K. Koch	11	NA	NA	0.61
PIMA	<i>Picea mariana</i> (Mill.) Britton, Sterns & Poggenb.	12	<1	NA	0.57
FRPE	<i>Fraxinus pennsylvanica</i> Marshall	13	<1	0	0.53
PIST	<i>Pinus strobus</i> L.	14	<1	NA	0.41
TIAM	<i>Tilia americana</i> L.	15	<1	NA	0.37
PIRE	<i>Pinus resinosa</i> Aiton	16	NA	NA	0.36
ILMU	<i>Ilex mucronata</i> (L.) Powell, Savolainen & Andrews	17	<1	0.011	NA
PTAQ	<i>Pteridium aquilinum</i> (L.) Kuhn	18	2	NA	NA
OSVI	<i>Ostrya virginiana</i> (Mill.) K. Koch	19	<1	0.003	0.23
MACA4	<i>Maianthemum canadense</i> Desf.	20	1	NA	NA
FRNI	<i>Fraxinus nigra</i> Marshall	21	<1	NA	0.22

Taxon ID	Scientific Name	Rank	Mean Percent Cover	Mean Canopy Area per m ²	Mean ABH (cm ² per m ²)
BEPA	<i>Betula papyrifera</i> Marshall	22	NA	NA	0.22
COCA13	<i>Cornus canadensis</i> L.	23	<1	NA	NA
TRBO2	<i>Trientalis borealis</i> Raf.	24	<1	NA	NA
VAMY	<i>Vaccinium myrtilloides</i> Michx.	25	<1	NA	NA
ORAS	<i>Oryzopsis asperifolia</i> Michx.	26	<1	NA	NA
OSCL2	<i>Osmunda claytoniana</i> L.	27	<1	NA	NA
DRCA11	<i>Dryopteris carthusiana</i> (Vill.) H.P. Fuchs	28	<1	NA	NA
RUPU	<i>Rubus pubescens</i> Raf.	28	<1	NA	NA
COCO6	<i>Corylus cornuta</i> Marshall	31	<1	0	NA
ANQU	<i>Anemone quinquefolia</i> L.	32	<1	NA	NA
BEAL2	<i>Betula alleghaniensis</i> Britton	33	<1	NA	0.08
DRIN5	<i>Dryopteris intermedia</i> (Muhl. ex Willd.) A. Gray	34	<1	NA	NA
RUAL	<i>Rubus allegheniensis</i> Porter	35	<1	NA	NA
OSCL	<i>Osmorhiza claytonii</i> (Michx.) C.B. Clarke	36	<1	NA	NA
POGR4	<i>Populus grandidentata</i> Michx.	37	NA	0	0.03
ACSA2	<i>Acer saccharinum</i> L.	38	NA	NA	0.06
CAIN12	<i>Carex intumescens</i> Rudge	39	<1	NA	NA
CABR15	<i>Carex brunnescens</i> (Pers.) Poir.	40	<1	NA	NA
DIPA9	<i>Dirca palustris</i> L.	41	NA	0	0
ONSE	<i>Onoclea sensibilis</i> L.	42	<1	NA	NA
MATR4	<i>Maianthemum trifolium</i> (L.) Sloboda	44	<1	NA	NA
RUOC	<i>Rubus occidentalis</i> L.	45	<1	NA	NA
CAGR2	<i>Carex gracillima</i> Schwein.	46	<1	NA	NA
RUID	<i>Rubus idaeus</i> L.	47	<1	NA	NA

Taxon ID	Scientific Name	Rank	Mean Percent Cover	Mean Canopy Area per m ²	Mean ABH (cm ² per m ²)
CAAR3	<i>Carex arctata</i> Boott ex Hook.	48	<1	NA	NA
CAREX	<i>Carex</i> sp.	48	<1	NA	NA
IMCA	<i>Impatiens capensis</i> Meerb.	48	<1	NA	NA
RHAL	<i>Rhamnus alnifolia</i> L'Hér.	51	<1	NA	NA
ARNU2	<i>Aralia nudicaulis</i> L.	53	<1	NA	NA
COTR2	<i>Coptis trifolia</i> (L.) Salisb.	54	<1	NA	NA
LUAC	<i>Luzula acuminata</i> Raf.	55	<1	NA	NA
POCI	<i>Polygonum cilinode</i> Michx.	55	<1	NA	NA
PHCO24	<i>Phegopteris connectilis</i> (Michx.) Watt	57	<1	NA	NA
BRAR9	<i>Brachyelytrum aristosum</i> (Michx.) Trel.	58	<1	NA	NA
LONIC	<i>Lonicera</i> sp.	58	<1	NA	NA
DOUM2	<i>Doellingeria umbellata</i> (Mill.) Nees	60	<1	NA	NA
VEOF2	<i>Veronica officinalis</i> L.	61	<1	NA	NA
MIRE	<i>Mitchella repens</i> L.	62	<1	NA	NA
OSCI	<i>Osmunda cinnamomea</i> L.	62	<1	NA	NA
OXMO	<i>Oxalis montana</i> Raf.	64	<1	NA	NA
ATFI	<i>Athyrium filix-femina</i> (L.) Roth	65	<1	NA	NA
LYAN2	<i>Lycopodium annotinum</i> L.	66	<1	NA	NA
LYDE	<i>Lycopodium dendroideum</i> Michx.	66	<1	NA	NA
FRVI	<i>Fragaria virginiana</i> Duchesne	68	<1	NA	NA
TRPR2	<i>Trifolium pratense</i> L.	69	<1	NA	NA
PRSE2	<i>Prunus serotina</i> Ehrh.	70	<1	NA	0
CLBO3	<i>Clintonia borealis</i> (Aiton) Raf.	71	<1	NA	NA
PYEL	<i>Pyrola elliptica</i> Nutt.	71	<1	NA	NA

Taxon ID	Scientific Name	Rank	Mean Percent Cover	Mean Canopy Area per m ²	Mean ABH (cm ² per m ²)
ARTR	<i>Arisaema triphyllum</i> (L.) Schott	73	<1	NA	NA
BRER2	<i>Brachyelytrum erectum</i> (Schreb. ex Spreng.) P. Beauv.	73	<1	NA	NA
CATR10	<i>Carex trisperma</i> Dewey	75	<1	NA	NA
GATR3	<i>Galium triflorum</i> Michx.	75	<1	NA	NA
SOLID	<i>Solidago</i> sp.	75	<1	NA	NA
VIOLACSP	Violaceae sp.	78	<1	NA	NA
CACA18	<i>Carpinus caroliniana</i> Walter	79	NA	NA	0.01
AMELA	<i>Amelanchier</i> sp.	80	<1	NA	NA
COPE80	<i>Comptonia peregrina</i> (L.) J.M. Coult.	81	<1	NA	NA
CACR6	<i>Carex crinita</i> Lam.	82	<1	NA	NA
CAST5	<i>Carex stipata</i> Muhl. ex Willd.	82	<1	NA	NA
HENOO	<i>Hepatica nobilis</i> Schreb. var. <i>obtusa</i> (Pursh) Steyerl.	82	<1	NA	NA
OSRE	<i>Osmunda regalis</i> L.	82	<1	NA	NA
SCPU	<i>Schizachne purpurascens</i> (Torr.) Swallen	82	<1	NA	NA
EQFL	<i>Equisetum fluviatile</i> L.	87	<1	NA	NA
HIAU	<i>Hieracium aurantiacum</i> L.	87	<1	NA	NA
POPR	<i>Poa pratensis</i> L.	87	<1	NA	NA
TAOFO	<i>Taraxacum officinale</i> F.H. Wigg. ssp. <i>officinale</i>	87	<1	NA	NA
OXDI2	<i>Oxalis dillenii</i> Jacq.	91	<1	NA	NA
SCMI2	<i>Scirpus microcarpus</i> J. Presl & C. Presl	91	<1	NA	NA
SOAM3	<i>Sorbus americana</i> Marshall	91	<1	NA	NA
TRGR4	<i>Trillium grandiflorum</i> (Michx.) Salisb.	91	<1	NA	NA

Taxon ID	Scientific Name	Rank	Mean Percent Cover	Mean Canopy Area per m ²	Mean ABH (cm ² per m ²)
CADE9	<i>Carex deweyana</i> Schwein.	95	<1	NA	NA
CHFAF	<i>Chamaecrista fasciculata</i> (Michx.) Greene var. <i>fasciculata</i>	95	<1	NA	NA
EQPA	<i>Equisetum palustre</i> L.	95	<1	NA	NA
LEGR	<i>Ledum groenlandicum</i> Oeder	95	<1	NA	NA
CAPR9	<i>Carex projecta</i> Mack.	99	<1	NA	NA
LILIUSPP	<i>Lilium</i> sp.	99	<1	NA	NA
PRVU	<i>Prunella vulgaris</i> L.	99	<1	NA	NA
EQSY	<i>Equisetum sylvaticum</i> L.	102	<1	NA	NA
2PLANT	Unknown plant	103	<1	NA	NA
ACMI2	<i>Achillea millefolium</i> L.	103	<1	NA	NA
CACA4	<i>Calamagrostis canadensis</i> (Michx.) P. Beauv.	103	<1	NA	NA
CALE10	<i>Carex leptalea</i> Wahlenb.	103	<1	NA	NA
CASC11	<i>Carex scoparia</i> Schkuhr ex Willd.	103	<1	NA	NA
CILA2	<i>Cinna latifolia</i> (Trevis. ex Goebb.) Griseb.	103	<1	NA	NA
COAL2	<i>Cornus alternifolia</i> L. f.	103	<1	NA	NA
EUMA27	<i>Eurybia macrophylla</i> (L.) Cass.	103	<1	NA	NA
LYUN	<i>Lycopus uniflorus</i> Michx.	103	<1	NA	NA
POPU4	<i>Polygonatum pubescens</i> (Willd.) Pursh	103	<1	NA	NA
PRVI	<i>Prunus virginiana</i> L.	103	<1	NA	NA
THOC2	<i>Thuja occidentalis</i> L.	103	<1	NA	NA
TRCE	<i>Trillium cernuum</i> L.	103	<1	NA	NA
VAMA	<i>Vaccinium macrocarpon</i> Aiton	103	<1	NA	NA
ACSP2	<i>Acer spicatum</i> Lam.	118	<1	NA	NA
RARE2	<i>Ranunculus recurvatus</i> Poir.	118	<1	NA	NA
RIBES	<i>Ribes</i> sp.	118	<1	NA	NA

Taxon ID	Scientific Name	Rank	Mean Percent Cover	Mean Canopy Area per m ²	Mean ABH (cm ² per m ²)
ACRU2	<i>Actaea rubra</i> (Aiton) Willd.	121	<1	NA	NA
AQVU	<i>Aquilegia vulgaris</i> L.	121	<1	NA	NA
CACO7	<i>Carex communis</i> L.H. Bailey	121	<1	NA	NA
CAEC	<i>Carex echinata</i> Murray	121	<1	NA	NA
CAGR6	<i>Carex grayi</i> × <i>intumescens</i> [unnamed hybrid]	121	<1	NA	NA
CAPA	<i>Calla palustris</i> L.	121	<1	NA	NA
CAPA5	<i>Caltha palustris</i> L.	121	<1	NA	NA
COTR18	<i>Corallorhiza trifida</i> Chatelain	121	<1	NA	NA
FESU3	<i>Festuca subverticillata</i> (Pers.) Alexeev	121	<1	NA	NA
GYDR	<i>Gymnocarpium dryopteris</i> (L.) Newman	121	<1	NA	NA
HICA10	<i>Hieracium caespitosum</i> Dumort.	121	<1	NA	NA
MARA7	<i>Maianthemum racemosum</i> (L.) Link	121	<1	NA	NA
POA	<i>Poa</i> sp.	121	<1	NA	NA
POACEA	Poaceae sp.	121	<1	NA	NA
POAR6	<i>Polygonum arifolium</i> L.	121	<1	NA	NA
POBI2	<i>Polygonatum biflorum</i> (Walter) Elliott	121	<1	NA	NA
ACTAE	<i>Actaea</i> sp.	137	<1	NA	NA
CACA11	<i>Carex canescens</i> L.	137	<1	NA	NA
CAREXSPP	<i>Carex</i> sp.	137	<1	NA	NA
CEFO2	<i>Cerastium fontanum</i> Baumg.	137	<1	NA	NA
CHCA2	<i>Chamaedaphne calyculata</i> (L.) Moench	137	<1	NA	NA
FRAXI	<i>Fraxinus</i> sp.	137	<1	NA	NA
FRVE	<i>Fragaria vesca</i> L.	137	<1	NA	NA

Taxon ID	Scientific Name	Rank	Mean Percent Cover	Mean Canopy Area per m ²	Mean ABH (cm ² per m ²)
GATR2	<i>Galium trifidum</i> L.	137	<1	NA	NA
JUEF	<i>Juncus effusus</i> L.	137	<1	NA	NA
POPA5	<i>Polygala paucifolia</i> Willd.	137	<1	NA	NA
POPR5	<i>Potamogeton praelongus</i> Wulfen	137	<1	NA	NA
PRAL2	<i>Prenanthes alba</i> L.	137	<1	NA	NA
RAAC3	<i>Ranunculus acris</i> L.	137	<1	NA	NA
SCLA2	<i>Scutellaria lateriflora</i> L.	137	<1	NA	NA
ULTH	<i>Ulmus thomasii</i> Sarg.	137	<1	NA	NA
VACCI	<i>Vaccinium</i> sp.	137	<1	NA	NA
VEOF	<i>Verbena officinalis</i> L.	137	<1	NA	NA
VIBUR	<i>Viburnum</i> sp.	137	<1	NA	NA

Note: Mean canopy area is collected for shrubs. Mean area at breast height (ABH) is collected for trees. Taxon IDs and scientific names are based on the USDA Plants database (plants.usda.gov).

Table 30: Per plot breakdown of species richness, diversity, and herbaceous cover at TREE.

Plot ID	Species Richness	Shannon Diversity Index	Percent Total Herbaceous Cover
TREE_025	32	3.1	48
TREE_039	31	3.01	54
TREE_040	22	2.32	50
TREE_041	26	2.19	82
TREE_042	18	1.91	42
TREE_043	39	2.87	102
TREE_044	27	2.96	73
TREE_045	32	3.01	88
TREE_046	20	2.16	56
TREE_047	22	1.89	105
TREE_048	23	2.01	101
TREE_049	17	2.34	119
TREE_050	33	2.61	90
TREE_051	35	2.74	82
TREE_052	43	2.85	98

<i>Title:</i> TOS Site Characterization Report: Domain 05		<i>Date:</i> 01/23/2017
<i>NEON Doc. #:</i> NEON.DOC.003889	<i>Author:</i> R.Krauss	<i>Revision:</i> A

Plot ID	Species Richness	Shannon Diversity Index	Percent Total Herbaceous Cover
TREE_053	26	2.51	44
TREE_054	24	2.14	73
TREE_055	30	2.11	131
TREE_056	35	2.61	102
TREE_057	28	2.5	80

Note: Percent herbaceous cover was measured by species and then added together to calculate the percent total herbaceous cover for each plot.

6.4 Beetles

6.4.1 Site-Specific Methods

Beetle site characterization was not conducted at TREE. For more information on this protocol and data product numbers see Appendix A.

6.5 Mosquitoes

6.5.1 Site-Specific Methods

Mosquito site characterization was not conducted at TREE. For more information on this protocol and data product numbers see Appendix A.

6.6 Ticks

6.6.1 Site-Specific Methods

No tick drags were conducted at TREE. For more information on this protocol and data product numbers see Appendix A.

6.7 Species Reference Lists

A review of the literature for taxonomic lists of interest for each site was conducted prior to field work. In the case of vertebrates that NEON may capture (e.g., reptiles, amphibians, small mammals), these lists were often required to secure permits. Key references identified in this effort are listed below. Species lists and associated references for small mammals and breeding landbirds can be found in the appendices of the respective protocols (RD[07], RD[08]).

Additional references from the Wisconsin Department of Natural Resources are listed in the Steigerwaldt species reference list section.

Title: TOS Site Characterization Report: Domain 05		Date: 01/23/2017
NEON Doc. #: NEON.DOC.003889	Author: R.Krauss	Revision: A

Bousquet, Y. 2012. Catalogue of Geadephaga (Coleoptera, Adephaga) of America, north of Mexico. ZooKeys, (245), 1-1722.

Bresee, M.K., J. Le Moine, S. Mather, K.D. Brososke, J. Chen, T.R. Crow, and J. Rademacher, 2004. Disturbance and landscape dynamics in the Chequamegon National Forest, Wisconsin, USA, from 1972 to 2001, Landscape Ecology, 19 (1), 291-309.

Brososke, K.D., J. Chen, and T.R. Crow, 2001. Understory Vegetation and Site Factors: Implications for a Managed Wisconsin Landscape, Forest Ecology and Management, 146, 75-87.

Centers for Disease Control and Prevention. (2015). *Geographic distribution of ticks that bite humans*. Retrieved from http://www.cdc.gov/ticks/geographic_distribution.html

Darsie Jr., R. F., and R. A. Ward. 2005. Identification and geographical distribution of the mosquitoes of North America, North of Mexico. University Press of Florida, Gainesville.

7 REFERENCES

Fry, J., Xian, G., Jin, S., Dewitz, J., Homer, C., Yang, L., Barnes, C., Herold, N., and Wickham, J., 2011. Completion of the 2006 National Land Cover Database for the Conterminous United States, *PE&RS*, Vol. 77(9):858-864.

USDA, NRCS. 2016. The PLANTS Database (<http://plants.usda.gov>, 1 August 2016). National Plant Data Team, Greensboro, NC 27401-4901 USA.

8 APPENDIX A: DATA PRODUCT NUMBERS

For more information on the sampling protocols and the latest observatory data visit <http://data.neonscience.org/data-product-catalog> and search by name or code number.

Table 31: NEON data product names and descriptions.

Name	Description	Identification Code
Root sampling (megapit)	Fine root biomass in 10cm increments (first 1m depth) and 20cm increments (from 1m to 2m depth) from soil pit sampling	NEON.DOM.SITE.DP1.10066
Soil physical properties (Megapit)	Soil taxonomy, horizon names, horizon depths, as well as soil bulk density, porosity, texture (sand, silt, and clay content) in the <= 2 mm soil fraction for each soil horizon. Data were derived from a sampling location expected to be representative of the area where the Instrumented Soil Plots per site are located and were collected once during site construction. Also see distributed soil data products.	NEON.DOM.SITE.DP1.00096
Soil chemical properties (Megapit)	Total content of a range of chemical elements, pH, and electrical conductivity in the <= 2 mm soil fraction for each soil horizon. Data were derived from a sampling location expected to be representative of the area where the Instrumented Soil Plots per site are located and were collected once during site construction. Also see distributed soil data products.	NEON.DOM.SITE.DP1.00097
Woody plant vegetation structure	Structure measurements, including height, canopy diameter, and stem diameter, as well as mapped position of individual woody plants	NEON.DOM.SITE.DP1.10098
Plant presence and percent cover	Plant species presence as observed in multi-scale plots: species and associated percent cover at 1-m ² and plant species presence at 10-m ² , 100-m ² and 400-m ²	NEON.DOM.SITE.DP1.10058
Plant phenology observations	Phenophase status and intensity of tagged plants	NEON.DOM.SITE.DP1.10055

<i>Title:</i> TOS Site Characterization Report: Domain 05		<i>Date:</i> 01/23/2017
<i>NEON Doc. #:</i> NEON.DOC.003889	<i>Author:</i> R.Krauss	<i>Revision:</i> A

Name	Description	Identification Code
Plant foliar stable isotopes	Field collection metadata describing the sampling of sun-lit canopy foliar tissues for stable isotope compositions. Also includes raw data returned from the laboratory.	NEON.DOM.SITE.DP1.10053
Plant foliar physical and chemical properties	Plant sun-lit canopy foliar physical (e.g., leaf mass per area) and chemical properties reported at the level of the individual.	NEON.DOM.SITE.DP1.10026
Non-herbaceous perennial vegetation structure	Field measurements of individual non-herbaceous perennial plants (e.g. cacti, ferns)	NEON.DOM.SITE.DP1.10045.
Ground beetles sampled from pitfall traps	Taxonomically identified ground beetles and the plots and times from which they were collected.	NEON.DOM.SITE.DP1.10022
Ground beetle sequences DNA barcode	CO1 DNA sequences from select ground beetles	NEON.DOM.SITE.DP1.10020
Mosquitoes sampled from CO2traps	Taxonomically identified mosquitoes and the plots and times from which they were collected	NEON.DOM.SITE.DP1.10043
Mosquito-borne pathogen status	Presence/absence of a pathogen in a single mosquito sample (pool)	NEON.DOM.SITE.DP1.10041
Mosquito sequences DNA barcode	CO1 DNA sequences from select mosquitoes	NEON.DOM.SITE.DP1.10038
Ticks sampled using drag cloths	Abundance and density of ticks collected by drag and/or flag sampling (by species and/or lifestage)	NEON.DOM.SITE.DP1.10093
Tick-borne pathogen status	Presence/absence of a pathogen in each single tick sample	NEON.DOM.SITE.DP1.10092