



<i>Title:</i> NEON User Guide to Herbaceous clip harvest (DP1.10023.001)	<i>Date:</i> 04/26/2022
<i>Author:</i> Katherine Jones	<i>Revision:</i> G

NEON USER GUIDE TO HERBACEOUS CLIP HARVEST (DP1.10023.001)

PREPARED BY	ORGANIZATION
Katherine Jones	SCI
Courtney Meier	SCI
Dave Barnett	SCI



<i>Title:</i> NEON User Guide to Herbaceous clip harvest (DP1.10023.001)	<i>Date:</i> 04/26/2022
<i>Author:</i> Katherine Jones	<i>Revision:</i> G

CHANGE RECORD

REVISION	DATE	DESCRIPTION OF CHANGE
A	06/16/2017	Initial Release
B	11/15/2018	2018 sampling modifications described
C	10/14/2019	Additional known data quality issue described, BoutNumber described for Distributed plots
D	06/22/2020	Included general statement about usage of neonUtilities R package and statement about possible location changes
E	10/19/2020	Added Sampling Design Changes section and content
F	05/10/2021	Adjusted mechanism for generating eventID and enhanced tracking of plots not sampled according to protocol guidelines
G	04/26/2022	Updated section 4.3 Data Revision with latest information regarding data release. Updated information regarding the geoNEON package.



<i>Title:</i> NEON User Guide to Herbaceous clip harvest (DP1.10023.001)	<i>Date:</i> 04/26/2022
<i>Author:</i> Katherine Jones	<i>Revision:</i> G

TABLE OF CONTENTS

1	DESCRIPTION	1
1.1	Purpose	1
1.2	Scope	1
2	RELATED DOCUMENTS AND ACRONYMS	2
2.1	Associated Documents	2
2.2	Acronyms	2
3	DATA PRODUCT DESCRIPTION	3
3.1	Spatial Sampling Design	3
3.2	Temporal Sampling Design	6
3.3	Sampling Design Changes	7
3.4	Variables Reported	8
3.5	Spatial Resolution and Extent	9
3.6	Temporal Resolution and Extent	10
3.7	Associated Data Streams	10
3.8	Product Instances	10
3.9	Data Relationships	11
4	DATA QUALITY	11
4.1	Data Entry Constraint and Validation	11
4.2	Automated Data Processing Steps	12
4.3	Data Revision	12
4.4	Quality Flagging	13

LIST OF TABLES AND FIGURES

Table 1	Descriptions of the dataQF codes for quality flagging	13
---------	---	----



<i>Title:</i> NEON User Guide to Herbaceous clip harvest (DP1.10023.001)	<i>Date:</i> 04/26/2022
<i>Author:</i> Katherine Jones	<i>Revision:</i> G

Figure 1 A 20m x 20m (400m²) NEON plot showing potential clip harvest "cells" (dashed blue lines). Cells overlapping 10m² nested subplots are not sampled for herbaceous biomass. When grazing management is absent, one randomly selected grid cell is chosen for harvest per sampling bout. At sites managed for grazing, two grid cells are sampled per bout. The pointID (red star) is used to calculate the location in UTM of a given Clip List coordinate (red 'x'). 5

Figure 2 A 40m x 40m (1600 m²) NEON Tower plot showing clip-harvest cells within a 400 m² subplot. Cells overlapping 10m² nested subplots are not sampled for herbaceous biomass. Clip harvest samples are generated from two randomly selected subplots per sampling bout, but for clarity, cells are not shown in 3 of 4 subplots. At sites managed for grazing, two grid cells per selected subplot are sampled per bout. For each subplotID (grey numbers), the pointID at the SW corner (red stars) is used to calculate the location in UTM of a given Clip List coordinate (red 'x'). 6

Figure 3 Schematic of the applications used by field technicians to enter herbaceous biomass data 12



1 DESCRIPTION

1.1 Purpose

This document provides an overview of the data included in this NEON Level 1 data product, the quality controlled product generated from raw Level 0 data, and associated metadata. In the NEON data products framework, the raw data collected in the field, for example, the dry weights of litter functional groups from a single collection event are considered the lowest level (Level 0). Raw data that have been quality checked via the steps detailed herein, as well as simple metrics that emerge from the raw data are considered Level 1 data products.

The text herein provides a discussion of measurement theory and implementation, data product provenance, quality assurance and control methods used, and approximations and/or assumptions made during L1 data creation.

1.2 Scope

This document describes the steps needed to generate the L1 data product 'Herbaceous clip harvest' - the dry weight of annual production of herbaceous plants clipped from randomly placed clip cells in terrestrial plots - and associated metadata from input data. This document also provides details relevant to the publication of the data products via the NEON data portal, with additional detail available in the file, NEON Data Publication Workbook for TOS Herbaceous Biomass: QA/QC of Raw Field and Lab Data (DP1.10023.001) (AD[05]), provided in the download package for this data product.

This document describes the process for ingesting and performing automated quality assurance and control procedures on the data collected in the field pertaining to TOS Protocol and Procedure: Measurement of Herbaceous Biomass (AD[07]). The raw data that are processed in this document are detailed in the file, NEON Raw Data Ingest Workbook for TOS Herbaceous Biomass (DP0.10023.001) (AD[04]), provided in the download package for this data product. Please note that raw data products (denoted by 'DP0') may not always have the same numbers (e.g., '10033') as the corresponding L1 data product.



2 RELATED DOCUMENTS AND ACRONYMS

2.1 Associated Documents

AD[01]	NEON.DOC.000001	NEON Observatory Design (NOD) Requirements
AD[02]	NEON.DOC.000913	TOS Science Design for Spatial Sampling
AD[03]	NEON.DOC.002652	NEON Data Products Catalog
AD[04]	Available with data download	Validation csv
AD[05]	Available with data download	Variables csv
AD[06]	NEON.DOC.000914	TOS Science Design for Plant Biomass and Productivity
AD[07]	NEON.DOC.014037	TOS Protocol and Procedure: Measurement of Herbaceous Biomass
AD[08]	NEON.DOC.000913	TOS Science Design for Spatial Sampling
AD[09]	NEON.DOC.000913	TOS Science Design for Plant Diversity
AD[10]	NEON.DOC.000008	NEON Acronym List
AD[11]	NEON.DOC.000243	NEON Glossary of Terms
AD[12]	NEON.DOC.014037	TOS Protocol and Procedure: Measurement of Herbaceous Biomass
AD[13]	NEON.DOC.004825	NEON Algorithm Theoretical Basis Document: OS Generic Transitions
AD[14]	Available on NEON data portal	NEON Ingest Conversion Language Function Library
AD[15]	Available on NEON data portal	NEON Ingest Conversion Language
AD[16]	Available with data download	Categorical Codes csv

2.2 Acronyms

Acronym	Definition
ANPP	Aboveground Net Primary Productivity
TOS	Terrestrial Observation System



3 DATA PRODUCT DESCRIPTION

The herbaceous clip harvest data products provide mass data for herbaceous plant functional groups from individual sampling bouts. All masses reported following processing are reported at the spatial resolution of one clip strip and the temporal resolution of a single collection event (Figure 1).

Mass data for each collection event are reported to an accuracy of 0.01 grams. Masses < 0.01g are also reported and indicate presence of an identifiable sample present at masses below accuracy of the scales used to weigh samples.

For a minimum of one bout per growing season, the aboveground dry mass production associated with key herbaceous functional groups will be provided. These functional groups are defined as:

- Bryophytes for which annual production is discernable
- C3 cool-season graminoids
- C4 warm-season graminoids
- Nitrogen-fixing forbs and woody species at decimeter height < 1 cm
- Non-leguminous forbs
- Woody-stemmed shrubs with diameter at decimeter height < 1 cm

All data products include spatial and temporal sampling details, as well as required metadata. For additional information on the sampling design and the associated protocol, see TOS Science Design for Plant Biomass, Productivity, and Leaf Area Index (AD[06]), and the TOS Field and Lab Protocol for Herbaceous Plant Biomass (AD[07]). Following data collection in the field and the lab, several standard QA/QC procedures are implemented, as described in Section 5 of this document, in order to produce quality-checked Level 1 herbaceous clip harvest data products.

Herbaceous clip harvest data may be used to estimate annual Aboveground Net Primary Productivity (ANPP) and aboveground biomass at plot, site, and continental scales. They also provide essential data for understanding vegetative carbon fluxes over time.

3.1 Spatial Sampling Design

The Herbaceous Clip Harvest sampling is implemented in Tower plots at all terrestrial NEON sites and Distributed plots at terrestrial NEON sites with non-forest, herbaceous dominated, National Land Cover Database (NLCD) Classification. Sampling occurs at a subset of Tower plots at some sites and at all Tower plots at others, and in a maximum of twenty randomly selected Distributed plots, with $\geq 50\%$ herbaceous plant cover, per site. In Distributed plots, the maximum potential sampling effort ($n=20$ plots) corresponds to sampling in $\frac{1}{2}$ to $\frac{3}{4}$ of the established Distributed plots per site. The Distributed plots at which the herbaceous clip harvest protocol is performed are chosen according to a spatially balanced, stratified-random design in order to create an unbiased estimate of herbaceous biomass at the site scale (see AD[08] for details).

In forest, grassland, and rangeland systems, for both plot types, the clip harvest is performed in 0.1 m x 2 m clip strips that exist within 0.5 m x 3 m gridded clip “cells” (Figure 1 and Figure 2). For typical sampling bouts, one gridded clip-area “cell” is randomly chosen per 400 m² plot or subplot. However, at sites

managed for grazing, an additional grid cell is placed within a grazing enclosure, resulting in two clip-strips harvested per sampling bout. Grid cells that overlap with 25m² nested subplots (used for seedling and sapling counts) may be used for clip harvests, but those that overlap with 1m² and 10m² nested subplots (used for diversity sampling) are never clipped. This ensures that generation of herbaceous plant productivity data minimally affects the quality of plant diversity data. See TOS Science Design for Plant Biomass and Productivity (AD[06]), TOS Protocol and Procedure: Measurement of Herbaceous Biomass (AD[07]), TOS Science Design for Spatial Sampling (AD[08]) and TOS Science Design for Plant Diversity (AD[09]) for further details.

Placement of clip strips is random and utilizes the randomized list of grid cell locations being utilized for herbaceous clip harvest (AD[12]). This is an ordered list of all available sampling locations within a given plot, from which a **clipCell** is removed after being utilized for sampling in any one of the three sampling protocols. Removal precludes consideration of a **clipCell** for future sampling under all protocols.

Clip strip dimensions and orientation at agricultural sites differs from clip strips at non-agricultural sites. In all agricultural systems, clip strips are oriented perpendicular to crop rows. Plots planted with barley and wheat utilize clip strips that are 2.0 m x 0.5 m; plots planted with corn, sorghum and soybeans clip biomass within 1.5 m x 0.65 m clip strips consistent with Long-Term Agroecosystem Research (LTAR) protocols.

As much as possible, sampling occurs in the same locations over the lifetime of the Observatory. However, over time some sampling locations may become impossible to sample, due to disturbance or other local changes. When this occurs, the location and its location ID are retired. A location may also shift to slightly different coordinates. Refer to the locations endpoint of the NEON API for details about locations that have been moved or retired: <https://data.neonscience.org/data-api/endpoints/locations/>

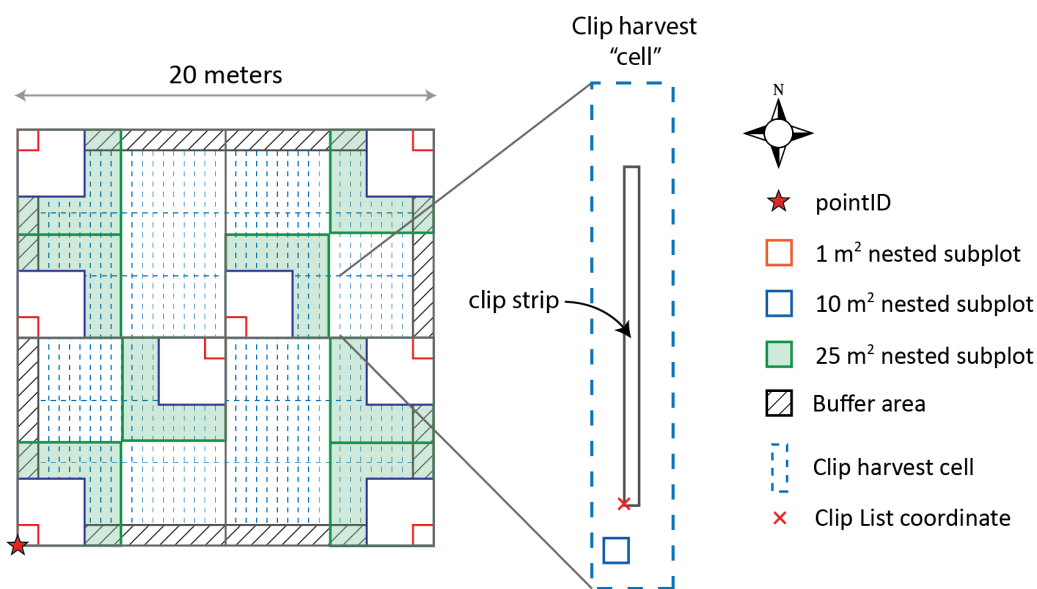


Figure 1: A 20m x 20m (400m²) NEON plot showing potential clip harvest "cells" (dashed blue lines). Cells overlapping 10m² nested subplots are not sampled for herbaceous biomass. When grazing management is absent, one randomly selected grid cell is chosen for harvest per sampling bout. At sites managed for grazing, two grid cells are sampled per bout. The pointID (red star) is used to calculate the location in UTM of a given Clip List coordinate (red 'x').

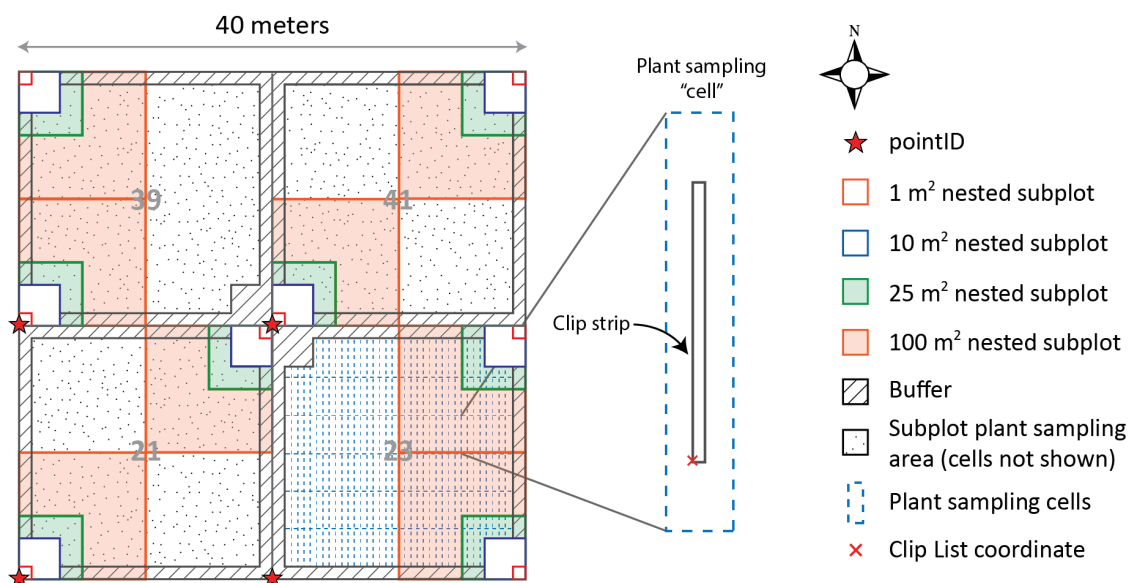


Figure 2: A 40m x 40m (1600 m²) NEON Tower plot showing clip-harvest cells within a 400 m² subplot. Cells overlapping 10m² nested subplots are not sampled for herbaceous biomass. Clip harvest samples are generated from two randomly selected subplots per sampling bout, but for clarity, cells are not shown in 3 of 4 subplots. At sites managed for grazing, two grid cells per selected subplot are sampled per bout. For each subplotID (grey numbers), the pointID at the SW corner (red stars) is used to calculate the location in UTM of a given Clip List coordinate (red 'x').

3.2 Temporal Sampling Design

NEON field and lab technicians will generate the herbaceous clip harvest data product at least once per growing season for each site. However, the temporal sampling resolution depends on plot type. Distributed plots are sampled at five year intervals at each site. In a site sampling year, Distributed plots are harvested once per growing season except for agriculture sites, which can be harvested more frequently when multiple crops are planted in a single growing season. The default sampling frequency for Tower plots is once per year, but the following factors may result in additional sampling bouts per growing season, and hence additional instances of the data product, and are assessed on a per site basis:

- Sites with distinct early-season (C3 plants) and late-season biomass peaks (C4 plants) are clip-harvested twice per growing season.
- Sites actively managed for grazing are clip-harvested every 4 or 8 weeks depending on the compensatory response of species present.
- Sites with continuous growth and decomposition (e.g., tropical and sub-tropical grasslands) are harvested more frequently than sites with periods of senescence.

Within a sampling season, herbaceous clip harvests are scheduled at phenologically consistent times across sites to allow for data comparability across the Observatory and through time. To determine phenologically consistent sampling dates across widely different ecosystems, the TOS utilizes MODIS-EVI



phenology data for the majority of sites (Didan 2015), and more specifically, per site averages from the most recent 10 years that are updated every 5 years. Ungrazed, wildland site herbaceous clip harvest sampling schedules correspond to the average date after which greenness begins to decrease, ensuring a high probability that all herbaceous biomass has been produced prior to clipping. For grazed sites, scheduled sampling corresponds to green-up dates, and it is assumed that cows are present from that point forward. At agriculture sites, MODIS is considered a rough guide; field staff monitor crops for senescence and begin clipping after the first leaves begin to dry or yellow, and work with sites to ensure clipping occurs before crops are harvested.

Clip harvest events and the resulting herbaceous biomass values can be grouped by bout according to a unique eventID. The eventID is comprised of HBP (the data product code), year, site code, and an integer - the International Organization for Standardization (ISO) week date in which the sampling bout began.

3.3 Sampling Design Changes

Several design changes have been implemented over the course of data collection. Such changes arise due to continual evaluation of the sampling design for best practices in collaboration with external technical working groups. Design changes also occur when optimization is necessary to ensure that allocation of sampling effort is poised to maximize returns to the scientific community.

- Prior to 2018: Distributed plots were sampled at three-year intervals. Subsequent sampling at five-year intervals coincides with other plant biomass and productivity data products at each site.
- Prior to 2018: All Tower plots were sampled during each sampling bout at each site.
- Prior to 2018: The Tower plot intra-annual sampling at grazed sites occurred every four weeks during the growing season.
- Prior to 2018: At select grazed sites, those bouts not associated with peak biomass during which samples are not sorted by functional group, the complete clip strip was collected and weighed. For the 2018 and subsequent sampling years a subsample of the plot-specific clip harvest is dried and weighed, but data-driven estimates of the entire sample mass are reported.
- Prior to 2019: Samples were sorted into functional groups that included the category 'Leguminous Forbs (LFB)'. Subsequent sampling places leguminous forbs and nitrogen fixers < 1 cm DBH into a 'N-fixer (NFX)' functional group category.
- 2020: The field **samplingImpractical** was added to the data to allow for the generation of a record when a plot could not be sampled or a sample could not be dried for a particular bout and year. If field sampling was not possible **samplingImpractical** is populated with a value other than 'OK' (e.g., 'location flooded') in the hbp_perbout table, no sample is collected, and no record is generated in the hbp_massdata table. If a sample is collected but not dried or weighed, **samplingImpractical** is populated with a value other than 'OK' in the hbp_massdata table and no mass data are available for that sample.



Title: NEON User Guide to Herbaceous clip harvest (DP1.10023.001)	Date: 04/26/2022
Author: Katherine Jones	Revision: G

- 2020: The field **biophysicalCriteria** was added to the data to account for instances when sampling occurred but conditions were not optimal. If conditions were suboptimal - the sample was not collected during peak biomass - the field **biophysicalCriteria** is populated with a value other than 'OK - no known exceptions' (e.g., 'conditions not met: most plants not yet flowering') but the sample is collected and mass data are generated.
- Prior to 2021: The bout number for each clipping event within a site was assigned a number. Sampling at Tower plots began with bout = 1 and continued with ordered numeric increments for each sampling event at each site within a sampling year. Bout number = 0 was assigned to Distributed plots that are typically harvested only once per season for biomass stocks. This means that agriculture sites where different Distributed Plots may be harvested at different times all have boutNumber = 0, regardless of clipDate.
- Prior to 2021: The eventID was comprised of HBP, year, site code, and the bout number.
- May of 2021: The data were structured such that records were created when sampling at possible and scheduled plots did not occur. Such instances include:

-Distributed plots in forested NLCD types. The field **targetTaxaPresent** is set to 'No', and the **remarks** field is populated with 'forest cover type, sampling criteria not met.'

-Distributed plots in non-forest NLCD types where the herbaceous cover < 50%. The field **targetTaxaPresent** is set to 'No', and the **remarks** field is populated with 'herbaceous cover < 50% of plot area, sampling criteria not met.'

-Grazed sites when a plot was not subjected to grazing during the interval prior to the scheduled sampling event. The field **samplingImpractical** is set to 'exclosure cell not clipped, livestock absent' or 'ambient cell not clipped, livestock absent' for the clip cell under the exclosure and exposed to grazing respectively.

3.4 Variables Reported

All variables reported from the field or laboratory technician (L0 data) are listed in the file, NEON Raw Data Ingest Workbook for TOS Herbaceous Biomass (DP0.10023.001) (AD[04]). All variables reported in the published data (L1 data) are also provided separately in the file, NEON Data Publication Workbook for TOS Herbaceous Biomass: QA/QC of Raw Field and Lab Data (DP1.10023.001) (AD[05]).

Field names have been standardized with Darwin Core terms (<http://rs.tdwg.org/dwc/>; accessed 16 February 2014), the Global Biodiversity Information Facility vocabularies (<http://rs.gbif.org/vocabulary/gbif/>; accessed 16 February 2014), the VegCore data dictionary (<https://projects.nceas.ucsb.edu/nceas/projects/bien/wiki/VegCore>; accessed 16 February 2014), where applicable. NEON TOS spatial data employs the World Geodetic System 1984 (WGS84) for its fundamental reference datum and GEOID09 for its reference gravitational ellipsoid. Latitudes and longitudes are denoted in decimal notation to six decimal places, with longitudes indicated as negative west of the Greenwich meridian.

Some variables described in this document may be for NEON internal use only and will not appear in downloaded data.



3.5 Spatial Resolution and Extent

The overall spatial hierarchy of the herbaceous clip harvest data product is subtly different for Tower plots compared to Distributed plots. For Tower plots that are 40 m x 40 m and larger, the gridded clip harvest locations exist within subplotIDs within each plotID (Figure 2):

Tower plots ($\geq 1600\text{m}^2$): clipID \rightarrow subplotID \rightarrow plotID \rightarrow habitat (NLCD veg class) \rightarrow siteID \rightarrow domainID

All other plots: clipID \rightarrow plotID \rightarrow habitat \rightarrow siteID \rightarrow domainID

The basic spatial data included in the data download include the latitude, longitude, and elevation of the centroid of the plot where sampling occurred + associated uncertainty due to GPS error and plot width. Shapefiles of all NEON TOS sampling locations can be found in the Document Library: <http://data.neonscience.org/documents>.

To derive a more precise estimate of the location of each trap, there are two options:

1. Use the getLocTOS function from the geoNEON package, available here: <https://github.com/NEONScience/NEON-geolocation>
2. Or follow these steps to perform the same calculation:
 - a. The namedLocation field in the data is the named location of the plot; more precise geographic data require the named location of the subplot. Construct the named location of the subplot of each record in hbp_perbout by concatenating the fields for namedLocation and subplotID as: namedLocation + ' ' + subplotID, e.g. subplotID '41' of namedLocation 'HARV_052.basePlot.hbp' has a complete named location of 'HARV_052.basePlot.hbp.41'.
 - b. Use the API (<http://data.neonscience.org/data-api>; e.g. http://data.neonscience.org/api/v0/locations/HARV_052.basePlot.hbp.41) to query for elevation("locationElevation"), easting("locationUtmEasting"), northing("locationUtmNorthing"), coordinateUncertainty ("Value for Coordinate uncertainty"), elevationUncertainty ("Value for Elevation uncertainty"), and utmZone ("locationUtmZone") as inputs to the next step.
 - c. Calculate the clipCellNumber of each trap (last 3 digits of clipID).
 - d. Use the clip cell lookup table, available here: http://data.neonscience.org/api/v0/documents/clipCellNumber_lookup (clicking on link will initiate download), to find the offsets for each clipCellNumber and subplot (=pointID), and use the offsets to adjust the UTM values downloaded in step 2.
 - e. Increase coordinateUncertainty by an appropriate amount to account for error introduced by navigating within plots. Technicians may shift elevated trap up to 1 meter to either the north or south within a selected clip cell to avoid obstacles. Additional error may be introduced due to tape stretching to navigate to locations within plots.



3.6 Temporal Resolution and Extent

The finest temporal resolution at which instances of the herbaceous clip harvest data product are tracked is the date of harvest, **collectDate**, for a given plot or subplot.

collectDate (date an individual strip was clipped) → **eventID** → **annual production**

The NEON Data Portal provides data in monthly files for query and download efficiency. Queries including any part of a month will return data from the entire month. Code to stack files across months is available here: <https://github.com/NEONScience/NEON-utilities>.

3.7 Associated Data Streams

Additional information about woody vegetation present in the plot, if relevant, is available in the NEON Woody Plant Vegetation Structure data product (DP1.10098.001). Users are advised to leverage data from vegetation structure to provide context to clip harvest data. Additional information about litter production in the plot is available in the NEON Litterfall and Fine Woody Debris data product (DP1.10033.001).

The herbaceous clip harvest data product is used as an input to the herbaceous production data product, the latter of which is detailed in NEON ATBD: TOS Herbaceous Biomass – Aboveground Productivity Calculations (AD[12]). Separate, additional herbaceous clip harvest sampling events are carried out to generate samples analyzed for isotopes and chemistry. The results of these analyses can be found in NEON’s plant foliar stable isotopes (NEON.DOM.SITE.DP1.10053) and plant foliar chemical properties (NEON.DOM.SITE.DP1.10051) data products.

3.8 Product Instances

There are a maximum of 2 herbaceous clip harvest bouts per year at ungrazed sites, with samples collected from no more than 40 clip strips in Tower plots and no more than 20 clip strips in Distributed plots, for a total of 60 or fewer clip strips per site. Each clip yields 1-5 herb group samples. No ungrazed site should ever exceed 500 data product instances in a single calendar year.

At grazed sites, Tower plots are sampled no more than 8 times per year. There are 2 clip strips per plot/subplot resulting in up to 80 clip strips in Tower plots. Only 1 bout per year is sorted to herb group resulting a maximum of 960 samples generated in Tower plots. In years scheduled for sampling in Distributed plots, 20 clip strips yielding 1-5 mass samples each are also clipped. No grazed site should ever exceed 1160 data product instances in a single calendar year.

When sampling does not occur, records are generated to account for expected plots. Obstacles to sampling such as snow or management activities are reflected in the **samplingImpractical** field. Likewise, **samplingImpractical** describes instances at grazed sites when a Tower plot was not subjected to grazing during the interval prior to the sampling event and when the event is not the peak biomass sampling bout. Sampling does not occur at Distributed plots in NLCD forest types and at Distributed plots in NLCD



non-forest types where herbaceous cover is less than 50 percent. These instances are reflected in the **remarks** field and **targetTaxaPresent** is set to 'No.'

3.9 Data Relationships

A selected clipID is only ever harvested once. The unique sampleID is generated from the clipID and the collectDate. Each sampleID created in the field sampling activity, hbp_perbout, results in 1-5 child records, subsampleIDs, in the hbp_massdata table. Duplicates and/or missing data may exist where protocol and/or data entry aberrations have occurred; users should check data carefully for anomalies before joining tables.

hbp_perbout → One record expected per clipID per collectDate, producing only one instance of sampleID for all time in the hbp_perbout table

hbp_massdata → One record expected per sampleID per herbGroup, generates a single subsampleID. Duplicate instances of a single subsampleID are expected to exist where qaDryMass = 'Y'; these are samples that are reweighed for quality assurance purposes.

sampleID and the associated barcode (**sampleCode**) can be used to link the tables. The **sampleID** and **sampleCode** will be generated for each collection event, and **subsampleIDs** and **subsampleCodes** will be generated for each functional group within a sample in the hbp_massdata table. Physical samples will be discarded following measurement.

Primary key for hbp_perbout → plotID, clipID, collectDate, sampleID, sampleCode

Primary key for hbp_massdata → sampleID, sampleCode, subsampleID, subsampleCode, qaDryMass

Data downloaded from the NEON Data Portal are provided in separate data files for each site and month requested. The neonUtilities R package contains functions to merge these files across sites and months into a single file for each table described above. The neonUtilities package is available from the Comprehensive R Archive Network (CRAN; <https://cran.r-project.org/web/packages/neonUtilities/index.html>) and can be installed using the install.packages() function in R. For instructions on using neonUtilities to merge NEON data files, see the Download and Explore NEON Data tutorial on the NEON website: <https://www.neonscience.org/download-explore-neon-data>.

4 DATA QUALITY

4.1 Data Entry Constraint and Validation

Many quality control measures are implemented at the point of data entry within a mobile data entry application or web user interface (UI). For example, data formats are constrained and data values controlled through the provision of dropdown options, which reduces the number of processing steps necessary to prepare the raw data for publication. An additional set of constraints are implemented during the process of ingest into the NEON database. The product-specific data constraint and validation requirements built into data entry applications and database ingest are described in the document NEON Raw Data Ingest Workbook for TOS Herbaceous Biomass (DP0.10023.001), provided with every download of this data



product. Contained within this file is a field named 'entryValidationRulesForm', which describes syntactically the validation rules for each field built into the data entry application. Data entry constraints are described in NiCl syntax in the validation file provided with every data download, and the NiCl language is described in NEON's Ingest Conversion Language (NICL) specifications ([AD[15]]).

Data collected prior to 2017 were processed using a paper-based workflow that did not implement the full suite of quality control features associated with the interactive digital workflow.

A schematic of the data entry application design is depicted in Figure 3.

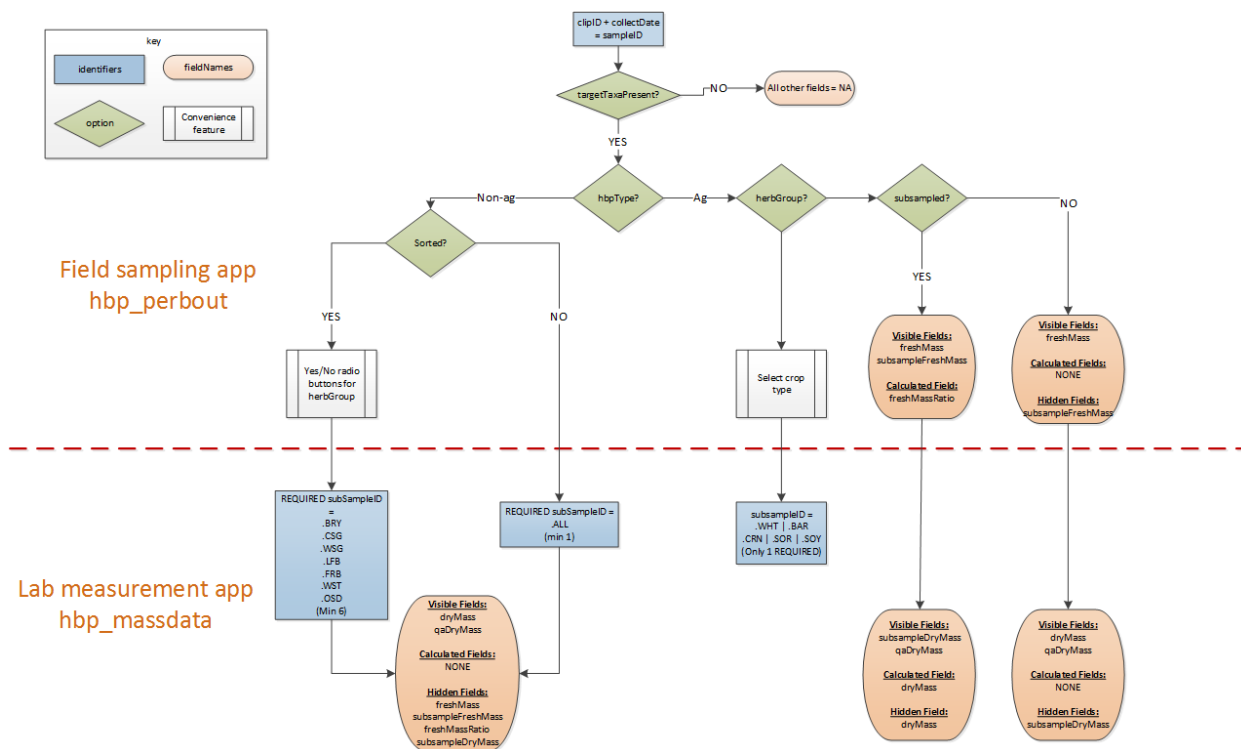


Figure 3: Schematic of the applications used by field technicians to enter herbaceous biomass data

4.2 Automated Data Processing Steps

Following data entry into a mobile application or web user interface, the steps used to process the data through to publication on the NEON Data Portal are detailed in the NEON Algorithm Theoretical Basis Document: OS Generic Transitions ([AD[13]]).

4.3 Data Revision

All data are provisional until a numbered version is released. Annually, NEON releases a static version of all or almost all data products, annotated with digital object identifiers (DOIs). The first data Release



was made in 2021. During the provisional period, QA/QC is an active process, as opposed to a discrete activity performed once, and records are updated on a rolling basis as a result of scheduled tests or feedback from data users. The Issue Log section of the data product landing page contains a history of major known errors and revisions.

4.4 Quality Flagging

The **dataQF** field in each data record is a quality flag for known errors applying to the record. Please see below for an explanation of **dataQF** codes specific to this product.

Table 1: Descriptions of the dataQF codes for quality flagging

fieldName	value	definition
dataQF	legacyData	Data recorded using a paper-based workflow that did not implement the full suite of quality control features associated with the interactive digital workflow

Additional known quality issues that are not flagged: For all records published prior to 2019-08-27, the measuredBy and recordedBy fields were populated incorrectly and may or may not be unique.

Records of land management activities, disturbances, and other incidents of ecological note that may have a potential impact are found in the Site Management and Event Reporting data product (DP1.10111.001)